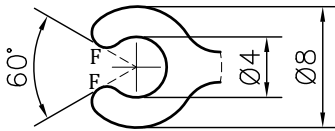
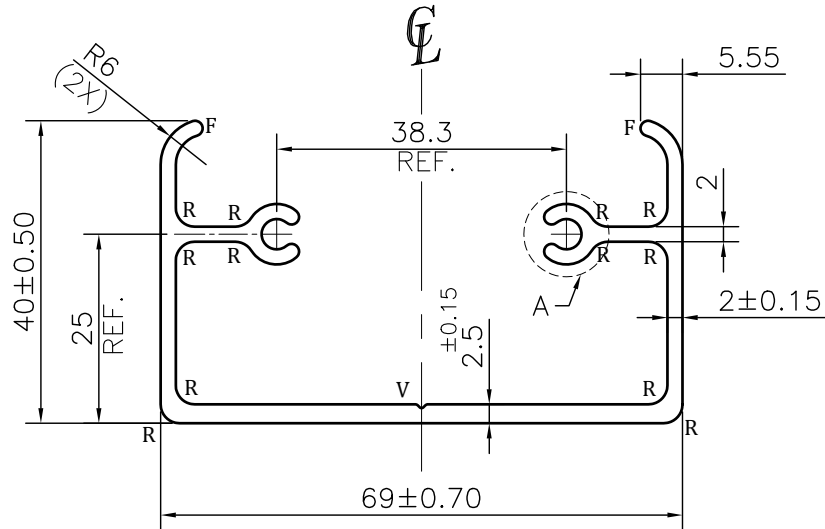


P-JAL-B-317

G101672



DETAIL A
SCALE 2:1

NOTE:-

- R= 2.50 RADIUS (10 PLACES)**
- F= FULL RADIUS (6 PLACES)**
- V= 0.50x90° V-GROOVE (1 PLACE)**

1. STRAIGHTNESS= 1.7mm/M
2. TWIST= 1.7mm/M
3. ANGULARITY= ±2°
4. FLATNESS= 0.007xWIDTH

Q00902

CONTROLLED COPY



SYMBOL OF QUALITY
AN ISO 9001 COMPANY

JINDAL ALUMINIUM LTD.
BHIWADI-301019 (INDIA)

	NAME	DATE
DRAWN	ASHUTOSH	30-08-2023
CHECKED	PARVESH	07-12-2023
APPROVED	R.G.PAREKH	07-12-2023

1. ALL DIMENSIONS ARE IN mm.
2. ROUND OFF ALL SHARP CORNERS WITH 0.40 mm.
3. TOLERANCES WILL BE AS PER BS:EN-755-9, UNLESS OTHERWISE SPECIFIED

SCALE	1:1
AREA mm ²	433.088
PERIMETER mm.	385.1
WEIGHT kg/m	1.169

PARTY'S NAME	NITSON & AMITSU PVT. LTD., NEW DELHI		DRAWING No.	P-JAL-B-317	SECTION No.	7000001833
PARTY'S DRAWING No.	AS PER DRAWING			G101672		G101672
ALLOY & TEMPER	6063 T6	PRODUCT CODE:-055				
		HSN CODE:- 76042990				
DESCRIPTION	CURTAIN WALL SECTION-CONNECTOR					