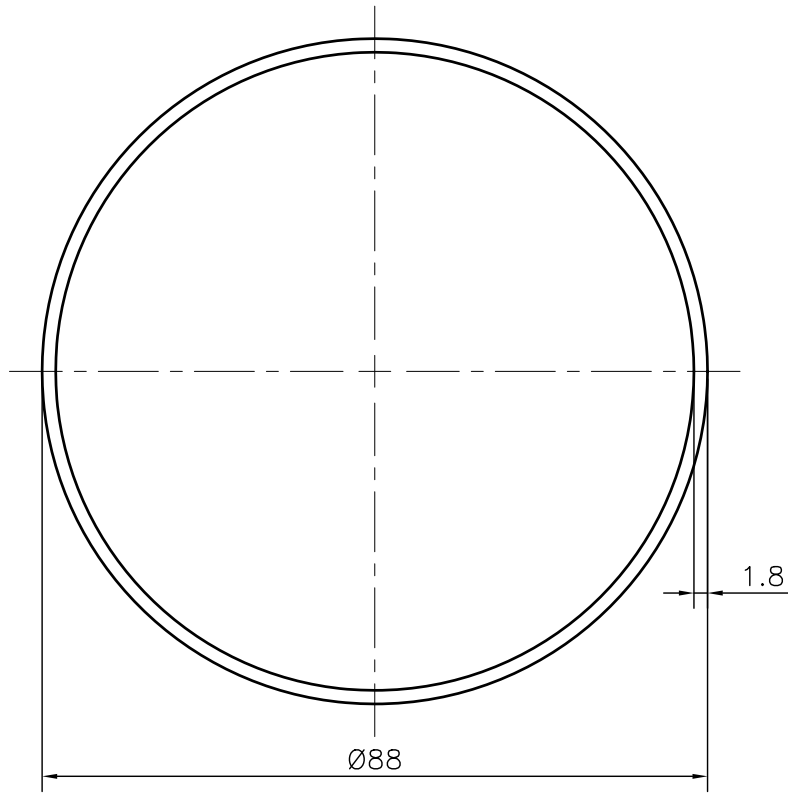


P-JAL-B-399

G101688



WEIGHT PER 12 FEET LENGTH :- 4.813 Kg  
 WEIGHT RANGE :- 4.573 Kg TO 5.055 Kg PER 12 FEET

- 1. STRAIGHTNESS= 1.7mm/M
- 2. TWIST= 1.7mm/M
- 3. ANGULARITY=  $\pm 2^\circ$
- 4. FLATNESS= 0.007xWIDTH

Q01109

CONTROLLED COPY



SYMBOL OF QUALITY  
 AN ISO 9001 COMPANY

**JINDAL ALUMINIUM LTD.**  
*BHIWADI-301019 (INDIA)*

	NAME	DATE
DRAWN	ASHUTOSH	06-12-2023
CHECKED	PARVESH	07-12-2023
APPROVED	R.G.PAREKH	07-12-2023
SCALE		1:1
AREA mm <sup>2</sup>		487.45
PERIMETER mm.		276.46
WEIGHT kg/m		1.316
DRAWING No.		SECTION No.
P-JAL-B-399		7000001848
G101688		G101688

- 1. ALL DIMENSIONS ARE IN mm.
- 2. ROUND OFF ALL SHARP CORNERS WITH 0.40 mm.
- 3. TOLERANCES WILL BE AS PER BS:EN-755-9 , UNLESS OTHERWISE SPECIFIED

PARTY'S NAME	ATCO ALUMINIUM SYSTEM, DELHI	
PARTY'S DRAWING No.	AS PER DRAWING	
ALLOY & TEMPER	6063 T6	PRODUCT CODE:-006
		HSN CODE:- 76082000
DESCRIPTION	ROUND TUBE SECTION	