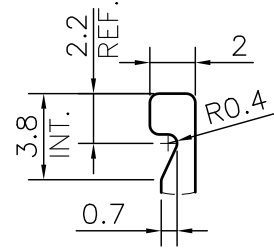
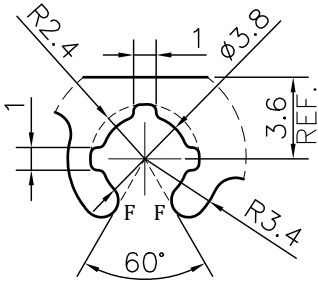


P-JAL-B-392

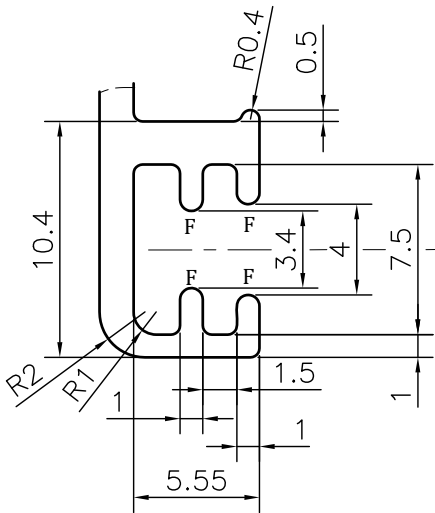
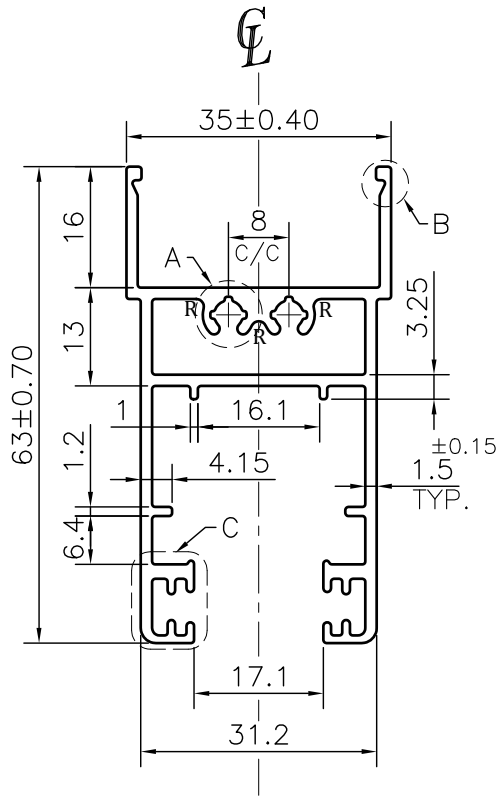
G101703



DETAIL B
SCALE 3:1



DETAIL A
SCALE 3:1



DETAIL C
SCALE 3:1

NOTE:-

- R= 1.0 RADIUS (3 PLACES)**
- F= FULL RADIUS (12 PLACES)**

1. STRAIGHTNESS= 1.7mm/M
2. TWIST= 1.7mm/M
3. ANGULARITY= ±2°
4. FLATNESS= 0.007xWIDTH

Q01088

CONTROLLED COPY



SYMBOL OF QUALITY
AN ISO 9001 COMPANY

JINDAL ALUMINIUM LTD.
BHIWADI-301019 (INDIA)

	NAME	DATE
DRAWN	ASHUTOSH	04-12-2023
CHECKED	PARVESH	16-12-2023
APPROVED	J.N.RAI	16-12-2023

1. ALL DIMENSIONS ARE IN mm.
2. ROUND OFF ALL SHARP CORNERS WITH 0.40 mm.
3. TOLERANCES WILL BE AS PER BS:EN-755-9 , UNLESS OTHERWISE SPECIFIED

SCALE	1:1
AREA mm ²	369.432
PERIMETER mm.	378.576
WEIGHT kg/m	0.997

PARTY'S NAME	GSC ALUSYSTEMS PRIVATE LIMITED, NOIDA	
PARTY'S DRAWING No.	AS PER DRAWING-M33553	
ALLOY & TEMPER	6063 T6	PRODUCT CODE:-048
		HSN CODE:- 76042100
DESCRIPTION	WINDOW SECTION	

DRAWING No.	SECTION No.
P-JAL-B-392	7000001865
G101703	G101703