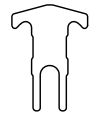
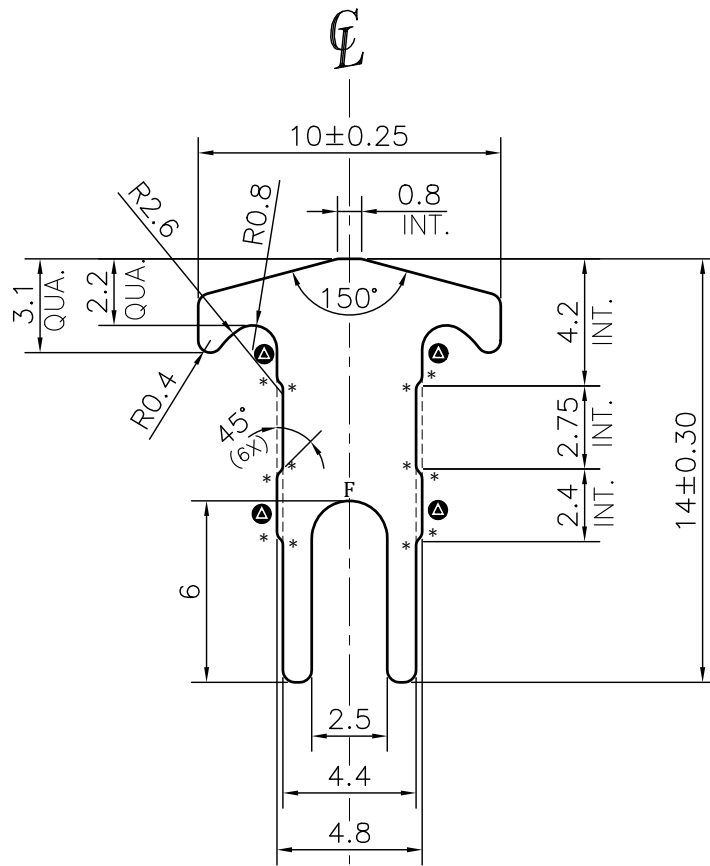


P-JAL-B-393

G101704



SCALE 1:1



ISSUE-2 (04-03-2024)  
STEP ADDED (4 PLACES)

**NOTE:-**  
 \*= 0.30 RADIUS (12 PLACE)  
 F= FULL RADIUS (1 PLACE)

1. STRAIGHTNESS= 1.7mm/M
2. TWIST= 1.7mm/M
3. ANGULARITY= ±2°
4. FLATNESS= 0.007xWIDTH

Q01090

CONTROLLED COPY

 SYMBOL OF QUALITY AN ISO 9001 COMPANY	<b>JINDAL ALUMINIUM LTD.</b> BHIWADI-301019 (INDIA)		NAME	DATE	
	DRAWN	ASHUTOSH	04-03-2024		
	CHECKED	PARVESH	11-03-2024		
	APPROVED	J.N.RAI	11-03-2024		
1. ALL DIMENSIONS ARE IN mm. 2. ROUND OFF ALL SHARP CORNERS WITH 0.40 mm. 3. TOLERANCES WILL BE AS PER BS:EN-755-9 , UNLESS OTHERWISE SPECIFIED			SCALE	4:1	
PARTY'S NAME			GSC ALUSYSTEMS PRIVATE LIMITED, NOIDA	AREA mm <sup>2</sup>	57.409
PARTY'S DRAWING No.			AS PER DRAWING-M33556	PERIMETER mm.	57.28
ALLOY & TEMPER			6063 T6	WEIGHT kg/m	0.155
DESCRIPTION			WINDOW SECTION	DRAWING No.	SECTION No.
				P-JAL-B-393	7000001866
			G101704-ISSUE-2	G101704	
			PRODUCT CODE:-048		
			HSN CODE:- 76042990		