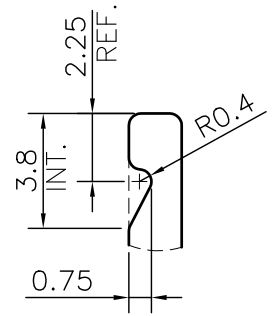
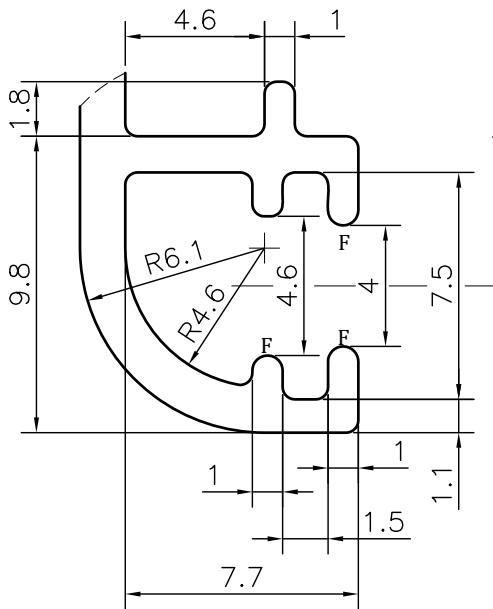
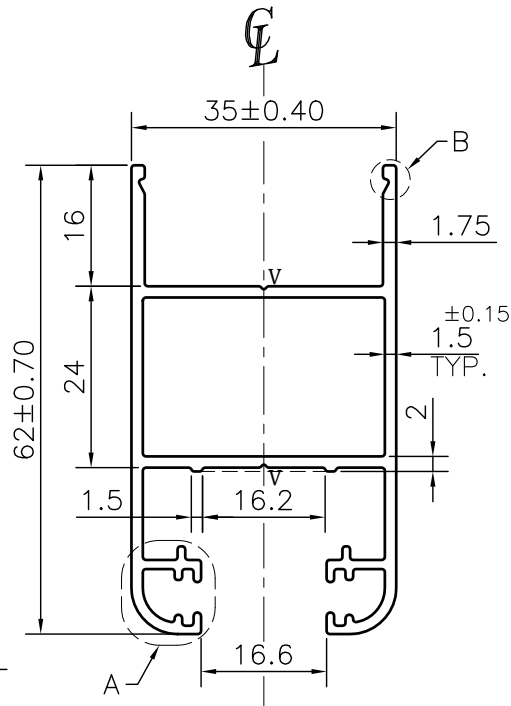


P-JAL-B-394

G101705



DETAIL B
SCALE 4:1



DETAIL A
SCALE 4:1

NOTE:-

- F= FULL RADIUS (6 PLACES)**
- V= 0.4x90° V-GROOVE (2 PLACES)**

1. STRAIGHTNESS= 1.7mm/M
2. TWIST= 1.7mm/M
3. ANGULARITY= ±2°
4. FLATNESS= 0.007xWIDTH

Q01091

CONTROLLED COPY



SYMBOL OF QUALITY
AN ISO 9001 COMPANY

JINDAL ALUMINIUM LTD.
BHIWADI-301019 (INDIA)

	NAME	DATE
DRAWN	ASHUTOSH	04-12-2023
CHECKED	PARVESH	16-12-2023
APPROVED	J.N.RAI	16-12-2023
SCALE		1:1
AREA mm ²		337.167
PERIMETER mm.		346.547
WEIGHT kg/m		0.910
DRAWING No.		SECTION No.
P-JAL-B-394		7000001867
G101705		G101705

1. ALL DIMENSIONS ARE IN mm.
2. ROUND OFF ALL SHARP CORNERS WITH 0.40 mm.
3. TOLERANCES WILL BE AS PER BS:EN-755-9 , UNLESS OTHERWISE SPECIFIED

PARTY'S NAME	GSC ALUSYSTEMS PRIVATE LIMITED, NOIDA	
PARTY'S DRAWING No.	AS PER DRAWING-M33554	
ALLOY & TEMPER	6063 T6	PRODUCT CODE:-048
		HSN CODE:- 76042100
DESCRIPTION	WINDOW SECTION	