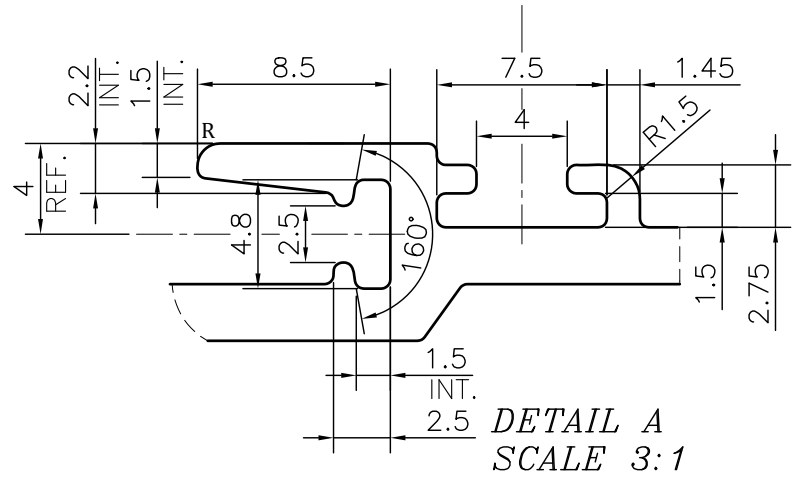
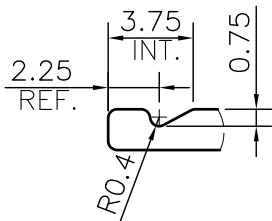
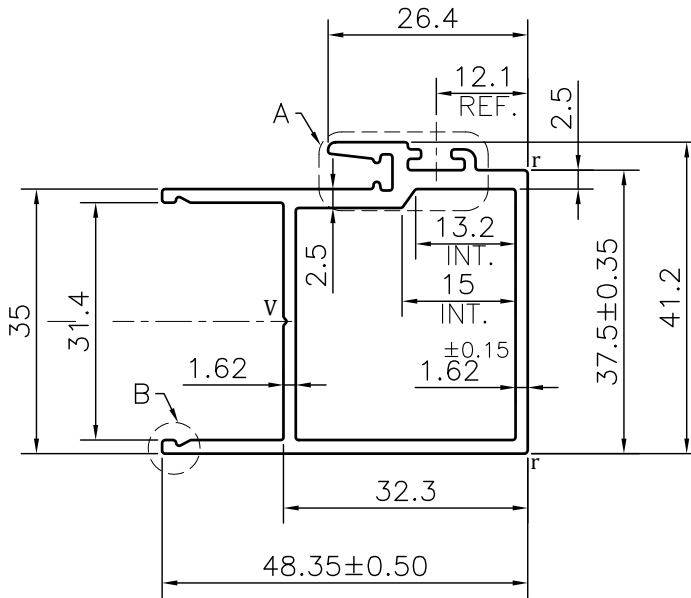


P-JAL-B-395

G101706



DETAIL A
SCALE 3:1



DETAIL B
SCALE 3:1

NOTE:-

r= 0.50 RADIUS (2 PLACES)

R= 1.0 RADIUS (1 PLACE)

V= 0.4x90° V-GROOVE (1 PLACE)

1. STRAIGHTNESS= 1.7mm/M
2. TWIST= 1.7mm/M
3. ANGULARITY= ±2°
4. FLATNESS= 0.007xWIDTH

Q01092

CONTROLLED COPY



SYMBOL OF QUALITY
AN ISO 9001 COMPANY

JINDAL ALUMINIUM LTD.
BHIWADI-301019 (INDIA)

	NAME	DATE
DRAWN	ASHUTOSH	04-12-2023
CHECKED	PARVESH	16-12-2023
APPROVED	J.N.RAI	16-12-2023

1. ALL DIMENSIONS ARE IN mm.
2. ROUND OFF ALL SHARP CORNERS WITH 0.40 mm.
3. TOLERANCES WILL BE AS PER BS:EN-755-9 , UNLESS OTHERWISE SPECIFIED

SCALE	1:1
AREA mm ²	335.516
PERIMETER mm.	239.75
WEIGHT kg/m	0.906
DRAWING No.	SECTION No.
P-JAL-B-395	7000001859
G101706	G101706

PARTY'S NAME	GSC ALUSYSTEMS PRIVATE LIMITED, NOIDA	
PARTY'S DRAWING No.	AS PER DRAWING-M33555	
ALLOY & TEMPER	6063 T6	PRODUCT CODE:-048
		HSN CODE:- 76042100
DESCRIPTION	WINDOW SECTION	