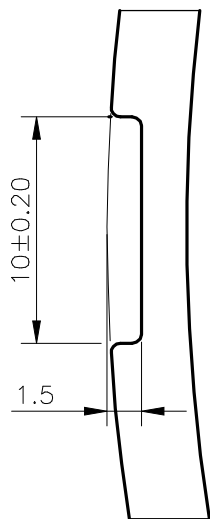
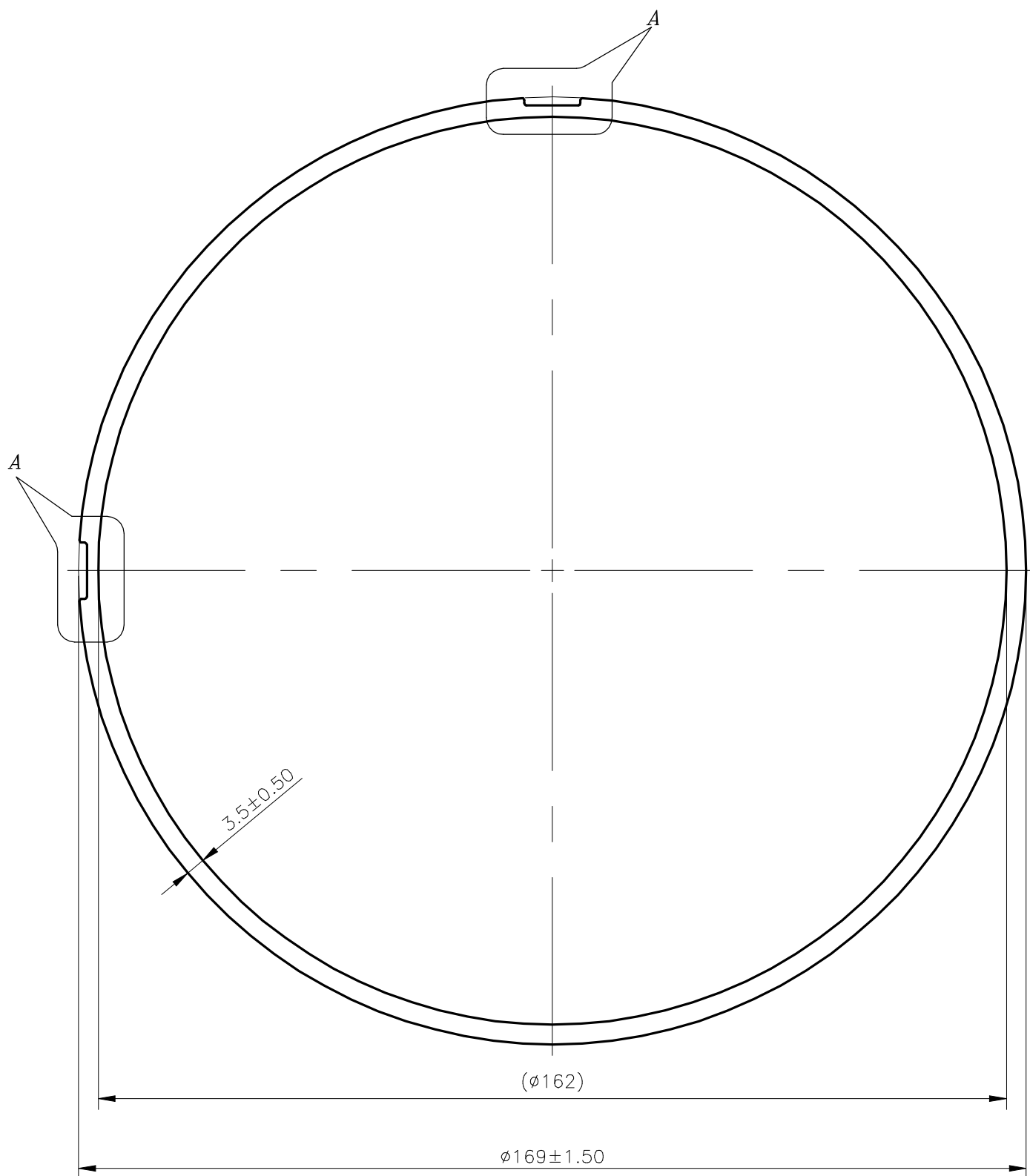


G101711




DETAIL OF "A"
SCALE 3:1

CONTROLLED COPY

FINISH:- ANODIZING

STRAIGHTNESS = 1.7mm/M

OVALITY $\pm 1\%$ OF THE MEAN DIAMETER

<div></div> <div>SYMBOL OF QUALITY AN ISO 9001 COMPANY</div>		<div>JINDAL ALUMINIUM LTD.</div> <div>BANGALORE-560073 (INDIA)</div>		DRAWN		NAME	DATE	
				CHECKED		ADITYA N	11-11-2023	
				APPROVED		B.NATARAJA	20-12-2023	
				SCALE		1:1		
<div>1. ALL DIMENSIONS ARE IN mm.</div> <div>2. ROUND OFF ALL SHARP CORNERS WITH 0.40 mm.</div> <div>3. TOLERANCES WILL BE AS PER IS:6477-1983 , UNLESS OTHERWISE SPECIFIED</div>				AREA mm ²		1790.733		
				PERIMETER mm.		534.847		
				WEIGHT kg/m		4.835		
				DRAWING No.		SECTION No.		
PARTY'S NAME		PRECISION ELECTRONICS LTD., NOIDA				P-26315-2		7000001869
PARTY'S DRAWING No.		PMAS-C9110004-484				G101711		G101711
ALLOY & TEMPER		6063 T6		PRODUCT CODE:-013 HSN CODE:-76082000				
DESCRIPTION		MISC. TUBES						