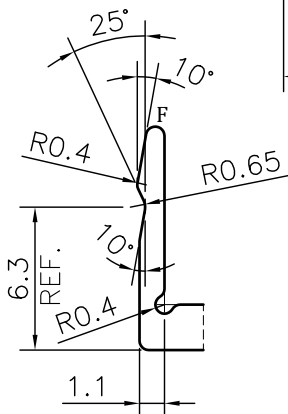
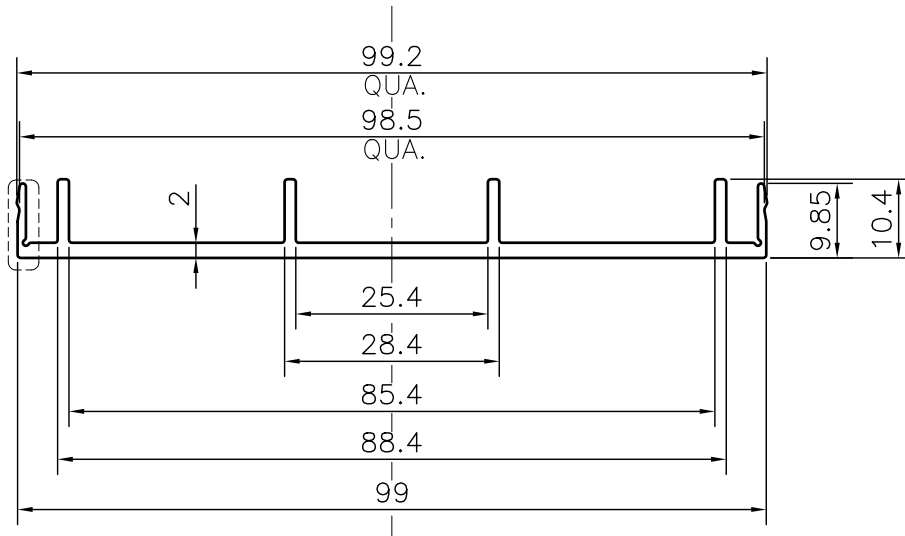
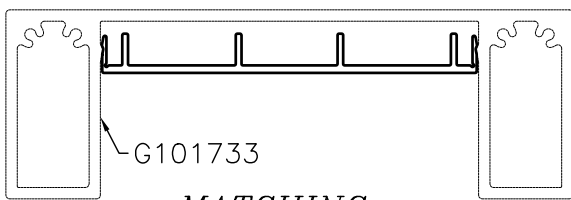


P-JAL-B-373

G101731



DETAIL A
SCALE 3:1



MATCHING
SCALE 1:2

NOTE:-

F= FULL RADIUS (2 PLACES)

1. STRAIGHTNESS= 1.7mm/M
2. TWIST= 1.7mm/M
3. ANGULARITY= ±2°
4. FLATNESS= 0.007xWIDTH

Q01054

CONTROLLED COPY



SYMBOL OF QUALITY
AN ISO 9001 COMPANY

JINDAL ALUMINIUM LTD.
BHIWADI-301019 (INDIA)

	NAME	DATE
DRAWN	ASHUTOSH	10-11-2023
CHECKED	PARVESH	20-12-2023
APPROVED	J.N.RAI	20-12-2023

1. ALL DIMENSIONS ARE IN mm.
2. ROUND OFF ALL SHARP CORNERS WITH 0.40 mm.
3. TOLERANCES WILL BE AS PER BS:EN-755-9, UNLESS OTHERWISE SPECIFIED

SCALE	1:1
AREA mm ²	263.512
PERIMETER mm.	298.33
WEIGHT kg/m	0.711

PARTY'S NAME	NITSON & AMITSU PVT. LTD., NEW DELHI	
PARTY'S DRAWING No.	AS PER AUTOCAD DRAWING	
ALLOY & TEMPER	6063 T6	PRODUCT CODE:-056
		HSN CODE:- 76042990
DESCRIPTION	ARCHITECTURAL MISC. SECTION-COVER CAP CLIP FOR CW3	

DRAWING No.	SECTION No.
P-JAL-B-373	7000001894
G101731	G101731