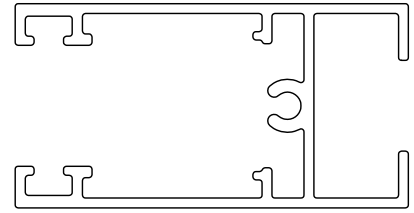
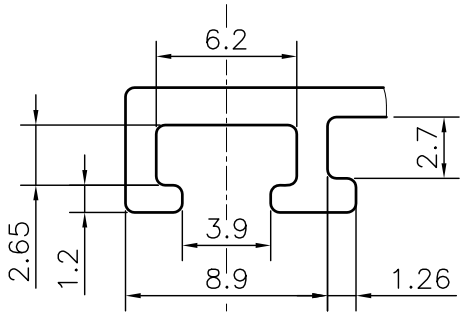


P-JAL-B-410

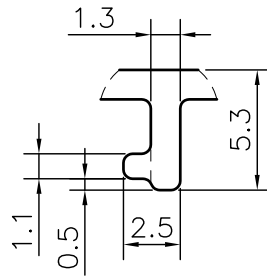
G101750



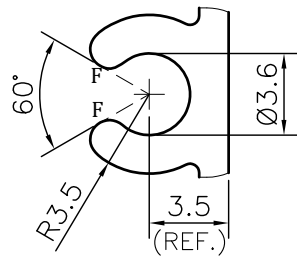
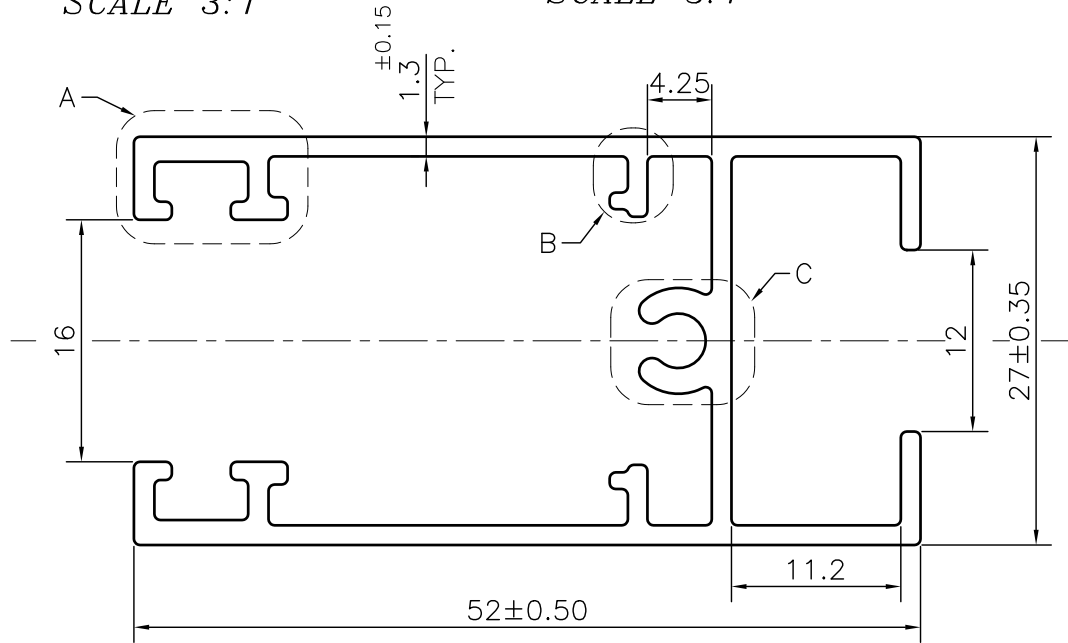
SCALE 1:1



DETAIL A
SCALE 3:1



DETAIL B
SCALE 3:1



DETAIL C
SCALE 3:1

NOTE:-

F= FULL RADIUS (2 PLACES)

1. STRAIGHTNESS= 1.7mm/M
2. TWIST= 1.7mm/M
3. ANGULARITY= ±2°
4. FLATNESS= 0.007xWIDTH

Q01175

CONTROLLED COPY



SYMBOL OF QUALITY
AN ISO 9001 COMPANY

JINDAL ALUMINIUM LTD.
BHIWADI-301019 (INDIA)

	NAME	DATE
DRAWN	ASHUTOSH	14-12-2023
CHECKED	PARVESH	28-12-2023
APPROVED	J.N.RAI	28-12-2023

1. ALL DIMENSIONS ARE IN mm.
2. ROUND OFF ALL SHARP CORNERS WITH 0.40 mm.
3. TOLERANCES WILL BE AS PER BS:EN-755-9 , UNLESS OTHERWISE SPECIFIED

SCALE	2:1
AREA mm ²	250.451
PERIMETER mm.	358.64
WEIGHT kg/m	0.676

PARTY'S NAME	AASTHA ALUMINA (P) LIMITED., GURUGRAM	
PARTY'S DRAWING No.	AS PER DRAWING	
ALLOY & TEMPER	6063 T6	PRODUCT CODE:-048
		HSN CODE:- 76042990
DESCRIPTION	WINDOW SECTION	

DRAWING No.	SECTION No.
P-JAL-B-410	7000001916
G101750	G101750