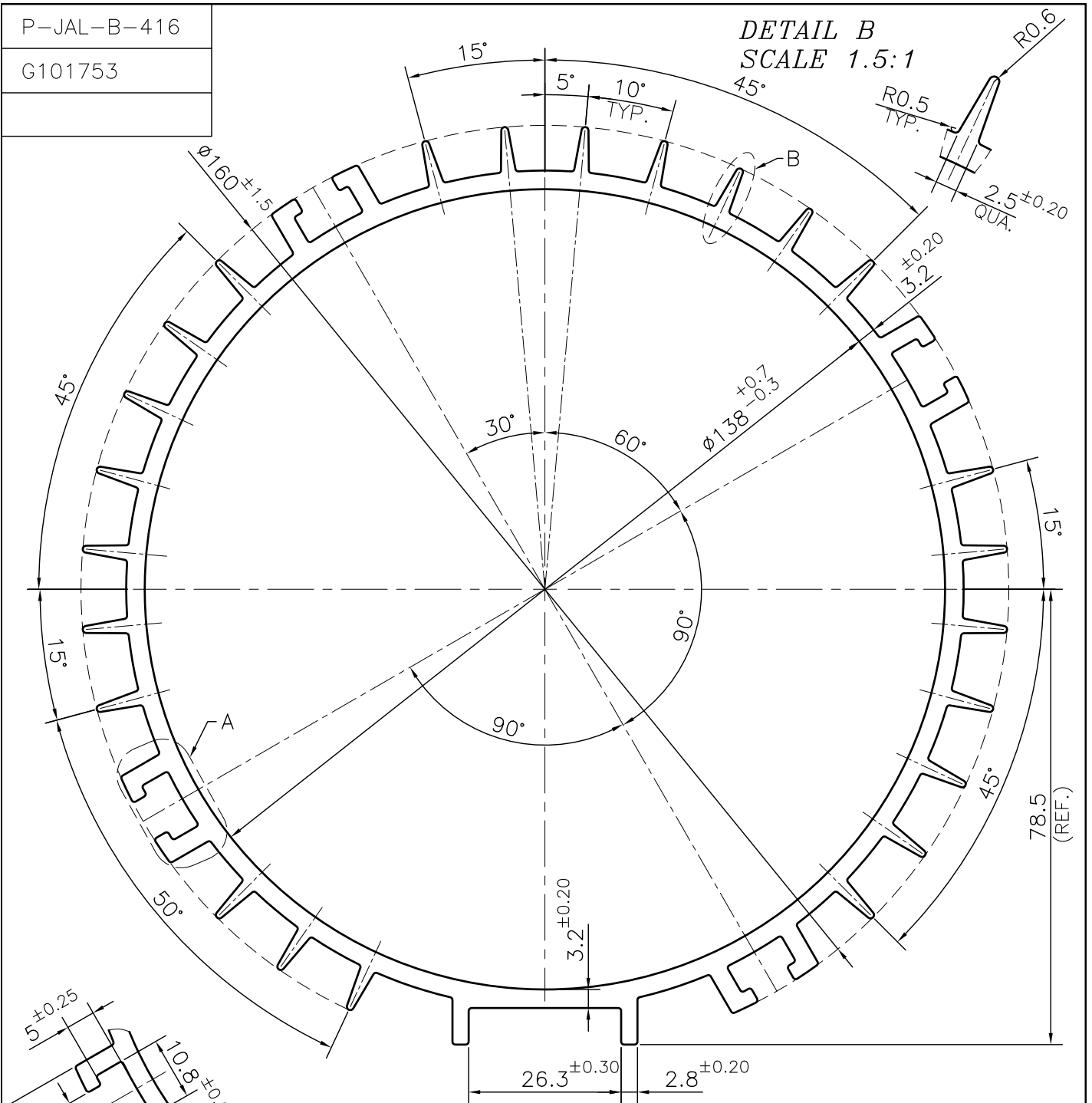


P-JAL-B-416

G101753

DETAIL B  
SCALE 1.5:1




DETAIL A  
SCALE 1:1

1. STRAIGHTNESS= 1.7mm/M
2. TWIST= 1.7mm/M
3. ANGULARITY= ±2°
4. FLATNESS= 0.007xWIDTH
5. OVALITY= ±1.5mm

ROUND OFF ALL SHARP CORNERS WITH 0.50 mm.

Q01160

CONTROLLED COPY

 SYMBOL OF QUALITY AN ISO 9001 COMPANY	<b>JINDAL ALUMINIUM LTD.</b> BHIWADI-301019 (INDIA)		DRAWN	ASHUTOSH	18-12-2023
			CHECKED	PARVESH	25-12-2023
1. ALL DIMENSIONS ARE IN mm. 2. ROUND OFF ALL SHARP CORNERS WITH 0.40 mm. 3. TOLERANCES WILL BE AS PER BS:EN-755-9 , UNLESS OTHERWISE SPECIFIED			APPROVED	J.N.RAI	25-12-2023
			SCALE		1:1
PARTY'S NAME UNITED ENGINEERS			AREA mm <sup>2</sup>		2056.093
			PERIMETER mm.		948.627
PARTY'S DRAWING No. AS PER DRAWING			WEIGHT kg/m		5.551
			DRAWING No.	SECTION No.	
ALLOY & TEMPER 6063 T6			P-JAL-B-416	7000001919	
			G101753	G101753	
DESCRIPTION MOTOR BODY SECTION			PRODUCT CODE:-084		
			HSN CODE:- 76042100		