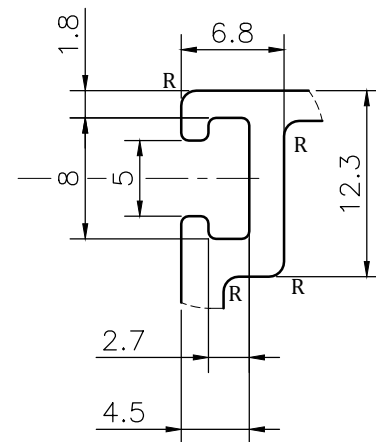
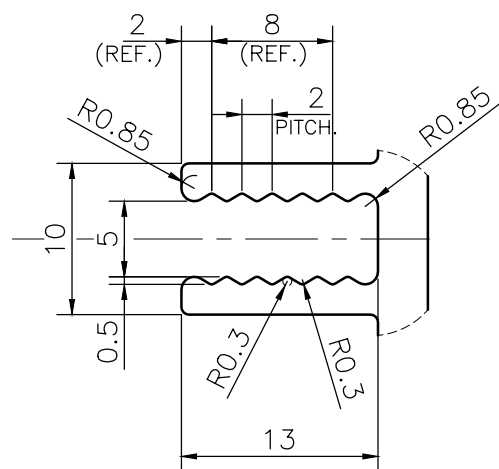
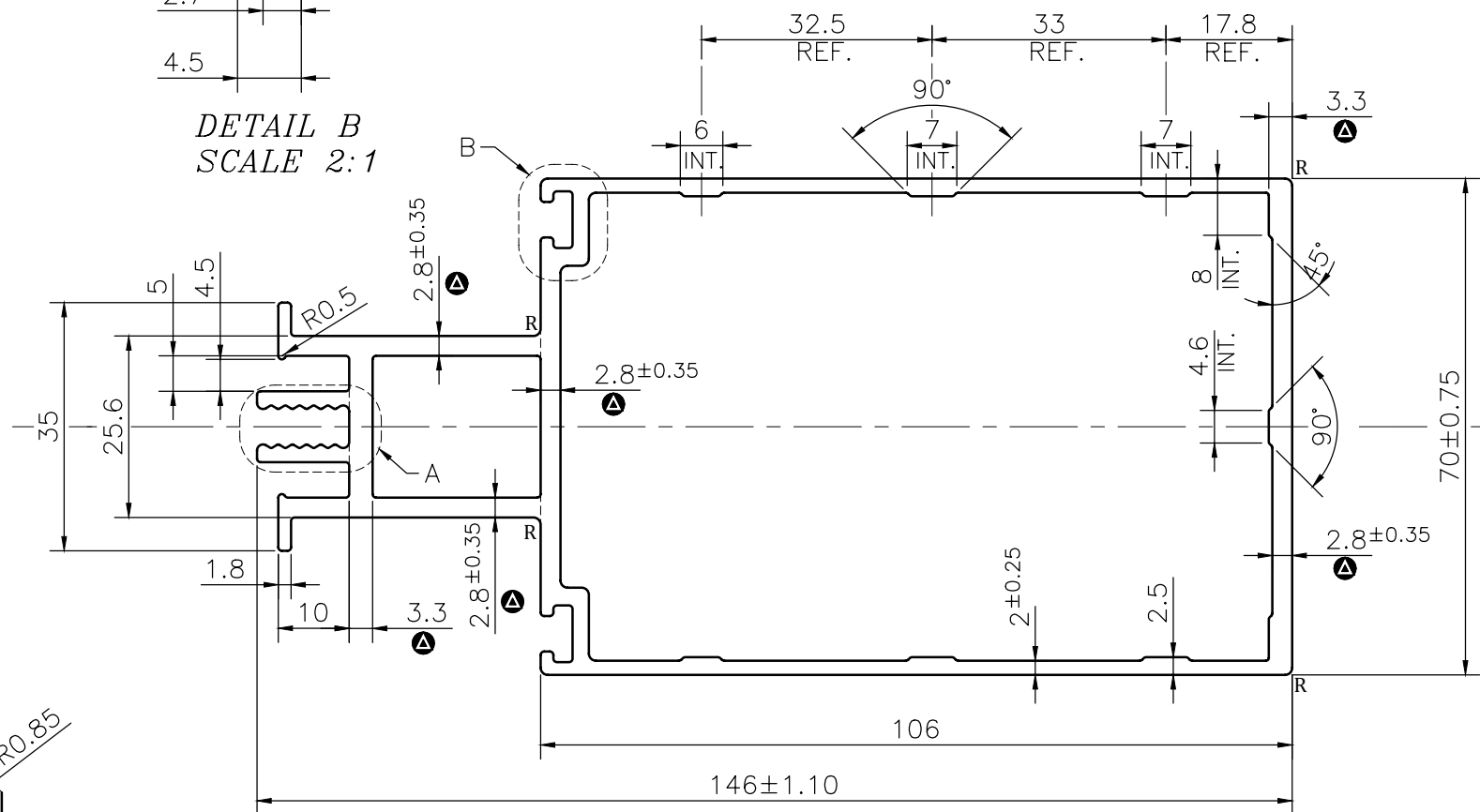


P-JAL-B-404-1

G101787



DETAIL B
SCALE 2:1



DETAIL A
SCALE 2:1

ISSUE-2 (30-04-2024)

- * THICKNESS CHANGED FROM 2.0mm TO 2.8mm.
- * THICKNESS CHANGED FROM 2.0mm TO 3.3mm.
- * THICKNESS CHANGED FROM 2.5mm TO 3.3mm.


NOTE:-
R= 1.0 RADIUS (12 PLACES)

ROUND OFF ALL SHARP CORNERS WITH 0.50 mm.

1. STRAIGHTNESS= 1.7mm/M
2. TWIST= 1.7mm/M
3. ANGULARITY= ±2°
4. FLATNESS= 0.007xWIDTH

Q01151

CONTROLLED COPY

 SYMBOL OF QUALITY AN ISO 9001 COMPANY	JINDAL ALUMINIUM LTD. BHIWADI-301019 (INDIA)	NAME	DATE
		DRAWN	ASHUTOSH 30-04-2024
1. ALL DIMENSIONS ARE IN mm. 2. ROUND OFF ALL SHARP CORNERS WITH 0.40 mm. 3. TOLERANCES WILL BE AS PER BS:EN-755-9 , UNLESS OTHERWISE SPECIFIED		CHECKED	SK SHARMA 10-05-2024
		APPROVED	JN RAI 10-05-2024
PARTY'S NAME K.S.V INFRABUILD, GREATER NOIDA		SCALE	1:1
		AREA mm ²	1191.829
PARTY'S DRAWING No. AS PER DRAWING -MULLION (70x146x2mm)		PERIMETER mm.	541.528
		WEIGHT kg/m	3.218
ALLOY & TEMPER 6063 T6		DRAWING No.	SECTION No.
		P-JAL-B-404-1	700001954
DESCRIPTION CURTAIN WALL SECTION- MULLION		G101787-ISSUE-2	G101787
		PRODUCT CODE:-055	
		HSN CODE:- 76042100	