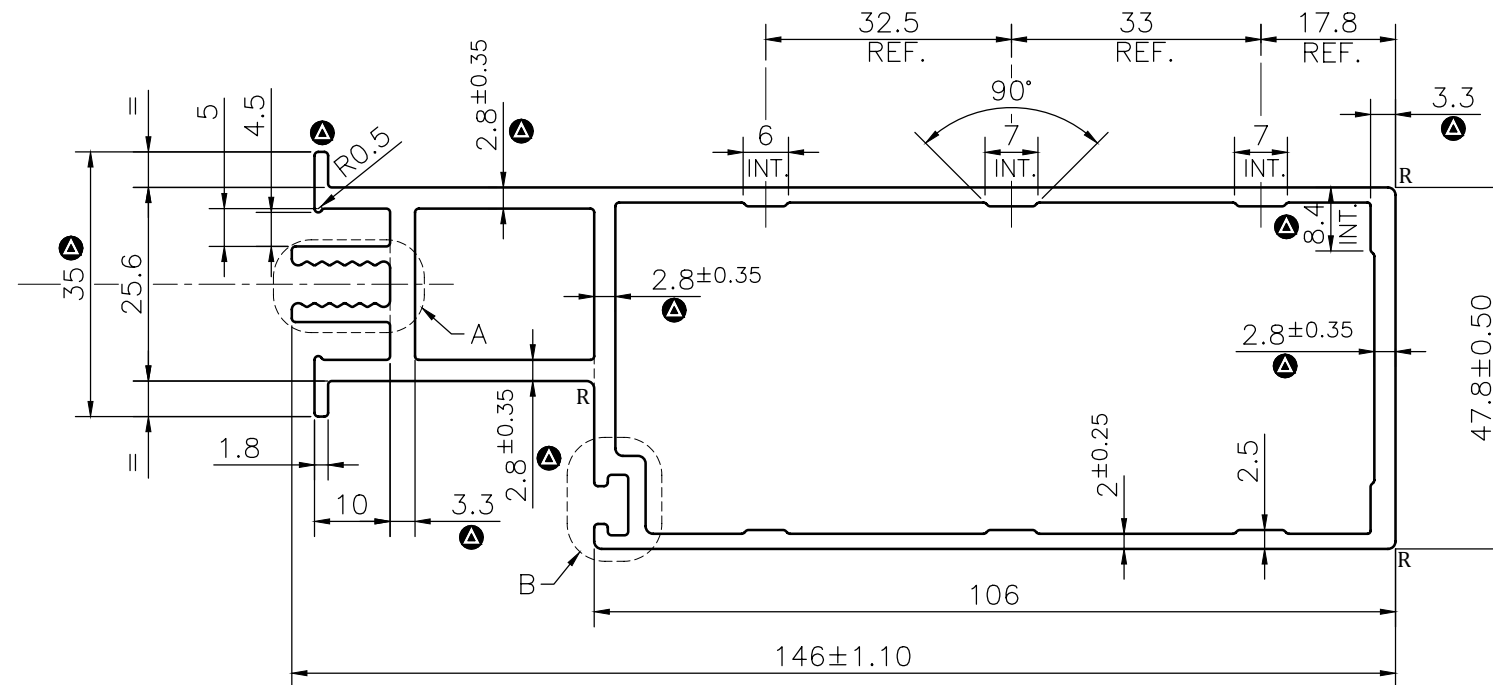


DETAIL A
SCALE 2:1

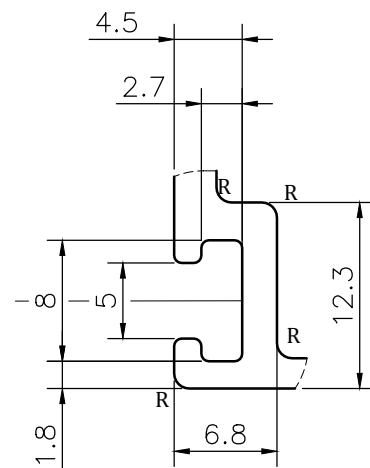


ISSUE-2 (30-04-2024)

- * THICKNESS CHANGED FROM 2.0mm TO 2.8mm.
- * THICKNESS CHANGED FROM 2.0mm TO 3.3mm.
- * THICKNESS CHANGED FROM 2.5mm TO 3.3mm.
- * STEP CHANGE FROM 8.0mm TO 8.4mm.
- * 4.7x1.8mm RIB ADDED.
- * DIMENSION CHANGED FROM 30.3mm TO 35mm

NOTE:-
R= 1.0 RADIUS (7 PLACES)

ROUND OFF ALL SHARP CORNERS WITH 0.50 mm.




DETAIL B
SCALE 2:1

1. STRAIGHTNESS= 1.7mm/M
2. TWIST= 1.7mm/M
3. ANGULARITY= ±2°
4. FLATNESS= 0.007xWIDTH

Q01152

CONTROLLED COPY

 SYMBOL OF QUALITY AN ISO 9001 COMPANY	JINDAL ALUMINIUM LTD. BHIWADI-301019 (INDIA)		NAME	DATE
	PARTY'S NAME	K.S.V INFRABUILD, GREATER NOIDA		DRAWN
PARTY'S DRAWING No.	AS PER DRAWING -END MULLION (47.8x146x2mm)		CHECKED	SK SHRAMA 10-05-2024
ALLOY & TEMPER	6063 T6	PRODUCT CODE:-055	APPROVED	JN RAI 10-05-2024
DESCRIPTION	CURTAIN WALL SECTION- MULLION		SCALE	1:1
		HSN CODE:- 76042100	AREA mm ²	1054.598
			PERIMETER mm.	484.703
			WEIGHT kg/m	2.847
			DRAWING No.	SECTION No.
			P-JAL-B-405-1	7000001955
			G101788-ISSUE-2	G101788