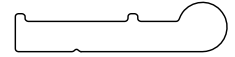
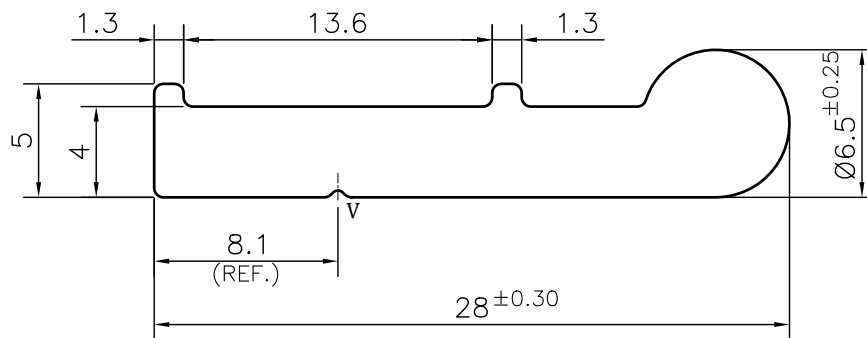


P-JAL-B-429

G101799



SCALE 1:1

**NOTE:-****V = 0.3x90° V-GROOVE (1 PLACE)**

1. STRAIGHTNESS= 1.7mm/M
2. TWIST= 1.7mm/M
3. ANGULARITY= ±2°
4. FLATNESS= 0.007xWIDTH

Q01207

CONTROLLED COPY



SYMBOL OF QUALITY  
AN ISO 9001 COMPANY

**JINDAL ALUMINIUM LTD.**  
BANGALORE-560073 (INDIA)

	NAME	DATE
DRAWN	ASHUTOSH	04-01-2024
CHECKED	PARVESH	11-01-2024
APPROVED	J.N.RAI	11-01-2024

1. ALL DIMENSIONS ARE IN mm.
2. ROUND OFF ALL SHARP CORNERS WITH 0.40 mm.
3. TOLERANCES WILL BE AS PER BS:EN-755-9 , UNLESS OTHERWISE SPECIFIED

SCALE	3:1
AREA mm <sup>2</sup>	123.852
PERIMETER mm.	67.62
WEIGHT kg/m	0.334

PARTY'S NAME	K.S.V INFRABUILD, GREATER NOIDA		DRAWING No.	SECTION No.
PARTY'S DRAWING No.	AS PER DRAWING-DIE/KSV/DIE/NIT-N/D001		P-JAL-B-429	7000001971
ALLOY & TEMPER	6063 T6	PRODUCT CODE:-055	G101799	G101799
		HSN CODE:-76042990		
DESCRIPTION	CURTAIN WALL SECTION-GLASS TOGGLE			