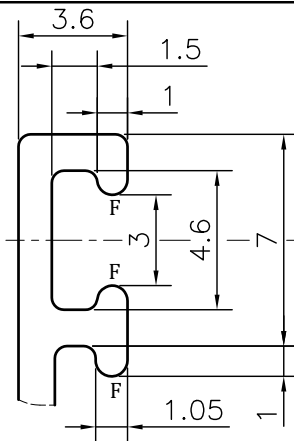
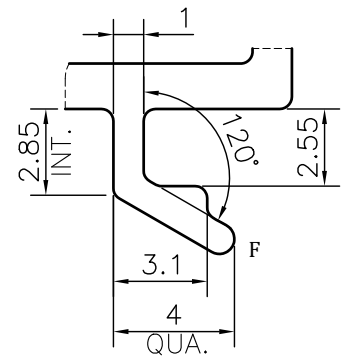
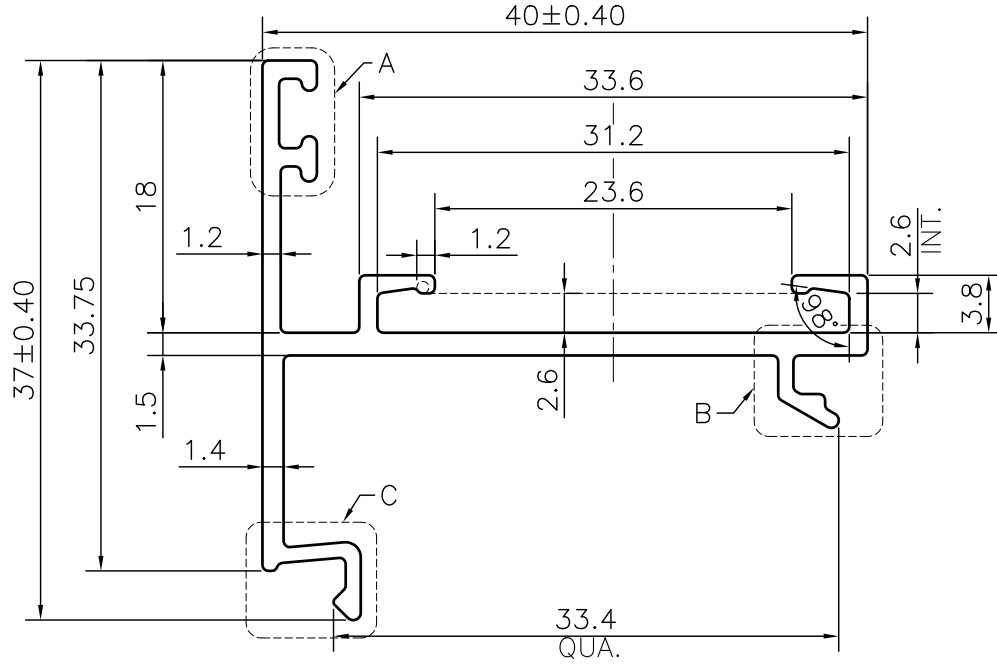
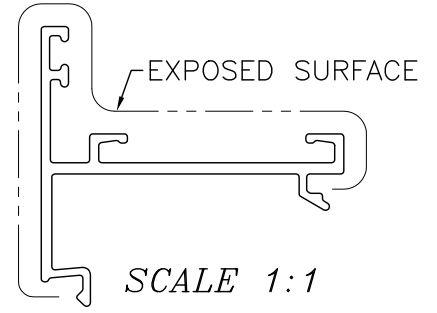


P-JAL-B-419-1

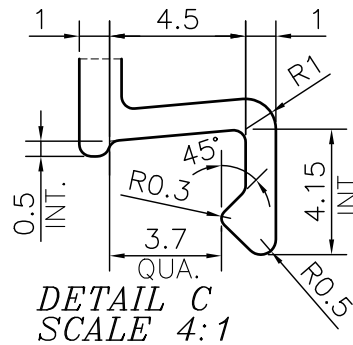
G101810



DETAIL A
SCALE 4:1



DETAIL B
SCALE 4:1



DETAIL C
SCALE 4:1

NOTE:-

F= FULL RADIUS (4 PLACES)

1. STRAIGHTNESS= 1.7mm/M
2. TWIST= 1.7mm/M
3. ANGULARITY= ±2°
4. FLATNESS= 0.007xWIDTH

Q01169

CONTROLLED COPY



SYMBOL OF QUALITY
AN ISO 9001 COMPANY

JINDAL ALUMINIUM LTD.
BHIWADI-301019 (INDIA)

	NAME	DATE
DRAWN	ASHUTOSH	26-12-2023
CHECKED	PARVESH	20-01-2024
APPROVED	J.N.RAI	20-01-2024
SCALE		2:1
AREA mm ²		143.359
PERIMETER mm.		218.25
WEIGHT kg/m		0.387
DRAWING No.	SECTION No.	
P-JAL-B-419-1	7000001973	
G101810	G101810	

1. ALL DIMENSIONS ARE IN mm.
2. ROUND OFF ALL SHARP CORNERS WITH 0.40 mm.
3. TOLERANCES WILL BE AS PER BS:EN-755-9 , UNLESS OTHERWISE SPECIFIED

PARTY'S NAME	GSC ALUSYSTEMS PRIVATE LIMITED, NOIDA	
PARTY'S DRAWING No.	AS PER PROPOSAL DRAWING-M37405	
ALLOY & TEMPER	6063 T6	PRODUCT CODE:-048
		HSN CODE:- 76042990
DESCRIPTION	WINDOW SECTION	