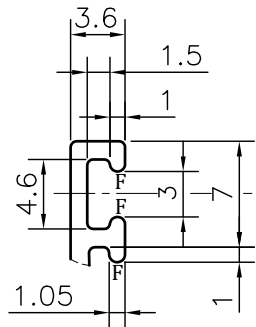
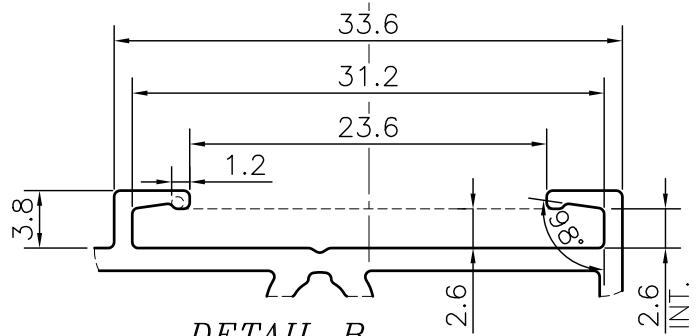


P-JAL-B-421-1

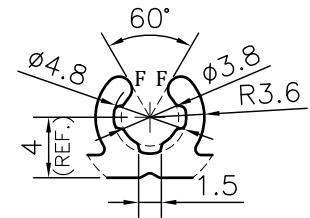
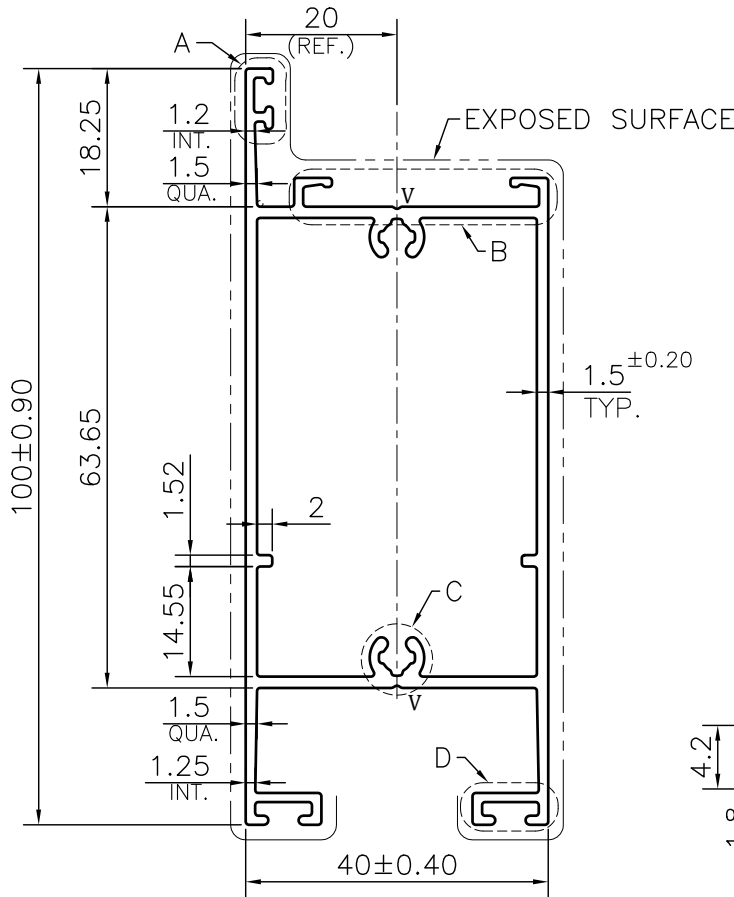
G101812



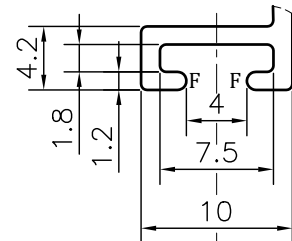
DETAIL A
SCALE 2:1



DETAIL B
SCALE 2:1



DETAIL C
SCALE 2:1



DETAIL D
SCALE 2:1

NOTE:-
F= FULL RADIUS (11 PLACES)
V= 0.30x120° V-GROOVE (2 PLACES)

1. STRAIGHTNESS= 1.7mm/M
2. TWIST= 1.7mm/M
3. ANGULARITY= ±2°
4. FLATNESS= 0.007xWIDTH

Q01171

CONTROLLED COPY



SYMBOL OF QUALITY
AN ISO 9001 COMPANY

JINDAL ALUMINIUM LTD.
 BHIWADI-301019 (INDIA)

	NAME	DATE
DRAWN	ASHUTOSH	26-12-2023
CHECKED	PARVESH	20-01-2024
APPROVED	J.N.RAI	20-01-2024
SCALE		1:1
AREA mm ²		477.414
PERIMETER mm.		412.536
WEIGHT kg/m		1.289
DRAWING No.	SECTION No.	
P-JAL-B-421-1	7000001975	
G101812	G101812	

1. ALL DIMENSIONS ARE IN mm.
2. ROUND OFF ALL SHARP CORNERS WITH 0.40 mm.
3. TOLERANCES WILL BE AS PER BS:EN-755-9 , UNLESS OTHERWISE SPECIFIED

PARTY'S NAME	GSC ALUSYSTEMS PRIVATE LIMITED, NOIDA	
PARTY'S DRAWING No.	AS PER PROPOSAL DRAWING-M33256	
ALLOY & TEMPER	6063 T6	PRODUCT CODE:-048
		HSN CODE:- 76042100
DESCRIPTION	WINDOW SECTION	