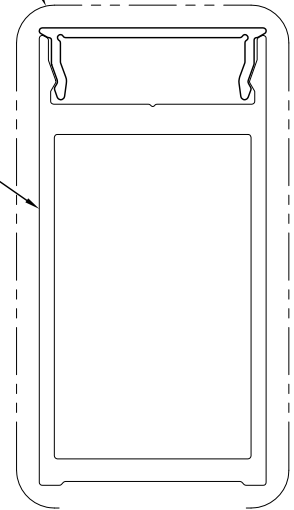


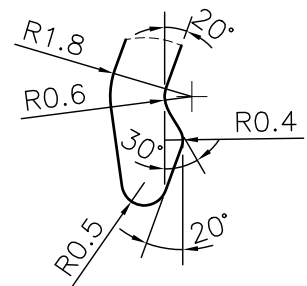
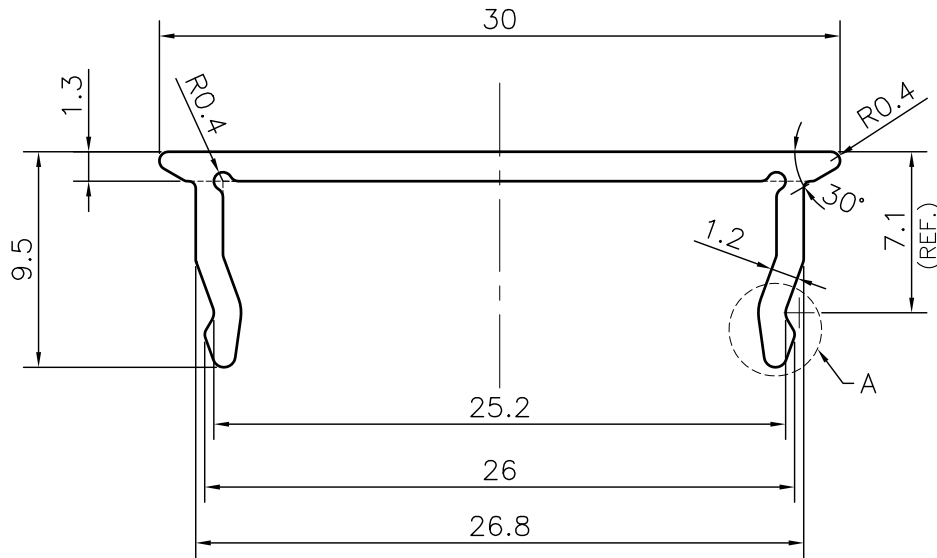
P-JAL-B-426
G101824

EXPOSED SURFACE



G101823

SCALE 1:1




DETAIL A  
SCALE 6:1

1. STRAIGHTNESS= 1.7mm/M
2. TWIST= 1.7mm/M
3. ANGULARITY=  $\pm 2^\circ$
4. FLATNESS= 0.007xWIDTH

Q01155

CONTROLLED COPY

 SYMBOL OF QUALITY AN ISO 9001 COMPANY	<b>JINDAL ALUMINIUM LTD.</b> BHIWADI-301019 (INDIA)		NAME	DATE	
			DRAWN	ASHUTOSH	28-12-2023
1. ALL DIMENSIONS ARE IN mm. 2. ROUND OFF ALL SHARP CORNERS WITH 0.40 mm. 3. TOLERANCES WILL BE AS PER BS:EN-755-9 , UNLESS OTHERWISE SPECIFIED			CHECKED	PARVESH	25-01-2024
			APPROVED	J.N.RAI	25-01-2024
PARTY'S NAME GSC ALUSYSTEMS PRIVATE LIMITED, GREATER NOIDA			SCALE		3:1
			AREA mm <sup>2</sup>		57.371
PARTY'S DRAWING No. AS PER DRAWING-M33559			PERIMETER mm.		95.19
			WEIGHT kg/m		0.155
ALLOY & TEMPER 6063 T6			DRAWING No.		P-JAL-B-426
			SECTION No.		7000001994
DESCRIPTION GLAZING CLIP SECTION			PRODUCT CODE:-044		G101824
			HSN CODE:- 76042990		G101824