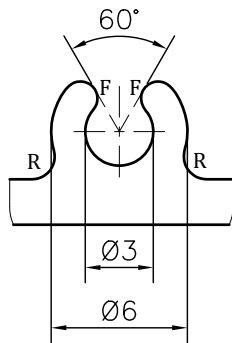
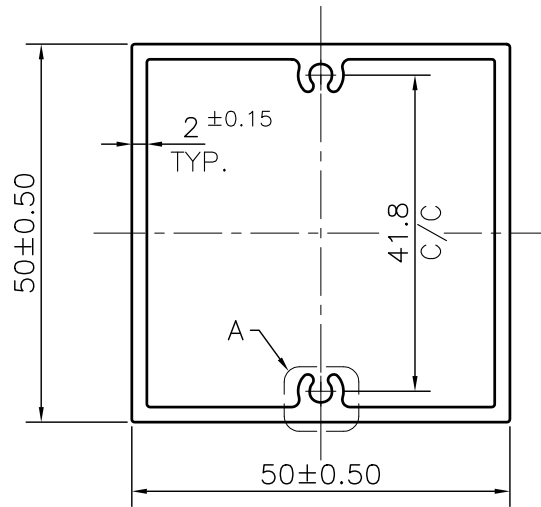


P-JAL-B-433

G101840



DETAIL A
SCALE 3:1

NOTE:-

- R= 1.0 RADIUS (4 PLACES)**
- F= FULL RADIUS (4 PLACES)**

1. STRAIGHTNESS= 1.7mm/M
2. TWIST= 1.7mm/M
3. ANGULARITY= ±2°
4. FLATNESS= 0.007xWIDTH

Q01233

CONTROLLED COPY



SYMBOL OF QUALITY
AN ISO 9001 COMPANY

JINDAL ALUMINIUM LTD.
BHIWADI-301019 (INDIA)

	NAME	DATE
DRAWN	ASHUTOSH	11-01-2024
CHECKED	PARVESH	01-02-2024
APPROVED	J.N.RAI	01-02-2024

1. ALL DIMENSIONS ARE IN mm.
2. ROUND OFF ALL SHARP CORNERS WITH 0.40 mm.
3. TOLERANCES WILL BE AS PER BS:EN-755-9 , UNLESS OTHERWISE SPECIFIED

SCALE	1:1
AREA mm ²	415.175
PERIMETER mm.	199.313
WEIGHT kg/m	1.121

PARTY'S NAME	AASTHA ALUMINA (P) LIMITED., GURUGRAM	DRAWING No.	P-JAL-B-433	SECTION No.	7000001989
PARTY'S DRAWING No.	AS PER DRAWING		G101840		G101840
ALLOY & TEMPER	6063 T6	PRODUCT CODE:-056			
		HSN CODE:- 76042100			
DESCRIPTION	ARCHITECTURAL MISC. SECTION				