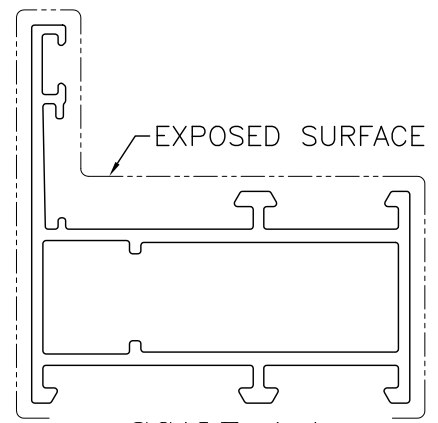
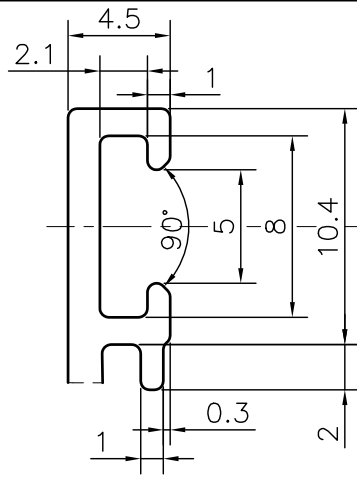
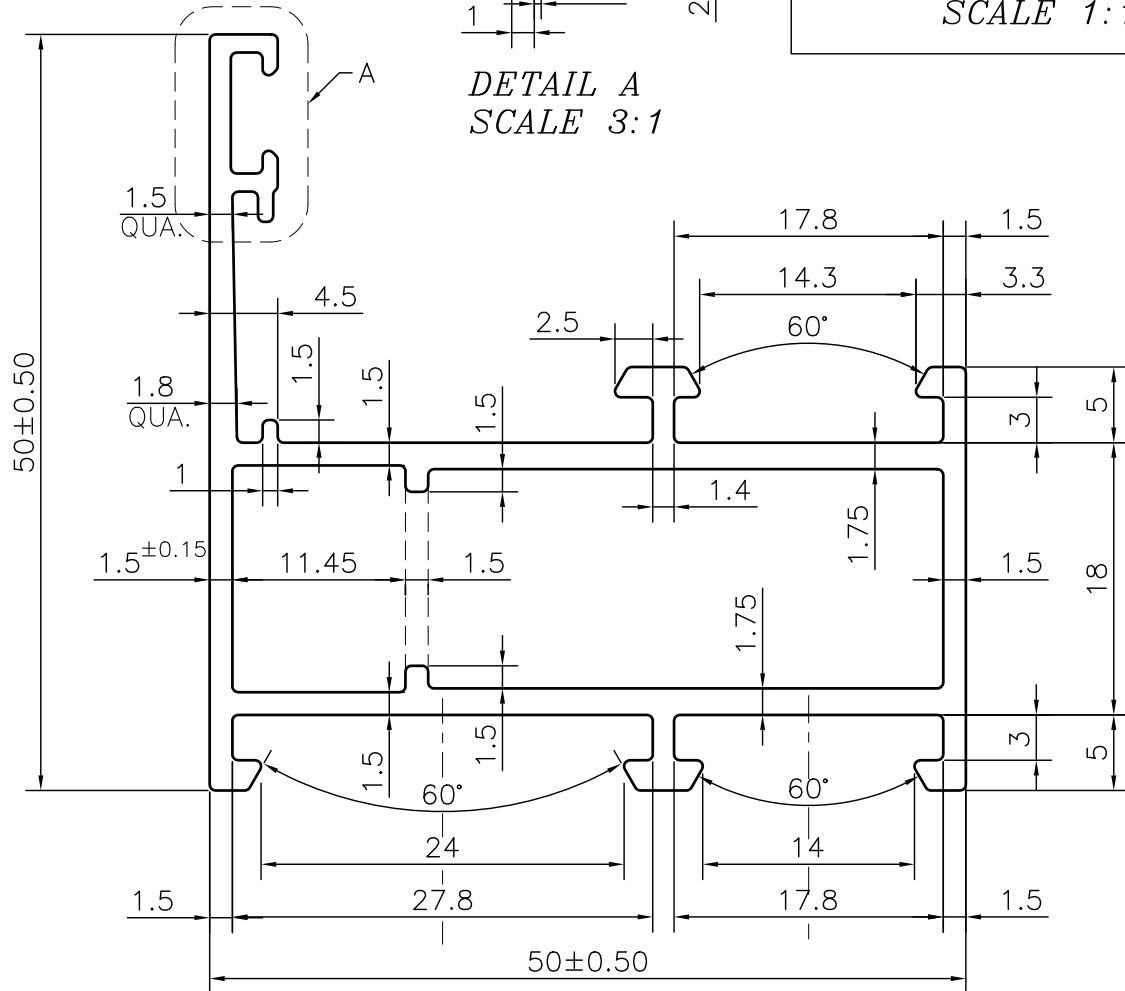


P-JAL-B-437-1

G101946



DETAIL A
SCALE 3:1



1. STRAIGHTNESS= 1.7mm/M
2. TWIST= 1.7mm/M
3. ANGULARITY= ±2°
4. FLATNESS= 0.007xWIDTH

Q01264

CONTROLLED COPY



SYMBOL OF QUALITY
AN ISO 9001 COMPANY

JINDAL ALUMINIUM LTD.
BHIWADI-301019 (INDIA)

	NAME	DATE
DRAWN	ASHUTOSH	24-01-2024
CHECKED	PARVESH	28-02-2024
APPROVED	J.N.RAI	28-02-2024

1. ALL DIMENSIONS ARE IN mm.
2. ROUND OFF ALL SHARP CORNERS WITH 0.40 mm.
3. TOLERANCES WILL BE AS PER BS:EN-755-9 , UNLESS OTHERWISE SPECIFIED

SCALE	2:1
AREA mm ²	332.374
PERIMETER mm.	279.526
WEIGHT kg/m	0.897

PARTY'S NAME	GSC ALUSYSTEMS PRIVATE LIMITED, NOIDA	
PARTY'S DRAWING No.	AS PER AutoCAD DRAWING-M37755	
ALLOY & TEMPER	6063 T6	PRODUCT CODE:-048
		HSN CODE:- 76042100
DESCRIPTION	WINDOW SECTION-CASEMENT	

DRAWING No.	SECTION No.
P-JAL-B-437-1	7000002110
G101946	G101946