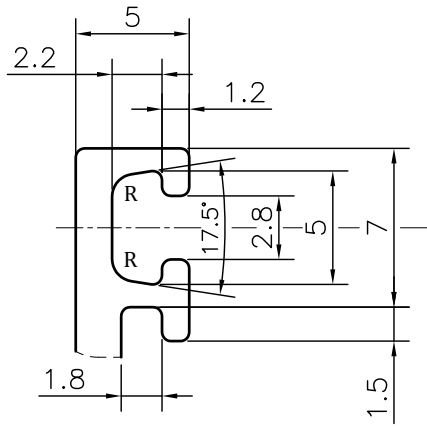
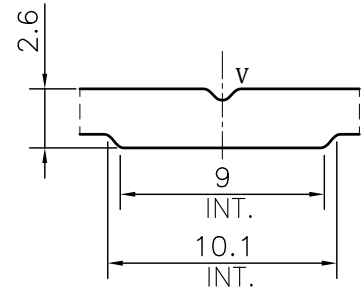


P-JAL-B-444-1

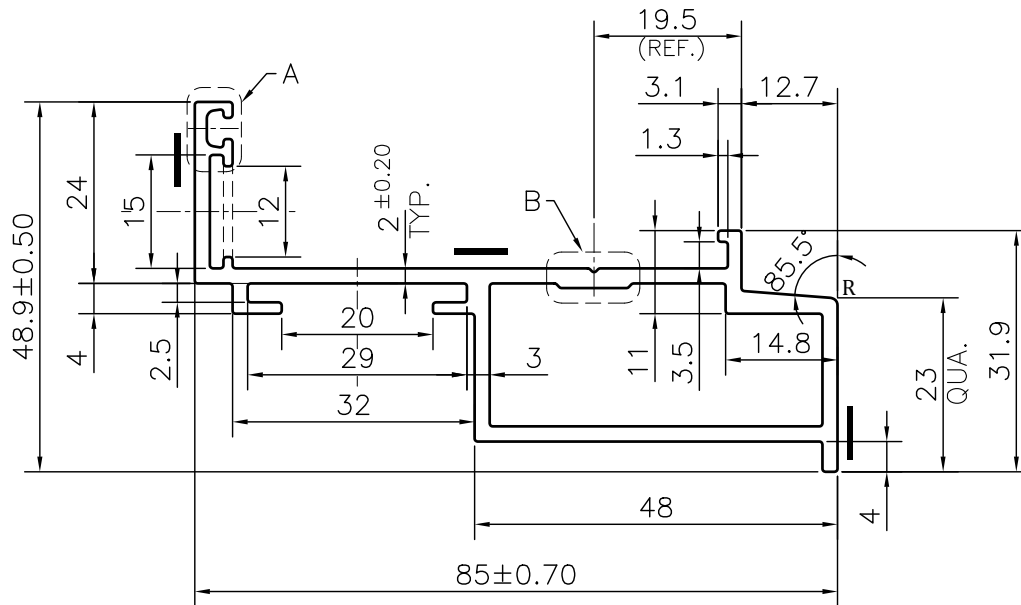
G101970



DETAIL A  
SCALE 3:1



DETAIL B  
SCALE 3:1



**NOTE:-**  
**R= 1.0 RADIUS (3 PLACES)**  
**V= 0.50x90° V-GROOVE (1 PLACE)**

**PLEASE NOTE:-**  
 — DUE TO THICKNESS VARIATION  
 IMPRESSION MARK MAY APPEAR  
 IN THIS MARKED PORTION.

1. STRAIGHTNESS= 1.7mm/M
2. TWIST= 1.7mm/M
3. ANGULARITY= ±2°
4. FLATNESS= 0.007xWIDTH

Q01353

CONTROLLED COPY



SYMBOL OF QUALITY  
AN ISO 9001 COMPANY

**JINDAL ALUMINIUM LTD.**  
 BHIWADI-301019 (INDIA)

	NAME	DATE
DRAWN	ASHUTOSH	26-02-2024
CHECKED	PARVESH	11-03-2024
APPROVED	J.N.RAI	11-03-2024

1. ALL DIMENSIONS ARE IN mm.
2. ROUND OFF ALL SHARP CORNERS WITH 0.40 mm.
3. TOLERANCES WILL BE AS PER BS:EN-755-9 , UNLESS OTHERWISE SPECIFIED

SCALE	1:1
AREA mm <sup>2</sup>	453.222
PERIMETER mm.	320.864
WEIGHT kg/m	1.224

PARTY'S NAME	SPECIALITIES ALUMINIUM GRILLS PVT. LTD., KANPUR	DRAWING No.	P-JAL-B-444-1	SECTION No.	7000002146
PARTY'S DRAWING No.	AS PER DRAWING-OUTER FRAME		G101970		G101970
ALLOY & TEMPER	6063 T6	PRODUCT CODE:-055			
		HSN CODE:- 76042100			
DESCRIPTION	CURTAIN WALL SECTION				