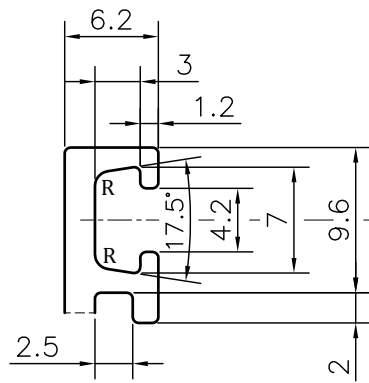
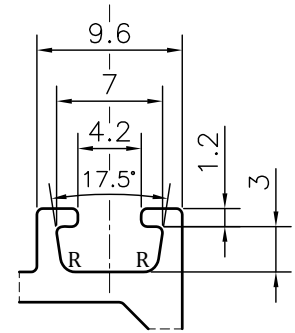


P-JAL-B-442

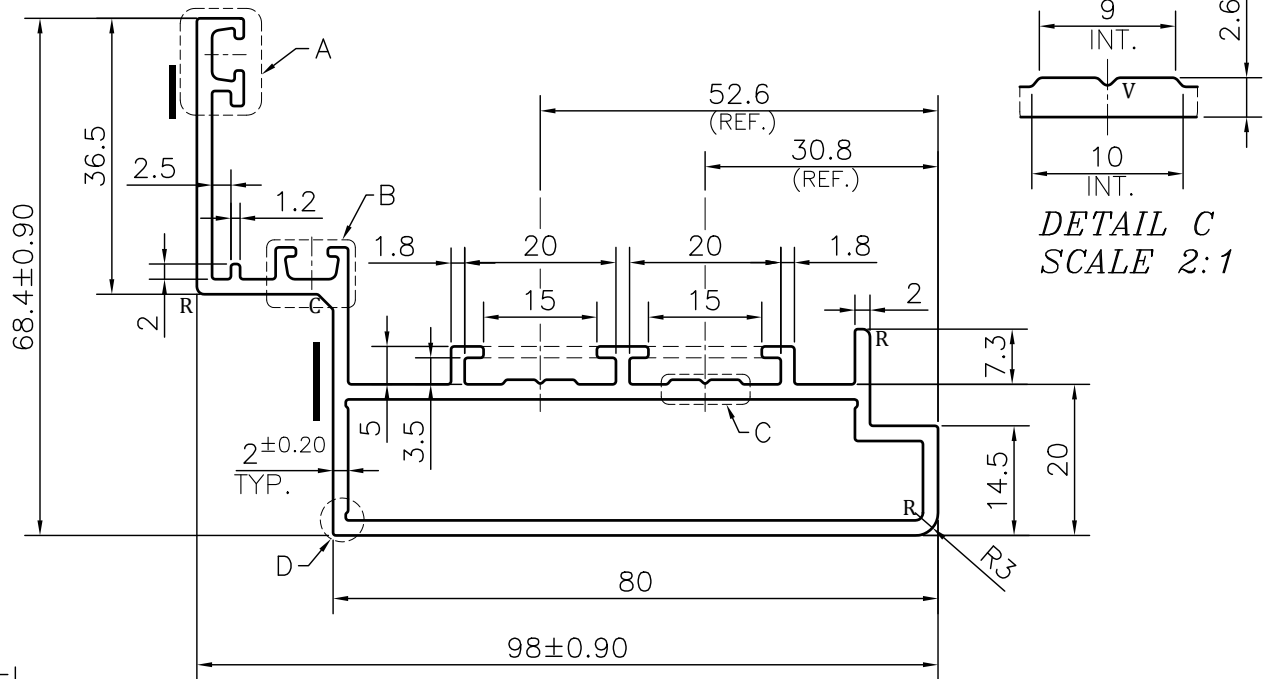
G101971



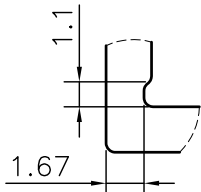
DETAIL A
SCALE 2:1



DETAIL B
SCALE 2:1



DETAIL C
SCALE 2:1



DETAIL D
SCALE 3:1

NOTE:-

R= 1.0 RADIUS (7 PLACES)

V= 0.50x90° V-GROOVE (2 PLACES)

C= 2x45° CHAMFER (1 PLACE)

PLEASE NOTE:-

— DUE TO THICKNESS VARIATION
IMPRESSION MARK MAY APPEAR
IN THIS MARKED PORTION.

1. STRAIGHTNESS= 1.7mm/M
2. TWIST= 1.7mm/M
3. ANGULARITY= ±2°
4. FLATNESS= 0.007xWIDTH

Q01351

CONTROLLED COPY



SYMBOL OF QUALITY
AN ISO 9001 COMPANY

JINDAL ALUMINIUM LTD.
BHIWADI-301019 (INDIA)

1. ALL DIMENSIONS ARE IN mm.
2. ROUND OFF ALL SHARP CORNERS WITH 0.40 mm.
3. TOLERANCES WILL BE AS PER BS:EN-755-9 , UNLESS OTHERWISE SPECIFIED

PARTY'S NAME		SPECIALITIES ALUMINIUM GRILLS PVT. LTD., KANPUR	
PARTY'S DRAWING No.		AS PER AUTOCAD DRAWING-SHUTTER SECTION	
ALLOY & TEMPER		6063 T6	PRODUCT CODE:-055 HSN CODE:- 76042100
DESCRIPTION		CURTAIN WALL SECTION	
DRAWING No.		SECTION No.	
P-JAL-B-442		7000002147	
G101971		G101971	
SCALE		1:1	
AREA mm ²		619.678	
PERIMETER mm.		436.889	
WEIGHT kg/m		1.673	

	NAME	DATE
DRAWN	ASHUTOSH	08-02-2024
CHECKED	PARVESH	11-03-2024
APPROVED	J.N.RAI	11-03-2024