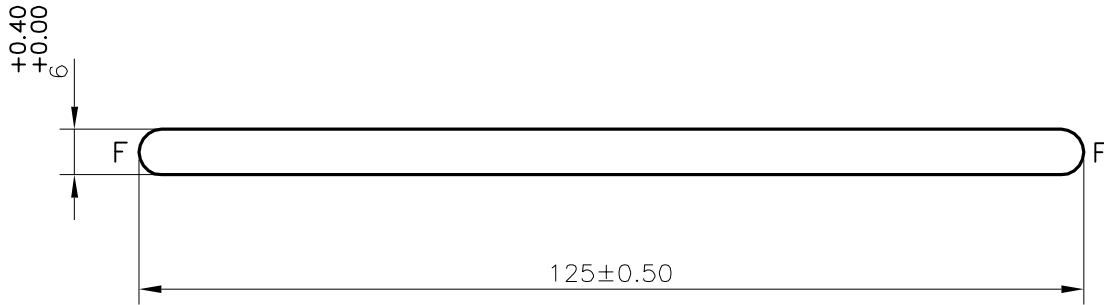


P-26987-2

G102040



SCALE 1:1


CONTROLLED COPY

PLEASE NOTE:

GODREJ WILL ACCEPT THE MATERIALS EVEN WITH TOLERANCE OF +0.50/-0.0, (ON THICKNESS) AND +0.60/-0.00MM (ON WIDTH) FOR SOME OCCASIONS. BUT IT CANNOT BE THE REGULAR PRACTICE.

F = FULL RADIUS (2 PLACES)

- 1. STRAIGHTNESS= 1.5mm/M
- 2. TWIST= 1.5mm/M
- 3. ANGULARITY= ±2°
- 4. FLATNESS= 0.007 X Width

 SYMBOL OF QUALITY AN ISO 9001 COMPANY	JINDAL ALUMINIUM LTD. BANGALORE-560073 (INDIA)		DRAWN	NAME	DATE
			CHECKED	SHRIPAD	19-03-2024
1. ALL DIMENSIONS ARE IN mm. 2. ROUND OFF ALL SHARP CORNERS WITH 0.40 mm. 3. TOLERANCES WILL BE AS PER EN 755-5, UNLESS OTHERWISE SPECIFIED			APPROVED	R.V.K	23-03-2024
			SCALE	1:1	
PARTY'S NAME GODREJ AND BOYCE MGF.CO.LTD			AREA mm ²	742.274	
			PERIMETER mm.	256.85	
PARTY'S DRAWING No. AS PER SPECIFICATIONS			WEIGHT kg/m	2.004	
			DRAWING No.	SECTION No.	
ALLOY & TEMPER 1070AF			P-26987-2	Q44000	
			G102040	G102040	
DESCRIPTION FLAT BAR WITH FULL RADIUS			PRODUCT CODE:-001		
			HSN CODE:-76042930		