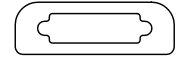
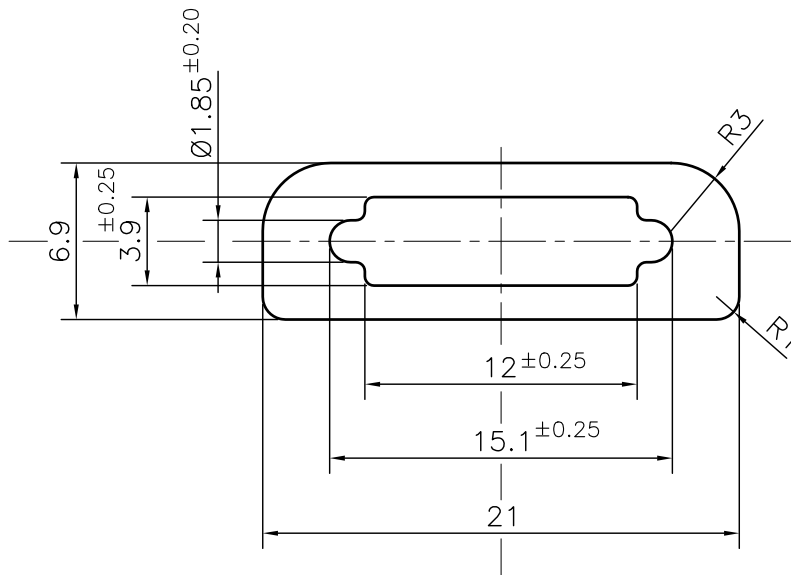


P-JAL-B-550

G102297



SCALE 1:1



TOLERANCE CHART CD = CIRCUMSCRIBING CIRCLE

DIMENSION	CD<100	100<CD<200	200<CD<300	300<CD<500
UPTO 10mm	±0.25	±0.30	±0.35	±0.40
10.0 -25.0	±0.30	±0.40	±0.50	±0.60
25.0 -50.0	±0.50	±0.60	±0.80	±0.90
50.0 -100	±0.70	±0.90	±1.10	±1.30
100 - 150	-	±1.10	±1.30	±1.50
150 - 200	-	±1.3	±1.50	±1.80
200 - 300	-	-	±1.70	±2.10
300 - 450	-	-	-	±2.80

Q01824

CONTROLLED COPY

1. STRAIGHTNESS= 1.7mm/M
2. TWIST= 1.7mm/M
3. ANGULARITY= ±2°
4. FLATNESS= 0.007xWIDTH



SYMBOL OF QUALITY  
AN ISO 9001 COMPANY

**JINDAL ALUMINIUM LTD.**  
BHIWADI-301019 (INDIA)

	NAME	DATE
DRAWN	ASHUTOSH	24-05-2024
CHECKED	PARVESH	03-06-2024
APPROVED	J.N.RAI	03-06-2024

1. ALL DIMENSIONS ARE IN mm.
2. ROUND OFF ALL SHARP CORNERS WITH 0.40 mm.
3. TOLERANCES WILL BE AS PER BS:EN-755-9 , UNLESS OTHERWISE SPECIFIED

SCALE	3:1
AREA mm <sup>2</sup>	88.807
PERIMETER mm.	52.366
WEIGHT kg/m	0.240

PARTY'S NAME YASH SEALS PRIVATE LIMITED., MUMBAI

DRAWING No. SECTION No.

PARTY'S DRAWING No. AS PER DRAWING

P-JAL-B-550 7000002473

ALLOY & TEMPER 6063 T6

PRODUCT CODE:-085  
HSN CODE:- 76042100

G102297 G102297

DESCRIPTION INDUSTRIAL SECTION  
BODY ALUMINIUM FLEXI GRIP SEAL