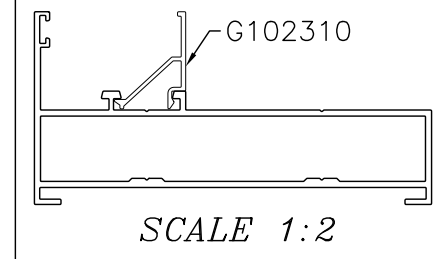
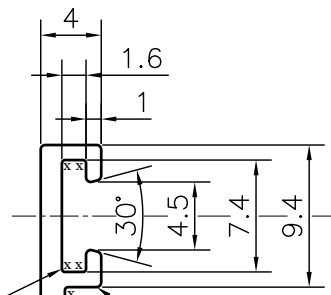


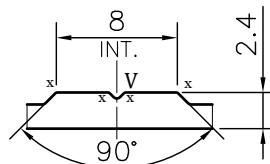
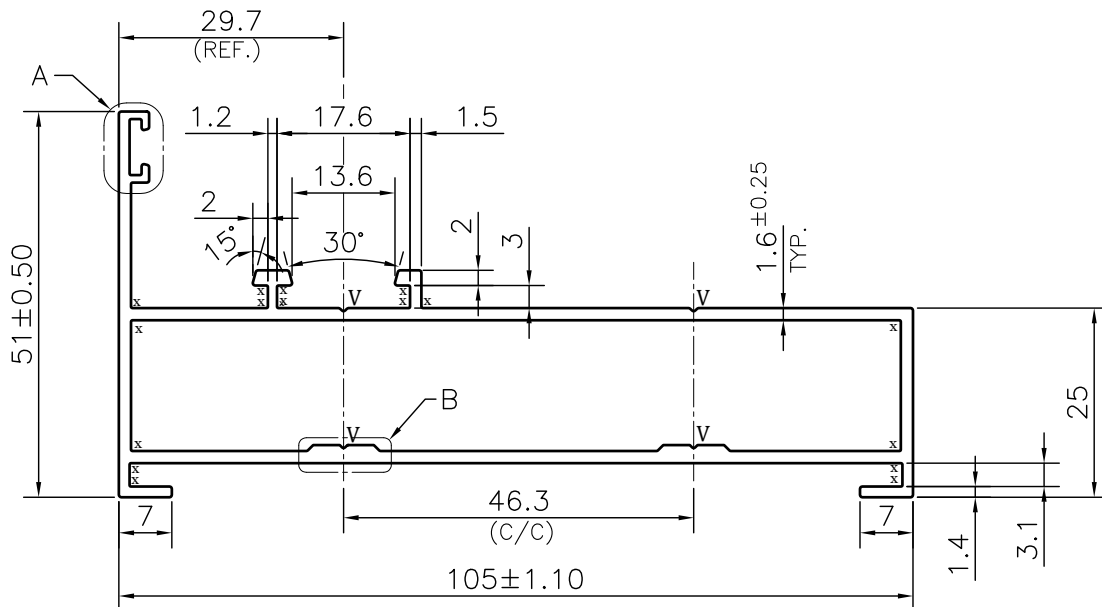
P-JAL-B-534-2

G102305



FREE EDGE 0.2 RADIUS ——— FIXED EDGE 0.3 RADIUS

**DETAIL A**  
**SCALE 2:1**



**DETAIL B**  
**SCALE 2:1**

**NOTE:-**

**x = 0.20 RADIUS (29 PLACES)**

**V = 0.40x90° V-GROOVE (4 PLACES)**

☞ ROUND OFF ALL SHARP CORNERS WITH 0.30 mm.

TOLERANCE CHART CD = CIRCUMSCRIBING CIRCLE

DIMENSION	CD ≤ 100	100 < CD ≤ 200	200 < CD ≤ 300	300 < CD ≤ 500
UPTO 10mm	±0.25	±0.30	±0.35	±0.40
10.0 - 25.0	±0.30	±0.40	±0.50	±0.60
25.0 - 50.0	±0.50	±0.60	±0.80	±0.90
50.0 - 100	±0.70	±0.90	±1.10	±1.30
100 - 150	-	±1.10	±1.30	±1.50
150 - 200	-	±1.3	±1.50	±1.80
200 - 300	-	-	±1.70	±2.10
300 - 450	-	-	-	±2.80

Q01845

CONTROLLED COPY

1. STRAIGHTNESS= 1.7mm/M
2. TWIST= 1.7mm/M
3. ANGULARITY= ±2°
4. FLATNESS= 0.007xWIDTH



SYMBOL OF QUALITY  
AN ISO 9001 COMPANY

**JINDAL ALUMINIUM LTD.**  
**BHIWADI-301019 (INDIA)**

	NAME	DATE
DRAWN	ASHUTOSH	27-05-2024
CHECKED	PARVESH	06-06-2024
APPROVED	J.N.RAI	08-06-2024

1. ALL DIMENSIONS ARE IN mm.
2. ROUND OFF ALL SHARP CORNERS WITH 0.30 mm.
3. TOLERANCES WILL BE AS PER BS:EN-755-9 , UNLESS OTHERWISE SPECIFIED

SCALE	1:1
AREA mm <sup>2</sup>	504.606
PERIMETER mm.	386.433
WEIGHT kg/m	1.362

PARTY'S NAME	GO ALUBUILD PVT. LTD, BAWAL	
PARTY'S DRAWING No.	AS PER PROPOSAL DRAWING	
ALLOY & TEMPER	6063 T6	PRODUCT CODE:-048
		HSN CODE:- 76042100
DESCRIPTION	WINDOW SECTION-OUTER FRAME-R1	

DRAWING No.	SECTION No.
P-JAL-B-534-2	7000002480
G102305	G102305