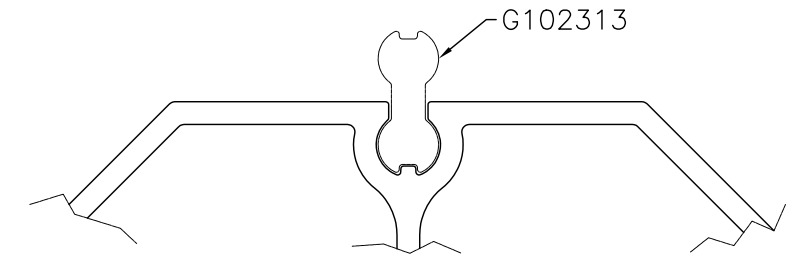
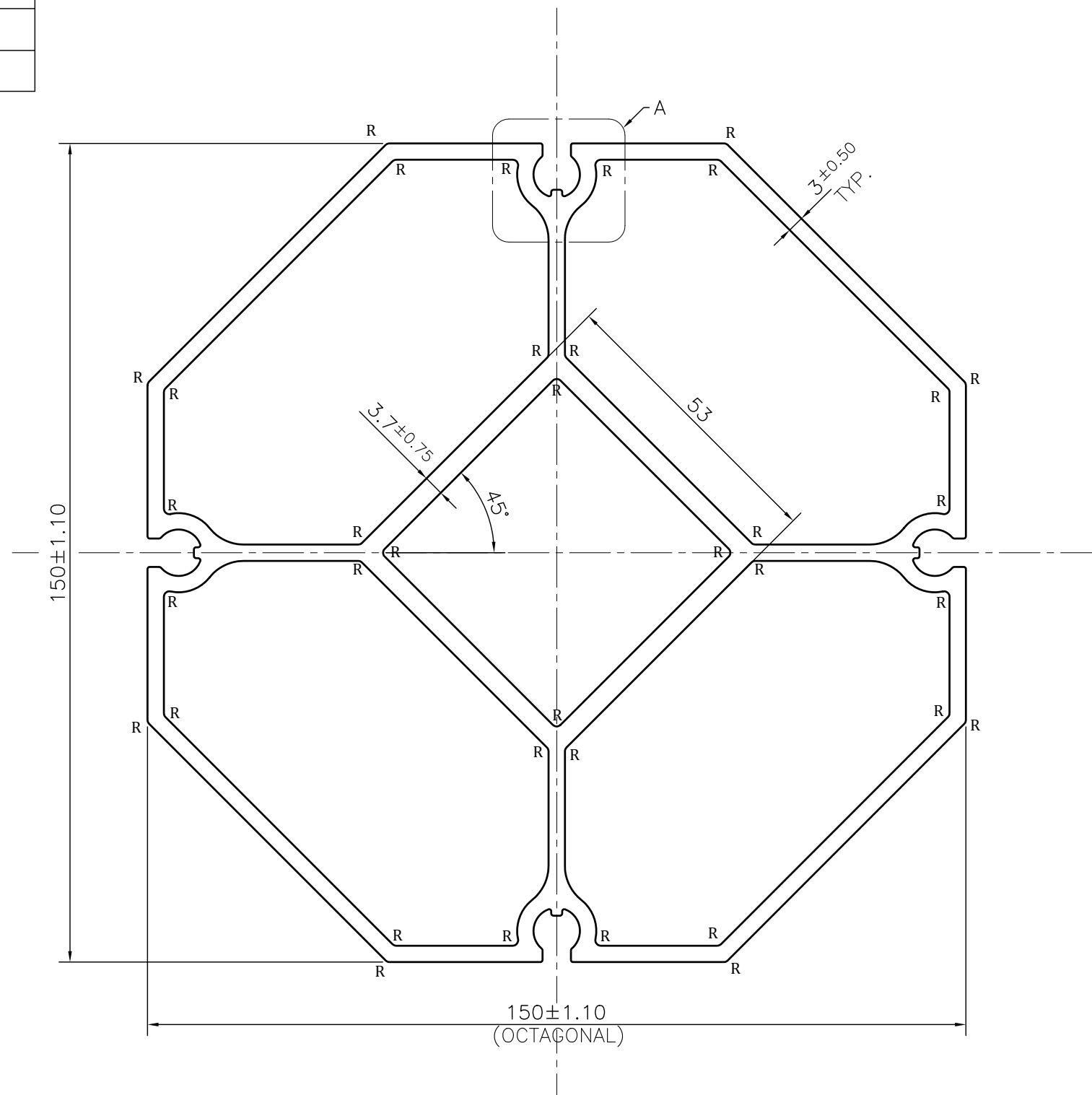
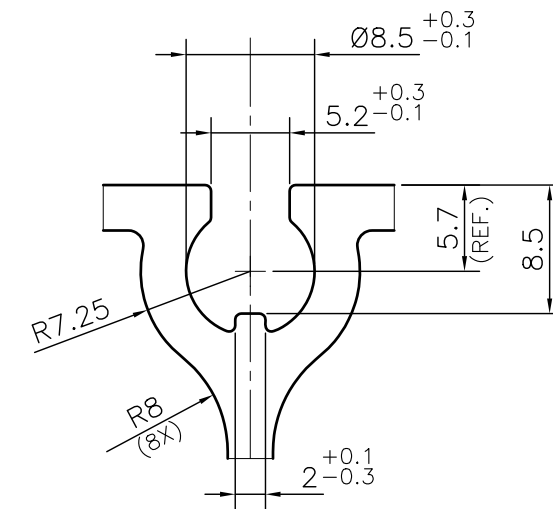


P-JAL-B-486

G102314



MATCHING
SCALE 1:1




DETAIL A
SCALE 2:1

NOTE:-
R= 1.0 RADIUS (36 PLACES)

1. STRAIGHTNESS= 1.7mm/M
2. TWIST= 1.7mm/M
3. ANGULARITY= ±2°
4. FLATNESS= 0.007xWIDTH

Q01592

CONTROLLED COPY

 SYMBOL OF QUALITY AN ISO 9001 COMPANY	JINDAL ALUMINIUM LTD. BHIWADI-301019 (INDIA)		NAME	DATE	
			DRAWN	ASHUTOSH	06-05-2024
1. ALL DIMENSIONS ARE IN mm. 2. ROUND OFF ALL SHARP CORNERS WITH 0.40 mm. 3. TOLERANCES WILL BE AS PER BS:EN-755-9, UNLESS OTHERWISE SPECIFIED			CHECKED	PARVESH	06-06-2024
			APPROVED	J.N.RAI	06-06-2024
PARTY'S NAME AASTHA ALUMINA (P) LIMITED, GURUGRAM			SCALE	1:1	
			AREA mm ²	2756.218	
PARTY'S DRAWING No. AS PER PROPOSAL DRAWING- AA-EE-AJ-01			PERIMETER mm.	583.953	
			WEIGHT kg/m	7.442	
ALLOY & TEMPER 6063 T6			DRAWING No.	SECTION No.	
			P-JAL-B-486	7000002476	
DESCRIPTION ARCHITECTURAL MISC. SECTION			G102314	G102314	
			PRODUCT CODE:-056		
			HSN CODE:- 76042100		

TOLERANCE CHART CD = CIRCUMSCRIBING CIRCLE

DIMENSION	CD ≤ 100	100 < CD ≤ 200	200 < CD ≤ 300	300 < CD ≤ 500
UPTO 10mm	±0.25	±0.30	±0.35	±0.40
10.0 - 25.0	±0.30	±0.40	±0.50	±0.60
25.0 - 50.0	±0.50	±0.60	±0.80	±0.90
50.0 - 100	±0.70	±0.90	±1.10	±1.30
100 - 150	-	±1.10	±1.30	±1.50
150 - 200	-	±1.3	±1.50	±1.80
200 - 300	-	-	±1.70	±2.10
300 - 450	-	-	-	±2.80