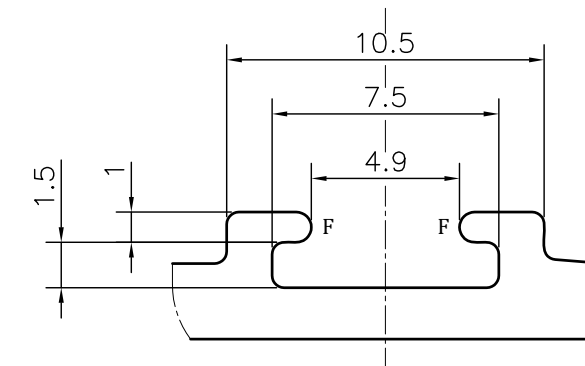
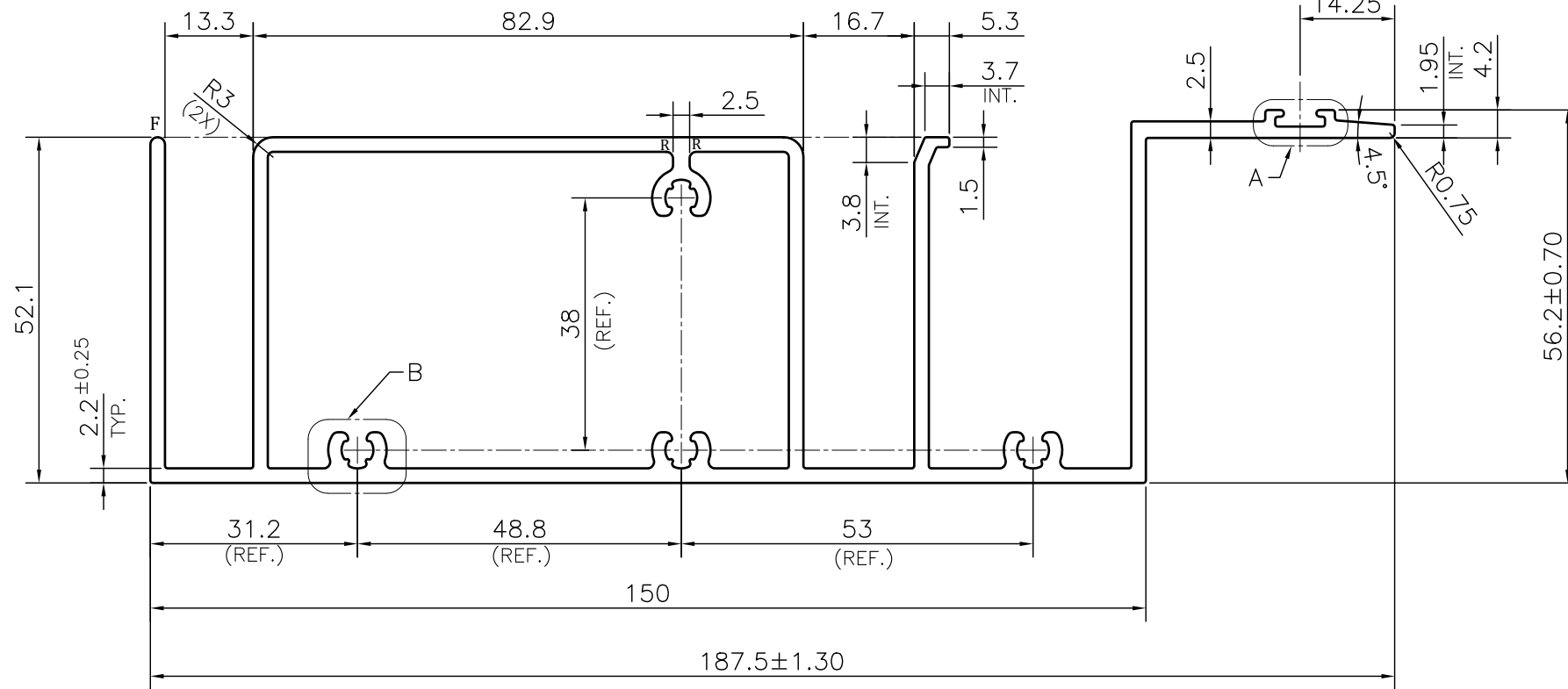
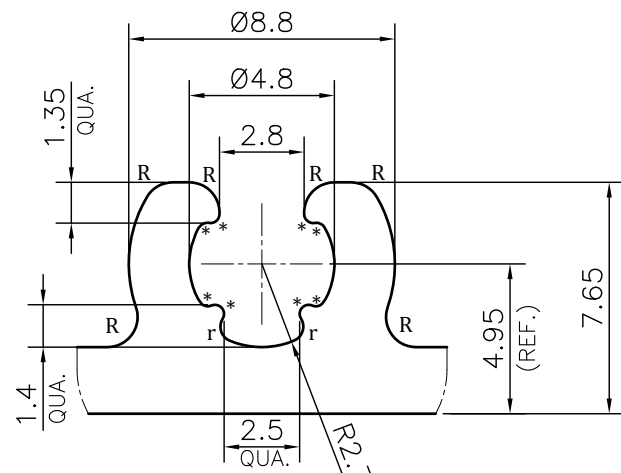


P-JAL-B-566

G102319



DETAIL A
SCALE 4:1




DETAIL B
SCALE 4:1

NOTE:-
R= 1.0 RADIUS (26 PLACES)
r= 0.50 RADIUS (8 PLACES)
***= 0.30 RADIUS (32 PLACES)**
F= FULL RADIUS (2 PLACES)

1. STRAIGHTNESS= 1.7mm/M
2. TWIST= 1.7mm/M
3. ANGULARITY= ±2°
4. FLATNESS= 0.007xWIDTH

Q01905

CONTROLLED COPY

 SYMBOL OF QUALITY AN ISO 9001 COMPANY	JINDAL ALUMINIUM LTD. BHIWADI-301019 (INDIA)		NAME	DATE
	DRAWN CHECKED APPROVED	ASHUTOSH PARVESH J.N.RAI	31-05-2024 08-06-2024 08-06-2024	
1. ALL DIMENSIONS ARE IN mm. 2. ROUND OFF ALL SHARP CORNERS WITH 0.40 mm. 3. TOLERANCES WILL BE AS PER BS:EN-755-9 , UNLESS OTHERWISE SPECIFIED			SCALE	1:1
			AREA mm ²	1266.721
			PERIMETER mm.	812.748
			WEIGHT kg/m	3.420
PARTY'S NAME	K.S.V INFRABUILD, GRATER NOIDA		DRAWING No.	SECTION No.
PARTY'S DRAWING No.	AS PER CAD DRAWING-KSV_OPUS_01		P-JAL-B-566	7000002489
ALLOY & TEMPER	6063 T6	PRODUCT CODE:-055	G102319	G102319
DESCRIPTION	CURTAIN WALL SECTION			
		HSN CODE:- 76042100		

TOLERANCE CHART CD = CIRCUMSCRIBING CIRCLE

DIMENSION	CD≤100	100<CD≤200	200<CD≤300	300<CD≤500
UPTO 10mm	±0.25	±0.30	±0.35	±0.40
10.0 - 25.0	±0.30	±0.40	±0.50	±0.60
25.0 - 50.0	±0.50	±0.60	±0.80	±0.90
50.0 - 100	±0.70	±0.90	±1.10	±1.30
100 - 150	-	±1.10	±1.30	±1.50
150 - 200	-	±1.3	±1.50	±1.80
200 - 300	-	-	±1.70	±2.10
300 - 450	-	-	-	±2.80