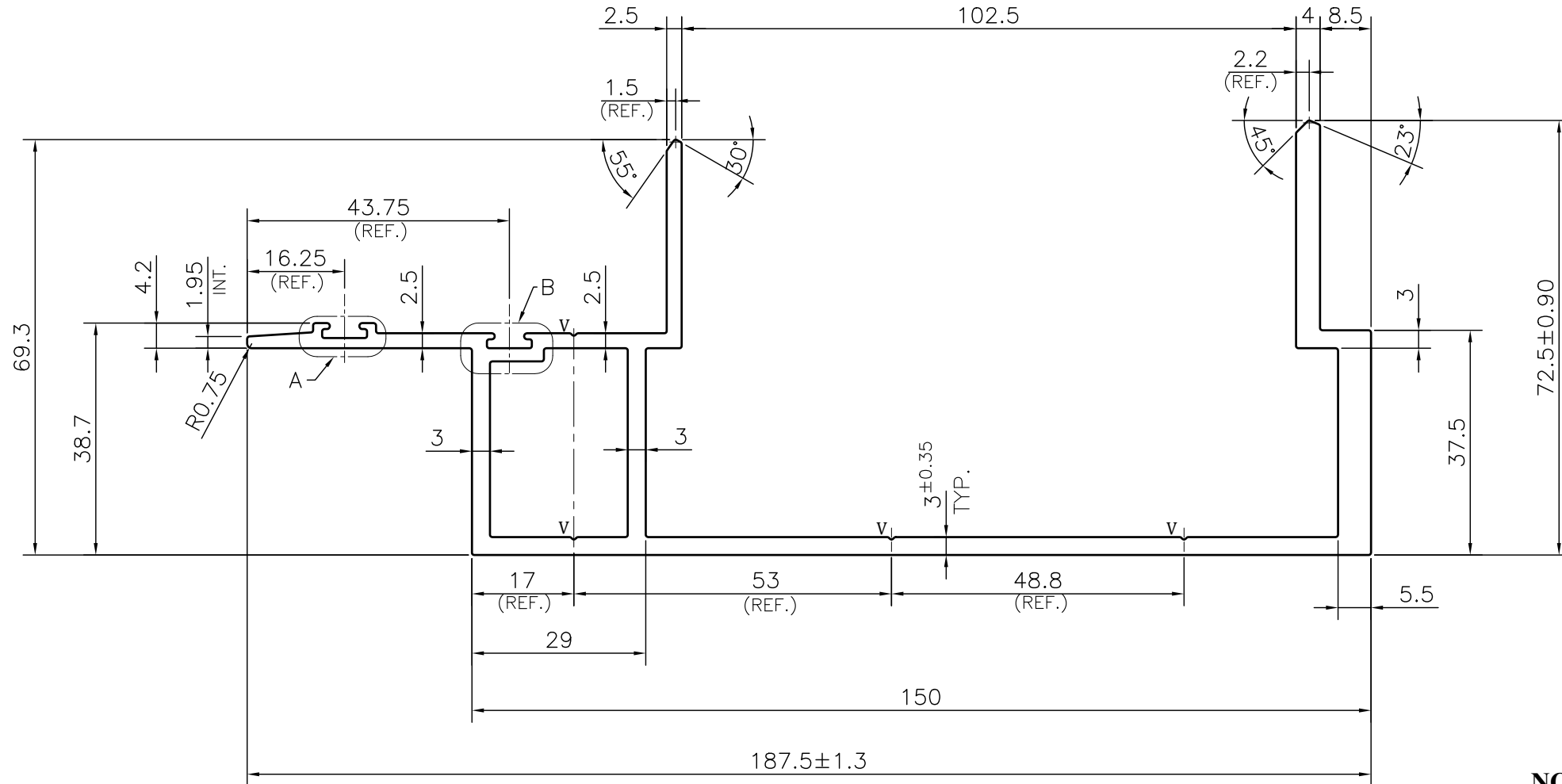
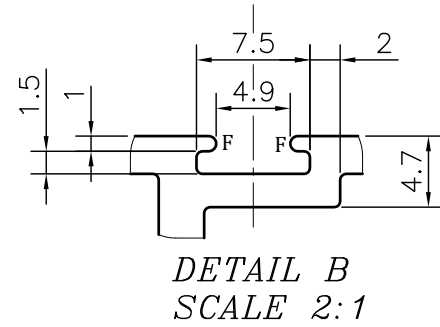
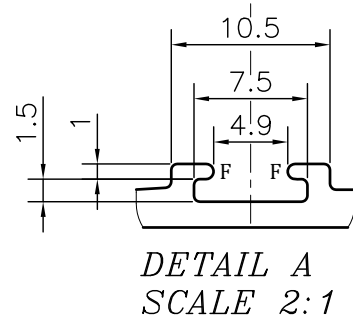


P-JAL-B-569-1

G102322



**NOTE:-**  
**F= FULL RADIUS (4 PLACES)**  
**V= 0.4x90° V-GROOVE (4 PLACES)**

1. STRAIGHTNESS= 1.7mm/M
2. TWIST= 1.7mm/M
3. ANGULARITY= ±2°
4. FLATNESS= 0.007xWIDTH

Q01908

CONTROLLED COPY



SYMBOL OF QUALITY  
AN ISO 9001 COMPANY

**JINDAL ALUMINIUM LTD.**  
 BHIWADI-301019 (INDIA)

1. ALL DIMENSIONS ARE IN mm.
2. ROUND OFF ALL SHARP CORNERS WITH 0.40 mm.
3. TOLERANCES WILL BE AS PER BS:EN-755-9 , UNLESS OTHERWISE SPECIFIED

TOLERANCE CHART CD = CIRCUMSCRIBING CIRCLE

DIMENSION	CD≤100	100<CD≤200	200<CD≤300	300<CD≤500
UPTO 10mm	±0.25	±0.30	±0.35	±0.40
10.0 - 25.0	±0.30	±0.40	±0.50	±0.60
25.0 - 50.0	±0.50	±0.60	±0.80	±0.90
50.0 - 100	±0.70	±0.90	±1.10	±1.30
100 - 150	-	±1.10	±1.30	±1.50
150 - 200	-	±1.3	±1.50	±1.80
200 - 300	-	-	±1.70	±2.10
300 - 450	-	-	-	±2.80

PARTY'S NAME	K.S.V INFRABUILD, GRATER NOIDA	SCALE	1:1
PARTY'S DRAWING No.	AS PER CAD DRAWING-KSV_OPUS_04	AREA mm <sup>2</sup>	1249.482
ALLOY & TEMPER	6063 T6	PERIMETER mm.	693.004
DESCRIPTION	CURTAIN WALL SECTION	WEIGHT kg/m	3.374
		DRAWING No.	SECTION No.
		P-JAL-B-569-1	7000002502
		G102322	G102322
		PRODUCT CODE:-055	
		HSN CODE:- 76042100	