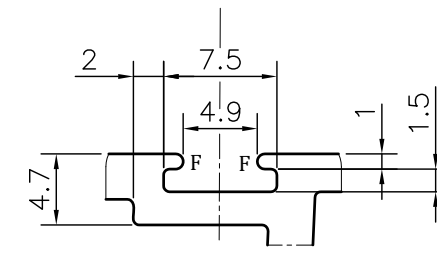
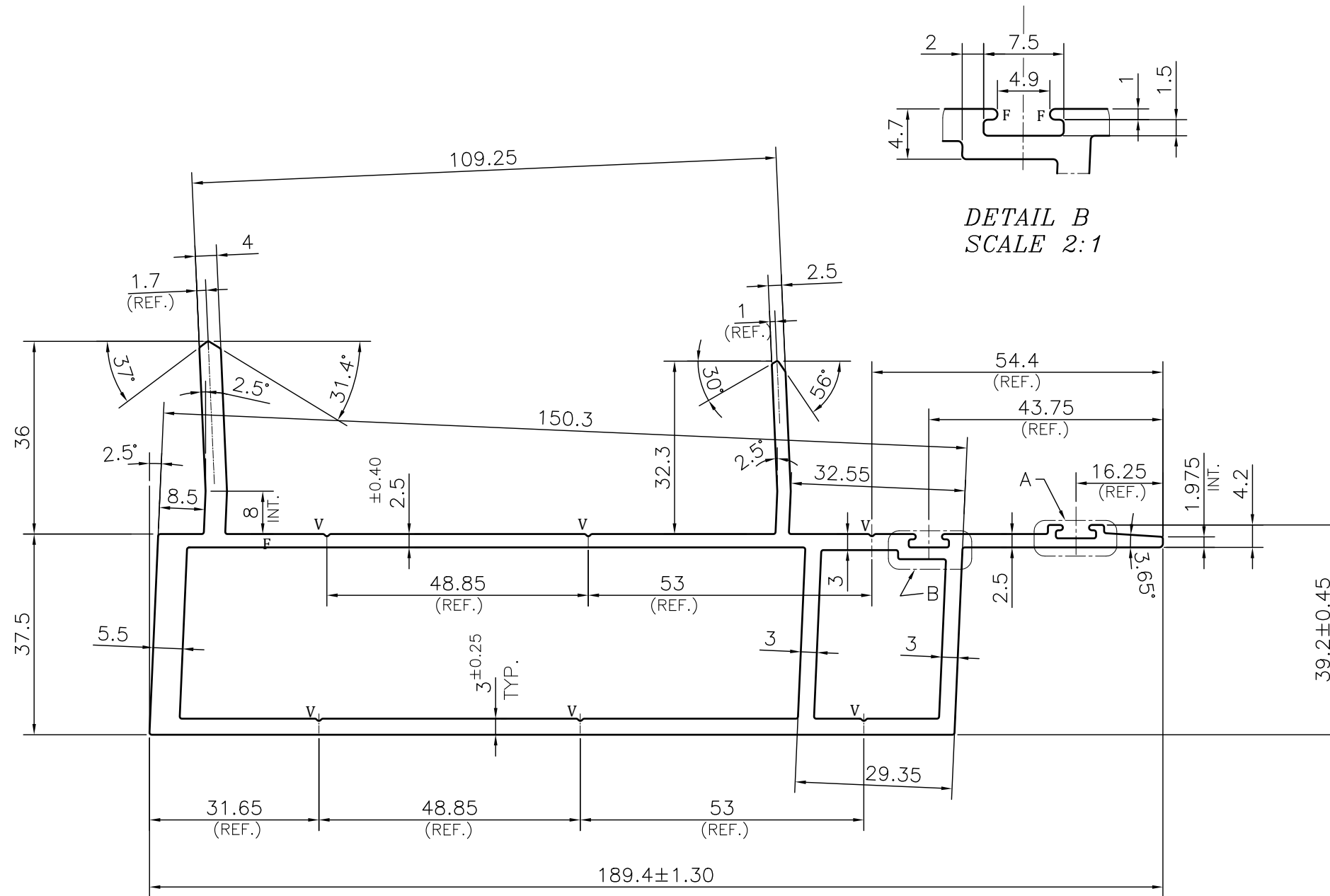
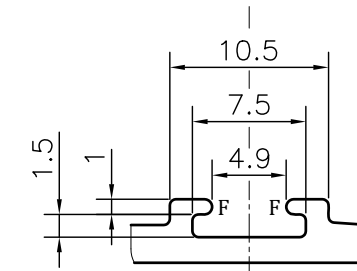


P-JAL-B-571-1

G102324



DETAIL B  
SCALE 2:1



DETAIL A  
SCALE 2:1

**NOTE:-**  
**F= FULL RADIUS (4 PLACES)**  
**V= 0.4x90° V-GROOVE (6 PLACES)**

1. STRAIGHTNESS= 1.7mm/M
2. TWIST= 1.7mm/M
3. ANGULARITY= ±2°
4. FLATNESS= 0.007xWIDTH

Q01910

CONTROLLED COPY



SYMBOL OF QUALITY  
AN ISO 9001 COMPANY

**JINDAL ALUMINIUM LTD.**  
BHIWADI-301019 (INDIA)

1. ALL DIMENSIONS ARE IN mm.
2. ROUND OFF ALL SHARP CORNERS WITH 0.40 mm.
3. TOLERANCES WILL BE AS PER BS:EN-755-9 , UNLESS OTHERWISE SPECIFIED

PARTY'S NAME K.S.V INFRABUILD, GRATER NOIDA

PARTY'S DRAWING No. AS PER CAD DRAWING-KSV\_OPUS\_06

ALLOY & TEMPER 6063 T6 PRODUCT CODE:-055  
HSN CODE:- 76042100

DESCRIPTION CURTAIN WALL SECTION

	NAME	DATE
DRAWN	S.K.SHARMA	03-06-2024
CHECKED	PARVESH	08-06-2024
APPROVED	J.N.RAI	08-06-2024
SCALE	1:1	
AREA	mm <sup>2</sup>	1519.169
PERIMETER	mm.	602.634
WEIGHT	kg/m	4.102
DRAWING No.	SECTION No.	
P-JAL-B-571-1	7000002504	
G102324	G102324	

TOLERANCE CHART CD = CIRCUMSCRIBING CIRCLE

DIMENSION	CD<100	100<CD<200	200<CD<300	300<CD<500
UPTO 10mm	±0.25	±0.30	±0.35	±0.40
10.0 - 25.0	±0.30	±0.40	±0.50	±0.60
25.0 - 50.0	±0.50	±0.60	±0.80	±0.90
50.0 - 100	±0.70	±0.90	±1.10	±1.30
100 - 150	-	±1.10	±1.30	±1.50
150 - 200	-	±1.3	±1.50	±1.80
200 - 300	-	-	±1.70	±2.10
300 - 450	-	-	-	±2.80