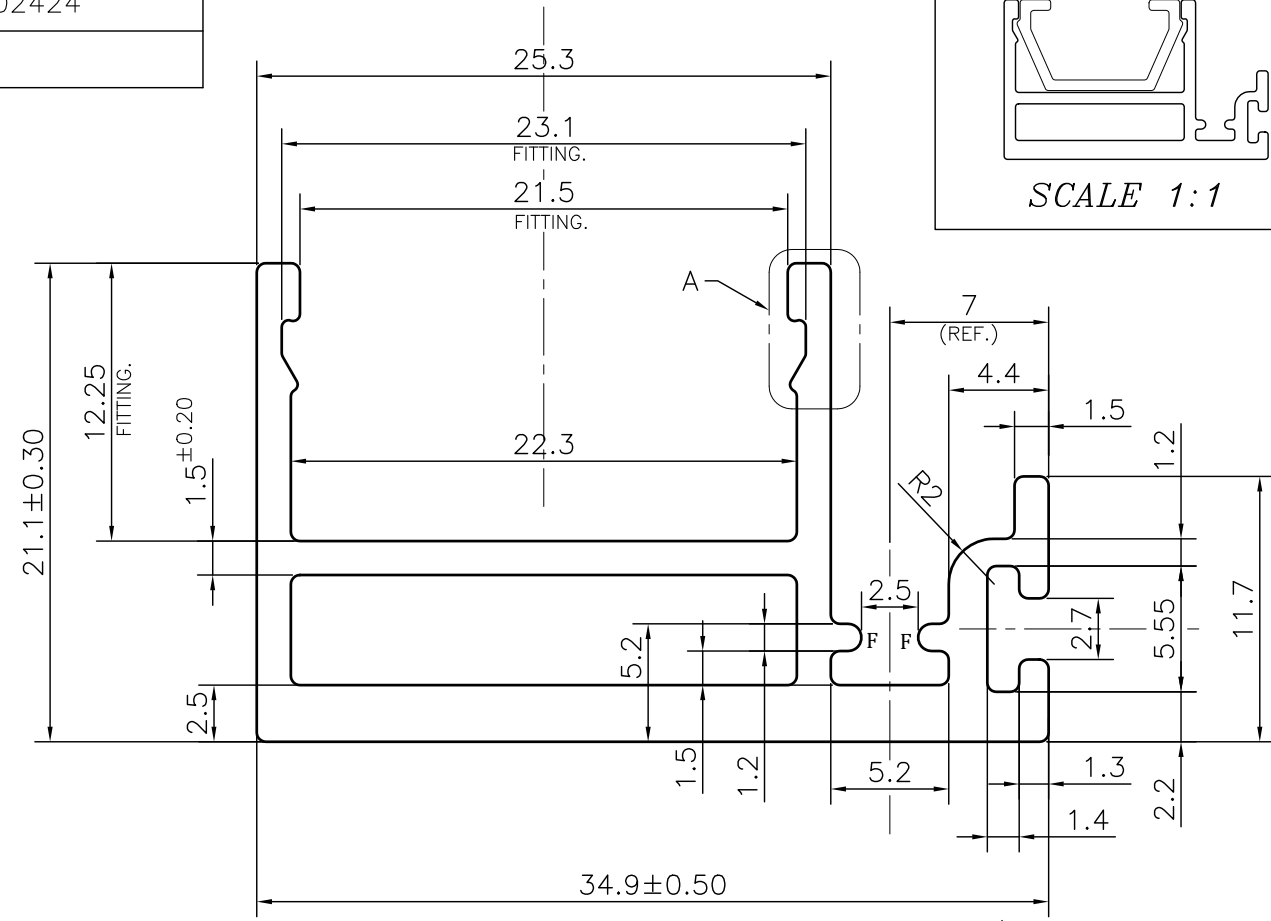
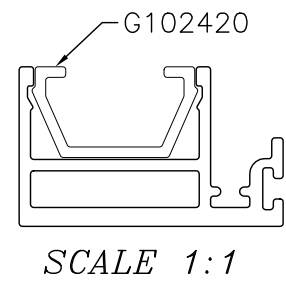
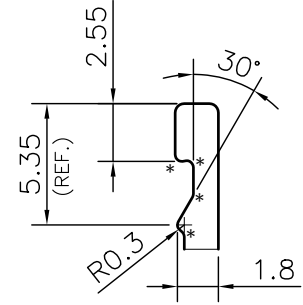


P-JAL-B-563-1  
G102424



**NOTE:-**  
**F= FULL RADIUS (2 PLACES)**  
**\*= 0.30 RADIUS (8 PLACES)**



DETAIL A  
SCALE 3:1

TOLERANCE CHART CD = CIRCUMSCRIBING CIRCLE

DIMENSION	CD<100	100<CD<200	200<CD<300	300<CD<500
UPTO 10mm	±0.25	±0.30	±0.35	±0.40
10.0 -25.0	±0.30	±0.40	±0.50	±0.60
25.0 -50.0	±0.50	±0.60	±0.80	±0.90
50.0 -100	±0.70	±0.90	±1.10	±1.30
100 - 150	-	±1.10	±1.30	±1.50
150 - 200	-	±1.3	±1.50	±1.80
200 - 300	-	-	±1.70	±2.10
300 - 450	-	-	-	±2.80

Q01831  
CONTROLLED COPY

1. STRAIGHTNESS= 1.7mm/M
2. TWIST= 1.7mm/M
3. ANGULARITY= ±2°
4. FLATNESS= 0.007xWIDTH

<p>SYMBOL OF QUALITY AN ISO 9001 COMPANY</p>	<p><b>JINDAL ALUMINIUM LTD.</b> BHIWADI-301019 (INDIA)</p>		NAME	DATE
			DRAWN	ASHUTOSH 05-06-2024
<p>1. ALL DIMENSIONS ARE IN mm. 2. ROUND OFF ALL SHARP CORNERS WITH 0.40 mm. 3. TOLERANCES WILL BE AS PER BS:EN-755-9 , UNLESS OTHERWISE SPECIFIED</p>		CHECKED	PARVESH 02-07-2024	
		APPROVED	N.K.HOLEY 03-07-2024	
<p>PARTY'S NAME</p> <p>WINDOOR TECH, GURUGRAM</p>		SCALE		3:1
		AREA mm <sup>2</sup>		200.859
<p>PARTY'S DRAWING No.</p> <p>AS PER DRAWING (AS PER CUSTOMER REQUIREMENT)</p>		PERIMETER mm.		167.759
		WEIGHT kg/m		0.542
<p>ALLOY &amp; TEMPER</p> <p>6063 T6</p>		DRAWING No.		P-JAL-B-563-1
		SECTION No.		7000002605
<p>DESCRIPTION</p> <p>WINDOW SECTION-SMALL INTERLOCK</p>		PRODUCT CODE:-048		G102424
		HSN CODE:- 76042100		G102424