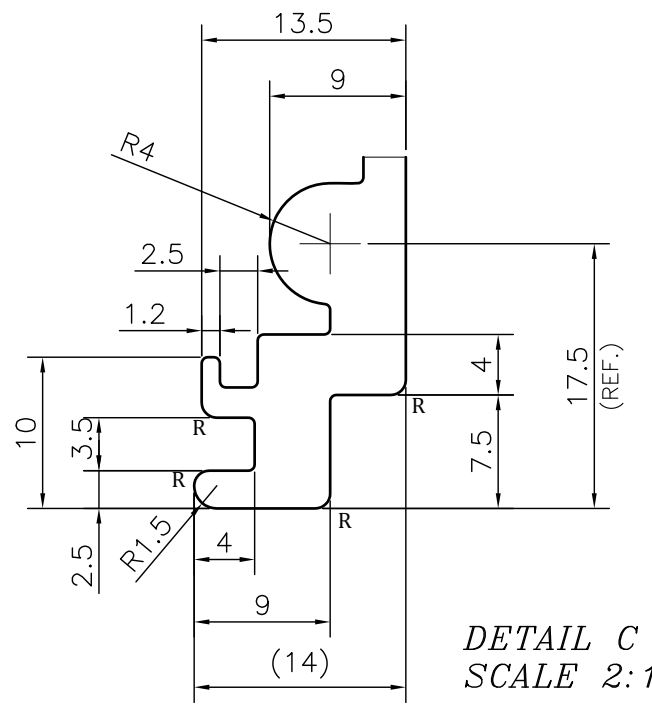
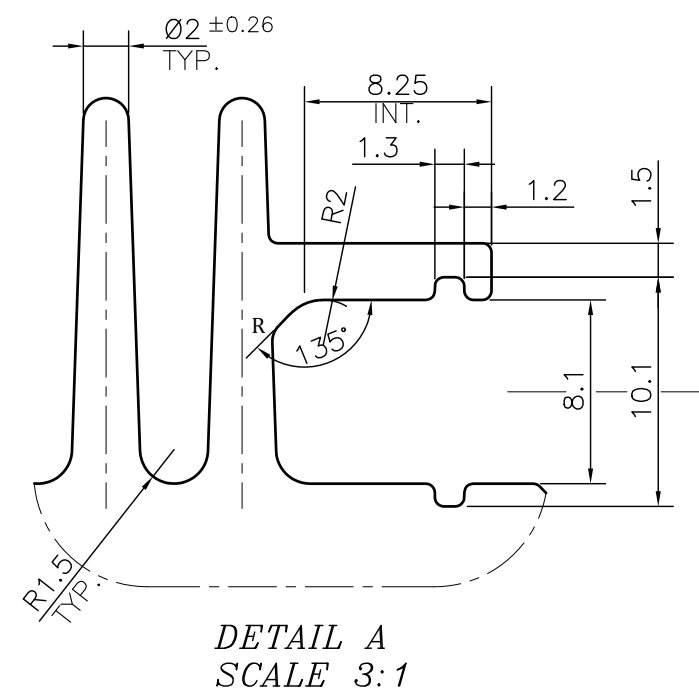
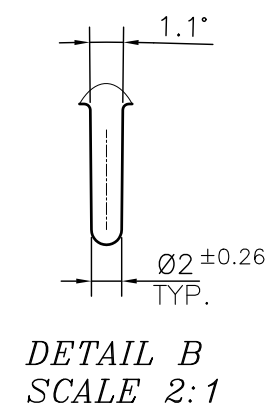
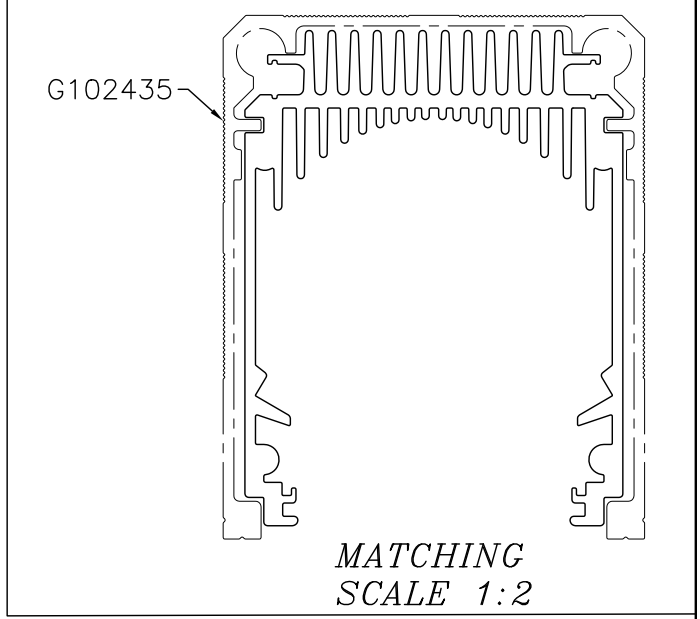
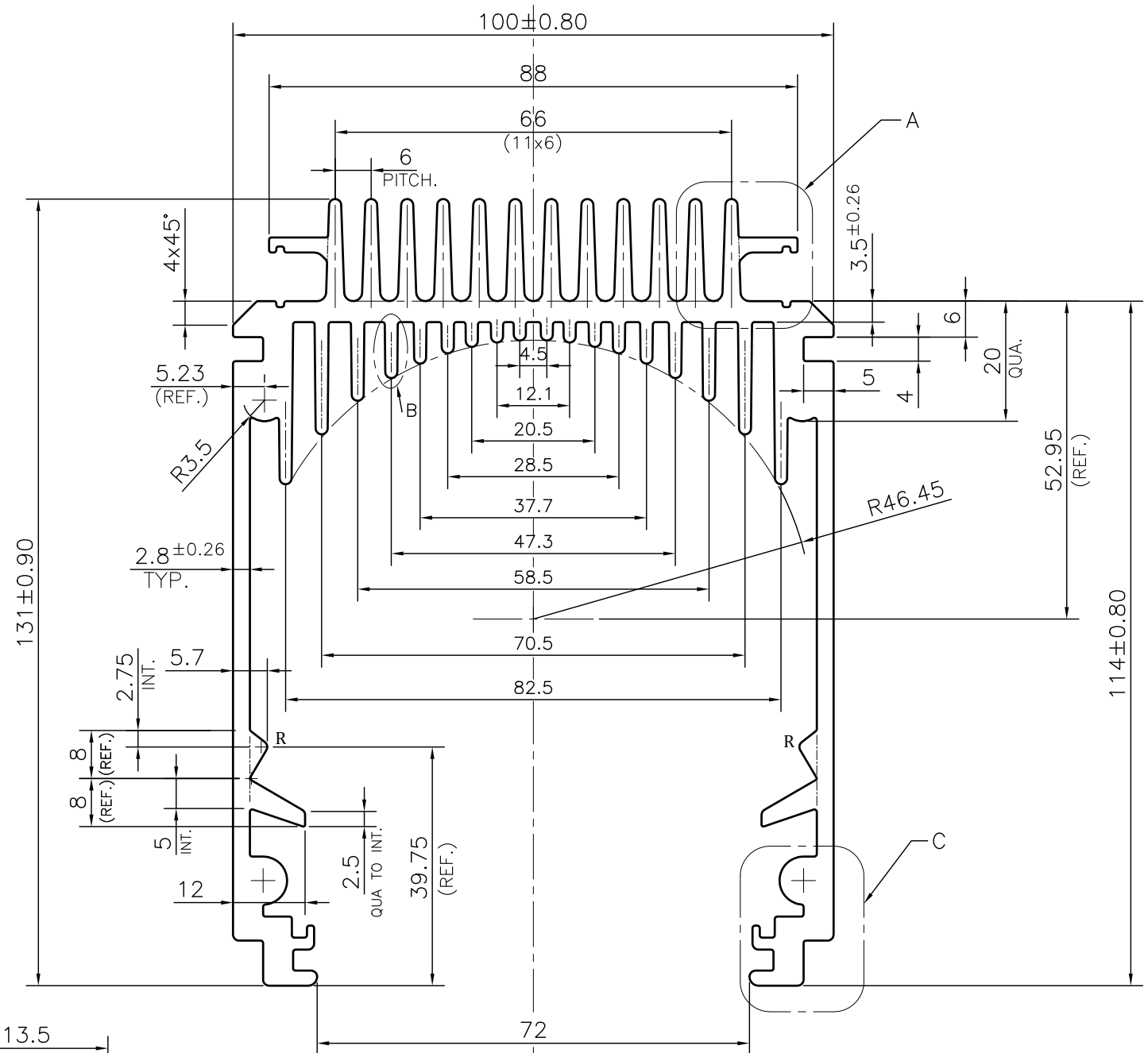


P-JAL-B-608
G102434



TOLERANCE CHART CD = CIRCUMSCRIBING CIRCLE

DIMENSION	CD≤100	100<CD≤200	200<CD≤300	300<CD≤500
UPTO 10mm	±0.25	±0.30	±0.35	±0.40
10.0 - 25.0	±0.30	±0.40	±0.50	±0.60
25.0 - 50.0	±0.50	±0.60	±0.80	±0.90
50.0 - 100	±0.70	±0.90	±1.10	±1.30
100 - 150	-	±1.10	±1.30	±1.50
150 - 200	-	±1.3	±1.50	±1.80
200 - 300	-	-	±1.70	±2.10
300 - 450	-	-	-	±2.80

NOTE:-
R= 1.0 RADIUS (12 PLACES)

1. STRAIGHTNESS= 1.7mm/M
2. TWIST= 1.7mm/M
3. ANGULARITY= ±2°
4. FLATNESS= 0.007xWIDTH

Q01427

CONTROLLED COPY

 SYMBOL OF QUALITY AN ISO 9001 COMPANY	JINDAL ALUMINIUM LTD. BHIWADI-301019 (INDIA)	
	PARTY'S NAME	UV GRAPHIC
PARTY'S DRAWING No.	AS PER PROPOSAL DRAWING	
ALLOY & TEMPER	6063 T6	PRODUCT CODE:-081 HSN CODE:- 76042990
DESCRIPTION	HEAT SINK SECTION	

	NAME	DATE
DRAWN	ASHUTOSH	20-06-2024
CHECKED	PARVESH	02-07-2024
APPROVED	N.K.HOLEY	03-07-2024
SCALE	1:1	
AREA	mm ²	2328.07
PERIMETER	mm.	1456.01
WEIGHT	kg/m	6.286
DRAWING No.	SECTION No.	
P-JAL-B-608	7000002611	
G102434	G102434	