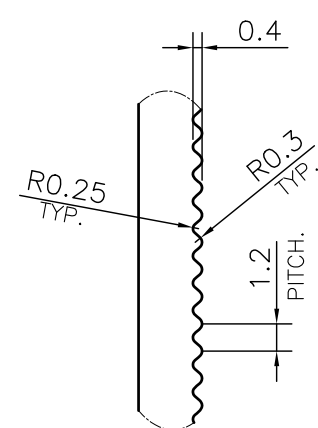
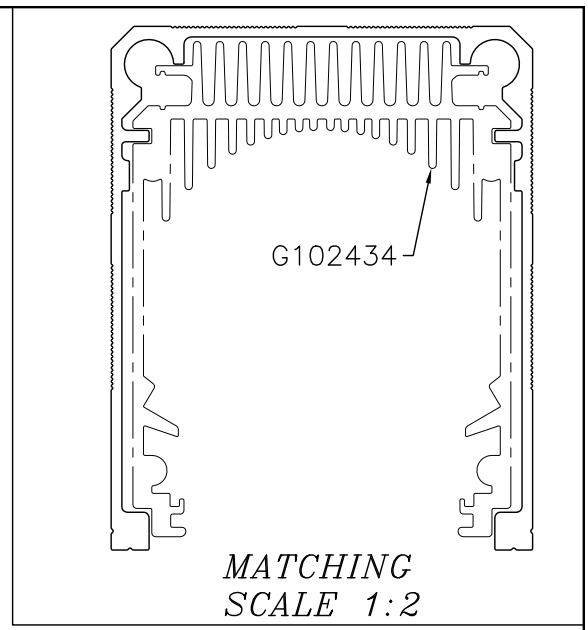
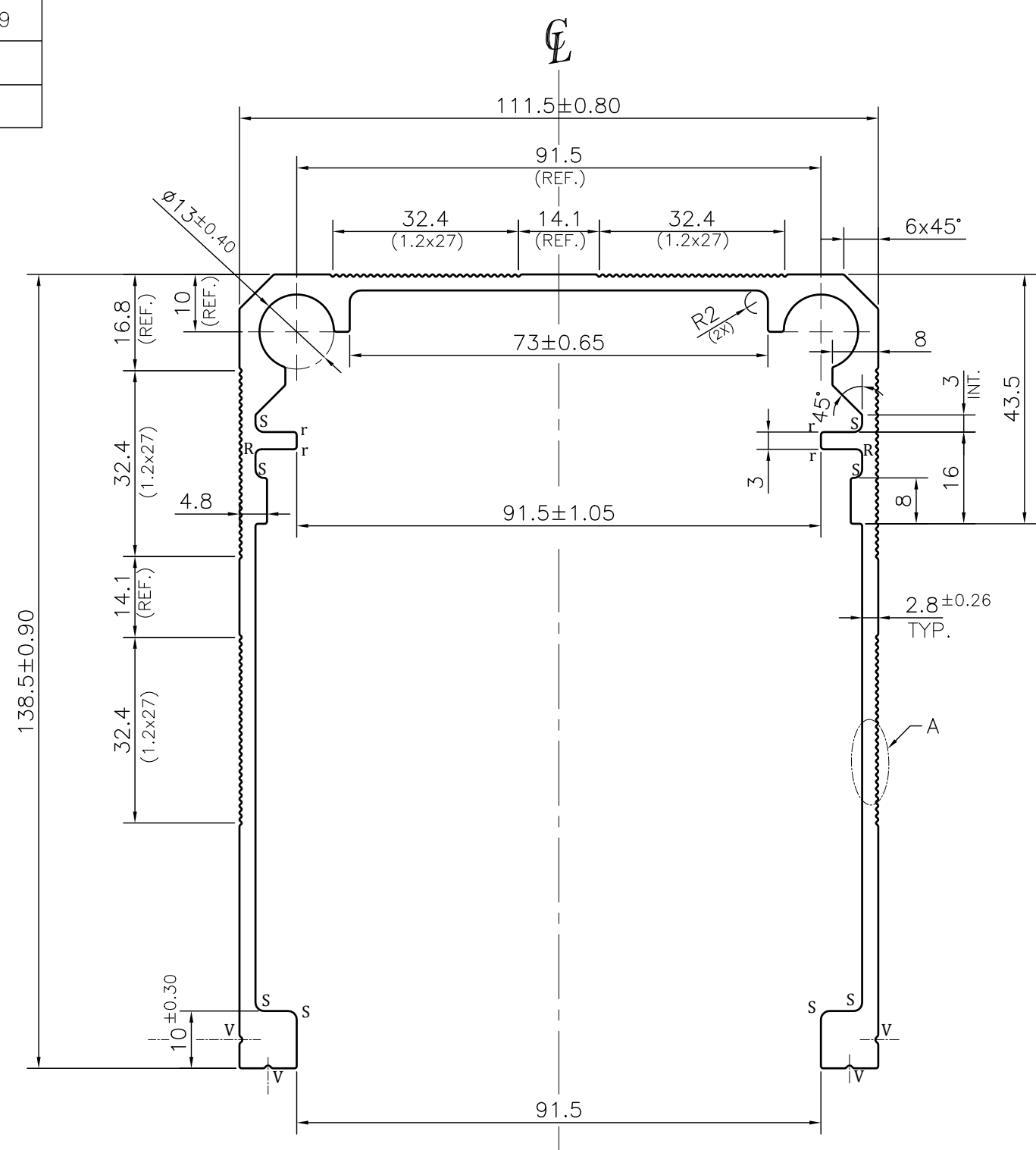


P-JAL-B-609
G102435



DETAIL A
SCALE 3:1

NOTE:-
r= 0.50 RADIUS (4 PLACES)
R= 1.0 RADIUS (2 PLACES)
S= 1.50 RADIUS (8 PLACES)
V= 0.40x90° V-GROOVE (4 PLACES)

1. STRAIGHTNESS= 1.7mm/M
2. TWIST= 1.7mm/M
3. ANGULARITY= ±2°
4. FLATNESS= 0.007xWIDTH

Q01428

CONTROLLED COPY

 SYMBOL OF QUALITY AN ISO 9001 COMPANY	JINDAL ALUMINIUM LTD. BHIWADI-301019 (INDIA)		NAME	DATE	
			DRAWN	ASHUTOSH	20-06-2024
1. ALL DIMENSIONS ARE IN mm. 2. ROUND OFF ALL SHARP CORNERS WITH 0.40 mm. 3. TOLERANCES WILL BE AS PER BS:EN-755-9 , UNLESS OTHERWISE SPECIFIED			CHECKED	PARVESH	02-07-2024
			APPROVED	N.K.HOLEY	03-07-2024
PARTY'S NAME UV GRAPHIC			SCALE	1:1	
			AREA mm ²	1405.062	
PARTY'S DRAWING No. AS PER DRAWING-SP-8228-R-1			PERIMETER mm.	892.47	
			WEIGHT kg/m	3.794	
ALLOY & TEMPER 6063 T6			DRAWING No.	SECTION No.	
			PRODUCT CODE:-081		
DESCRIPTION HEAT SINK SECTION			P-JAL-B-609	7000002612	
			G102435	G102435	
HSN CODE:- 76042990					

TOLERANCE CHART CD = CIRCUMSCRIBING CIRCLE

DIMENSION	CD≤100	100<CD≤200	200<CD≤300	300<CD≤500
UPTO 10mm	±0.25	±0.30	±0.35	±0.40
10.0 - 25.0	±0.30	±0.40	±0.50	±0.60
25.0 - 50.0	±0.50	±0.60	±0.80	±0.90
50.0 - 100	±0.70	±0.90	±1.10	±1.30
100 - 150	-	±1.10	±1.30	±1.50
150 - 200	-	±1.3	±1.50	±1.80
200 - 300	-	-	±1.70	±2.10
300 - 450	-	-	-	±2.80