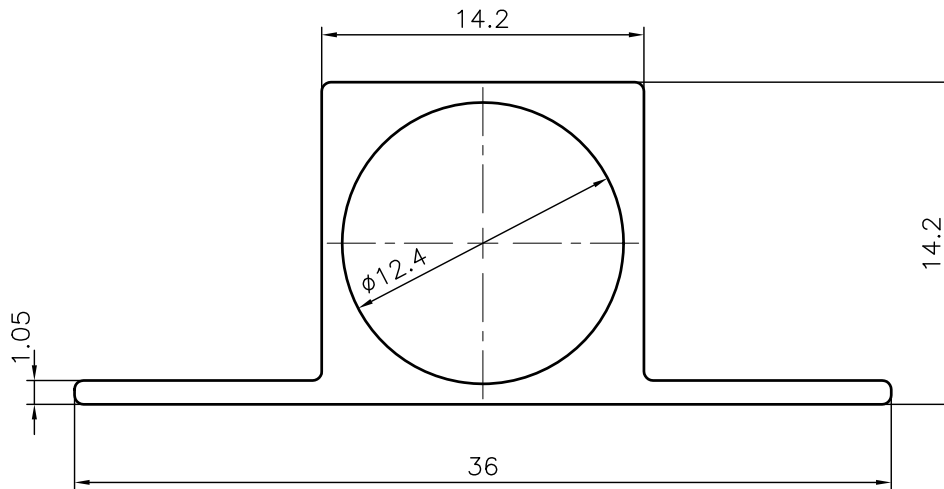
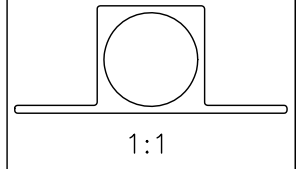


P-JAL-B-633

G102509



SECTION	EXISTING WEIGHT/12 FEET	NEW WEIGHT/12 FEET
18122	1.156	1.024

Q01859

CONTROLLED COPY



SYMBOL OF QUALITY  
AN ISO 9001 COMPANY

**JINDAL ALUMINIUM LTD.**  
BHIWADI-301019 (INDIA)

	NAME	DATE
DRAWN	ASHUTOSH	28-06-2024
CHECKED	PARVESH	24-07-2024
APPROVED	J.N.RAI	25-07-2024

- ALL DIMENSIONS ARE IN mm.
- ROUND OFF ALL SHARP CORNERS WITH 0.40 mm.
- TOLERANCES WILL BE AS PER IS:6477-1983 UNLESS OTHERWISE SPECIFIED

SCALE	3:1
AREA mm <sup>2</sup>	103.63
PERIMETER mm.	99.027
WEIGHT kg/m	0.280

PARTY'S NAME	GENERAL CATEGORY, DELHI MARKET	DRAWING No.	SECTION No.
PARTY'S DRAWING No.	LIGHTER SECTION OF 18122	P-JAL-B-633	7000002703
ALLOY & TEMPER	HE9 WP A3D	G102509	G102509
DESCRIPTION	TOWER BOLT	PRODUCT CODE:-030	
		HSN CODE:- 76042100	