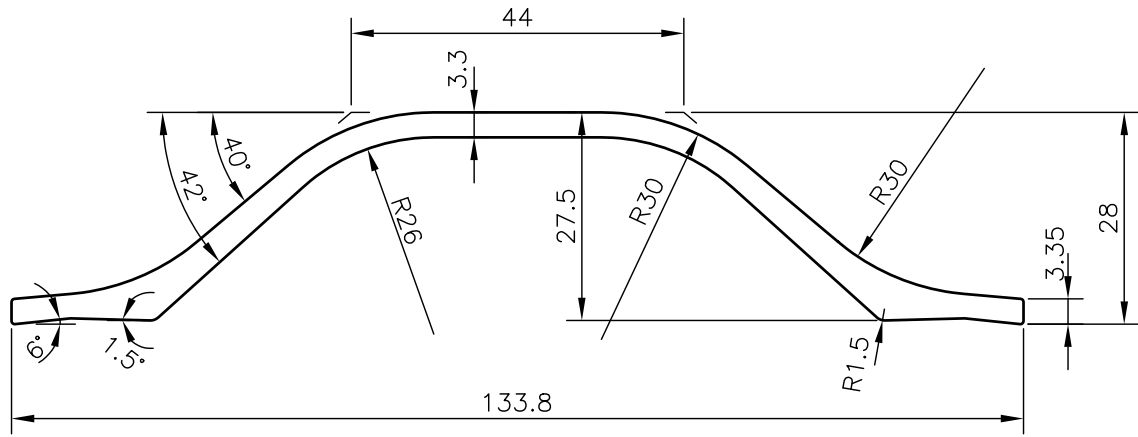


P-JAL-B-634

G102510



SECTION	EXISTING WEIGHT/12 FEET	NEW WEIGHT/12 FEET
18663	6.380	5.490

Q01860

CONTROLLED COPY



SYMBOL OF QUALITY
AN ISO 9001 COMPANY

JINDAL ALUMINIUM LTD.
BHIWADI-301019 (INDIA)

	NAME	DATE
DRAWN	ASHUTOSH	28-06-2024
CHECKED	PARVESH	24-07-2024
APPROVED	J.N.RAI	25-07-2024

1. ALL DIMENSIONS ARE IN mm.
2. ROUND OFF ALL SHARP CORNERS WITH 0.40 mm.
3. TOLERANCES WILL BE AS PER IS:3965-1981 , UNLESS OTHERWISE SPECIFIED

SCALE	1:1
AREA mm ²	555.988
PERIMETER mm.	304.4
WEIGHT kg/m	1.501

PARTY'S NAME	GENERAL CATEGORY, DELHI MARKET	DRAWING No.	SECTION No.
PARTY'S DRAWING No.	LIGHTER SECTION OF -18663	P-JAL-B-634	7000002704
ALLOY & TEMPER	HE9 WP	G102510	G102510
DESCRIPTION	HANDLE SECTION	PRODUCT CODE:-037	
		HSN CODE:- 76042990	