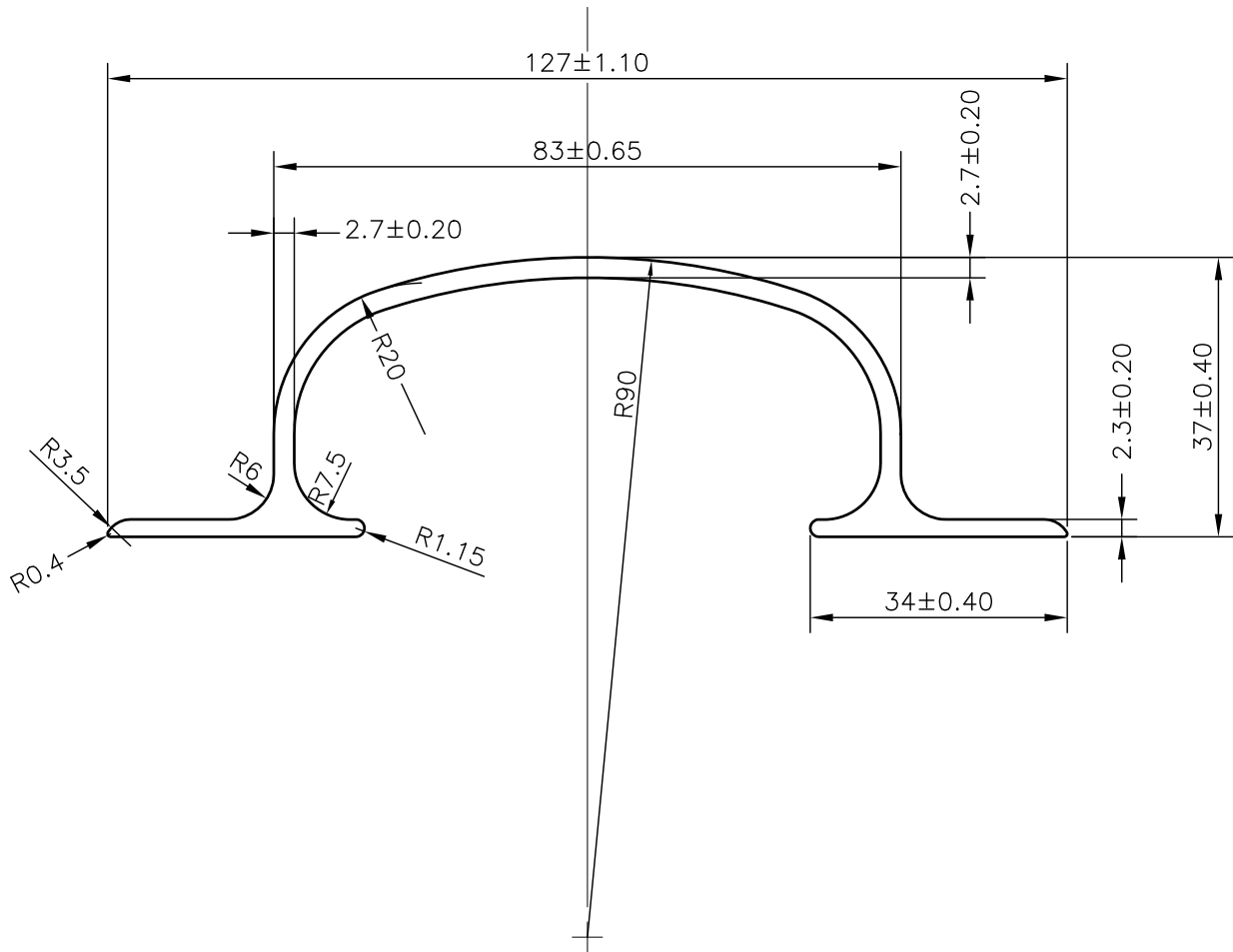


P-JAL-B-635

G102511



SECTION	EXISTING WEIGHT/12 FEET	NEW WEIGHT/12 FEET
18678	5.50	5.219

Q01861

CONTROLLED COPY



SYMBOL OF QUALITY  
AN ISO 9001 COMPANY

**JINDAL ALUMINIUM LTD.**  
BHIWADI-301019 (INDIA)

	NAME	DATE
DRAWN	ASHUTOSH	28-06-2024
CHECKED	PARVESH	24-07-2024
APPROVED	J.N.RAI	25-07-2024

1. ALL DIMENSIONS ARE IN mm.
2. ROUND OFF ALL SHARP CORNERS WITH 0.40 mm.
3. TOLERANCES WILL BE AS PER IS:3965-1981 , UNLESS OTHERWISE SPECIFIED

SCALE	1:1
AREA mm <sup>2</sup>	528.542
PERIMETER mm.	373.53
WEIGHT kg/m	1.427

PARTY'S NAME	GENERAL CATEGORY, DELHI MARKET	DRAWING No.	P-JAL-B-635	SECTION No.	7000002705
PARTY'S DRAWING No.	LIGHTER SECTION OF 18678		G102511		G102511
ALLOY & TEMPER	HE9 WP	PRODUCT CODE:-037			
		HSN CODE:- 76042990			
DESCRIPTION	HANDLE SECTION				