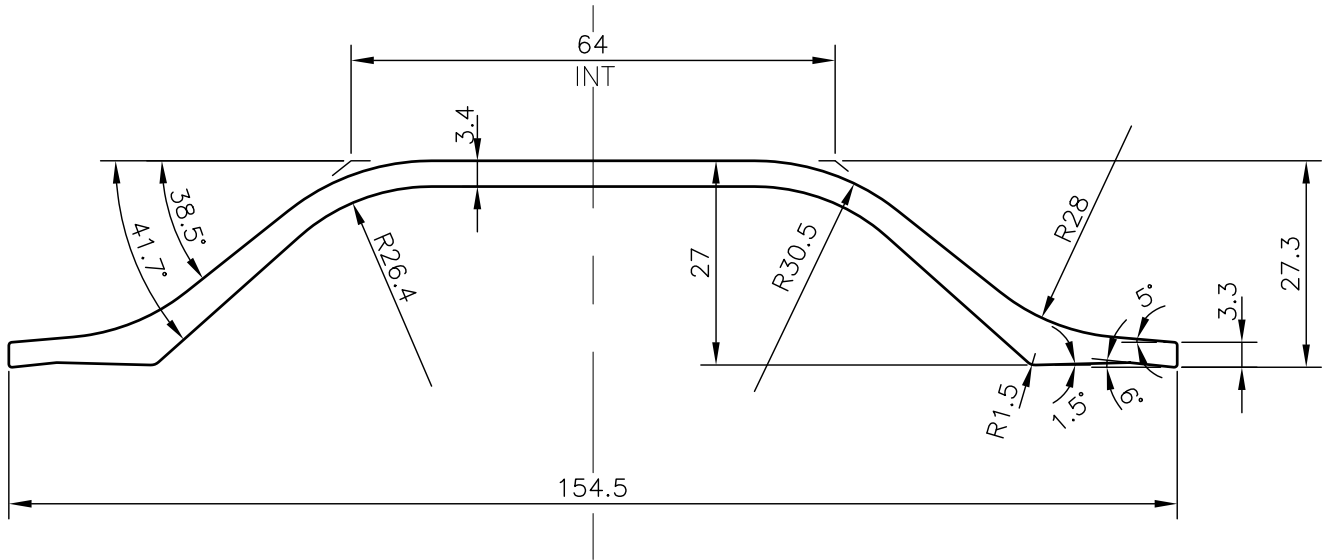


P-JAL-B-636

G102512



SECTION	EXISTING WEIGHT/12 FEET	NEW WEIGHT/12 FEET
18664	7.430	6.379

Q01862

CONTROLLED COPY



SYMBOL OF QUALITY
AN ISO 9001 COMPANY

JINDAL ALUMINIUM LTD.
BHIWADI-301019 (INDIA)

	NAME	DATE
DRAWN	ASHUTOSH	28-06-2024
CHECKED	PARVESH	24-07-2024
APPROVED	J.N.RAI	25-07-2024

1. ALL DIMENSIONS ARE IN mm.
2. ROUND OFF ALL SHARP CORNERS WITH 0.40 mm.
3. TOLERANCES WILL BE AS PER IS:3965-1981 , UNLESS OTHERWISE SPECIFIED

SCALE	1:1
AREA mm ²	645.883
PERIMETER mm.	344.37
WEIGHT kg/m	1.744

PARTY'S NAME	GENERAL CATEGORY, DELHI MARKET		DRAWING No.	SECTION No.
PARTY'S DRAWING No.	LIGHTER SECTION OF 18664		P-JAL-B-636	7000002706
ALLOY & TEMPER	HE9 WP	PRODUCT CODE:-037	G102512	G102512
		HSN CODE:- 76042990		
DESCRIPTION	HANDLE SECTION			