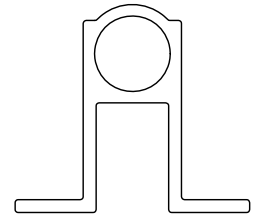
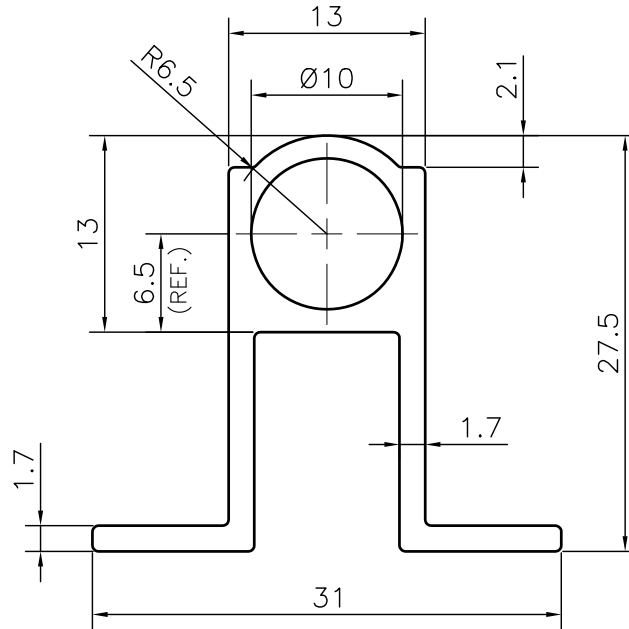


P-JAL-B-650

G102592



SCALE 1:1



HEAVIER SECTION	EXISTING WEIGHT/12 FEET	NEW WEIGHT/12 FEET
D7564	1.690	1.547

1. STRAIGHTNESS= 1.7mm/M
2. TWIST= 1.7mm/M
3. ANGULARITY= ±2°
4. FLATNESS= 0.007xWIDTH

Q02111

CONTROLLED COPY



SYMBOL OF QUALITY  
AN ISO 9001 COMPANY

**JINDAL ALUMINIUM LTD.**  
BHIWADI-301019 (INDIA)

	NAME	DATE
DRAWN	ASHUTOSH	12-07-2024
CHECKED	PARVESH	02-08-2024
APPROVED	J.N.RAI	02-08-2024

1. ALL DIMENSIONS ARE IN mm.
2. ROUND OFF ALL SHARP CORNERS WITH 0.40 mm.
3. TOLERANCES WILL BE AS PER BS:EN-755-9 , UNLESS OTHERWISE SPECIFIED

SCALE	2:1
AREA mm <sup>2</sup>	156.829
PERIMETER mm.	140.886
WEIGHT kg/m	0.423

PARTY'S NAME	IMPERIAL METAL MART	DRAWING No.	P-JAL-B-650	SECTION No.	7000002797
PARTY'S DRAWING No.	LIGHTER SECTION OF -D7564		G102592		G102592
ALLOY & TEMPER	HE9WP A3D	PRODUCT CODE:-030			
		HSN CODE:- 76042100			
DESCRIPTION	TOWER BOLT				