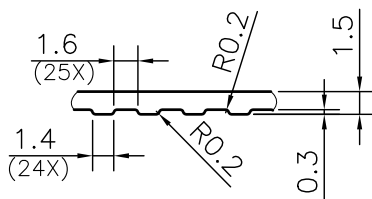
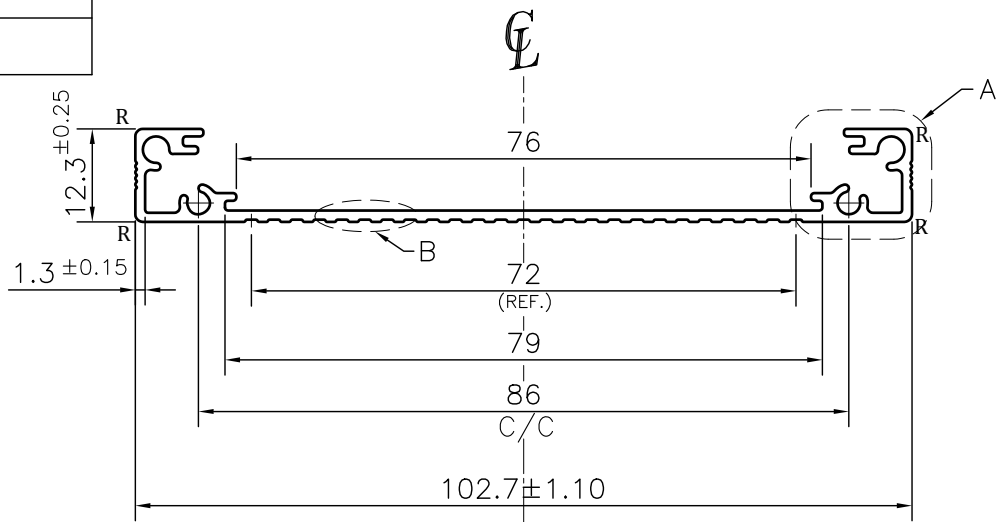
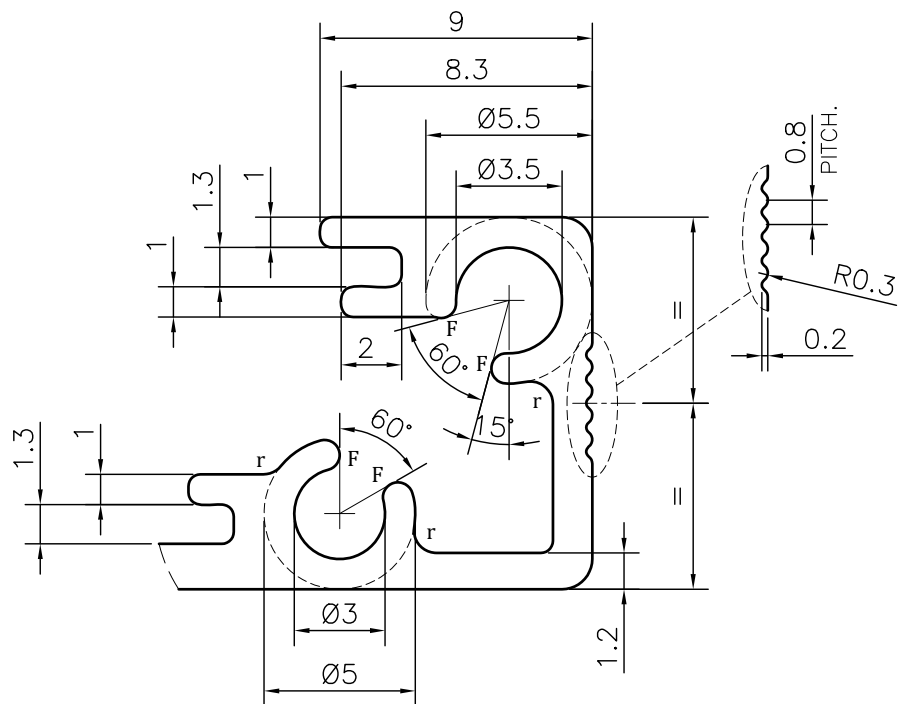


P-JAL-B-445

G102603



DETAIL B
SCALE 2:1



DETAIL A
SCALE 4:1

NOTE:-

- r= 0.75 RADIUS (6 PLACES)**
- R= 1.0 RADIUS (4 PLACES)**
- F= FULL RADIUS (8 PLACES)**

- 1. STRAIGHTNESS= 1.7mm/M
- 2. TWIST= 1.7mm/M
- 3. ANGULARITY= ±2°
- 4. FLATNESS= 0.007xWIDTH

Q01005

CONTROLLED COPY



SYMBOL OF QUALITY
AN ISO 9001 COMPANY

JINDAL ALUMINIUM LTD.
BHIWADI-301019 (INDIA)

	NAME	DATE
DRAWN	ASHUTOSH	17-02-2024
CHECKED	PARVESH	05-08-2024
APPROVED	J.N.RAI	06-08-2024
SCALE		1:1
AREA	mm ²	218.199
PERIMETER	mm.	335.06
WEIGHT	kg/m	0.589
DRAWING No.		SECTION No.
P-JAL-B-445		7000002811
G102603		G102603

- 1. ALL DIMENSIONS ARE IN mm.
- 2. ROUND OFF ALL SHARP CORNERS WITH 0.40 mm.
- 3. TOLERANCES WILL BE AS PER BS:EN-755-9 , UNLESS OTHERWISE SPECIFIED

PARTY'S NAME	ARK AQUATICS INDIA, DELHI	
PARTY'S DRAWING No.	AS PER SAMPLE	
ALLOY & TEMPER	6063 T6	PRODUCT CODE:-085
		HSN CODE:- 76042990
DESCRIPTION	INDUSTRIAL SECTION	