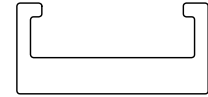
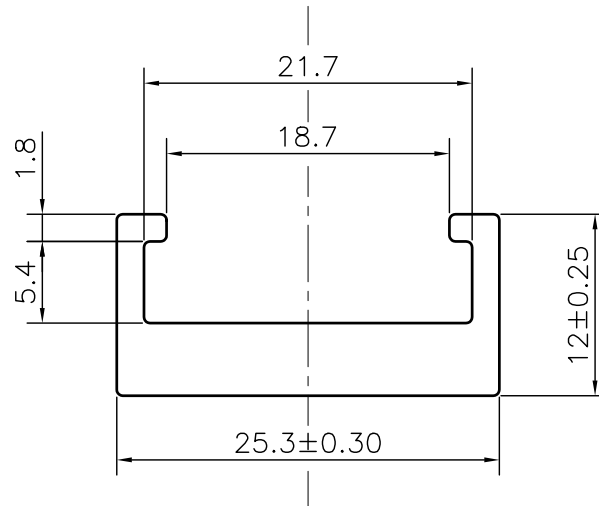


P-JAL-B-673

G102704



SCALE 1:1



TOLERANCE CHART CD = CIRCUMSCRIBING CIRCLE

| DIMENSION  | CD<100 | 100<CD<200 | 200<CD<300 | 300<CD<500 |
|------------|--------|------------|------------|------------|
| UPTO 10mm  | ±0.25  | ±0.30      | ±0.35      | ±0.40      |
| 10.0 -25.0 | ±0.30  | ±0.40      | ±0.50      | ±0.60      |
| 25.0 -50.0 | ±0.50  | ±0.60      | ±0.80      | ±0.90      |
| 50.0 -100  | ±0.70  | ±0.90      | ±1.10      | ±1.30      |
| 100 - 150  | -      | ±1.10      | ±1.30      | ±1.50      |
| 150 - 200  | -      | ±1.3       | ±1.50      | ±1.80      |
| 200 - 300  | -      | -          | ±1.70      | ±2.10      |
| 300 - 450  | -      | -          | -          | ±2.80      |

Q02139

CONTROLLED COPY

1. STRAIGHTNESS= 1.7mm/M
2. TWIST= 1.7mm/M
3. ANGULARITY= ±2°
4. FLATNESS= 0.007xWIDTH



SYMBOL OF QUALITY  
AN ISO 9001 COMPANY

**JINDAL ALUMINIUM LTD.**  
BHIWADI-301019 (INDIA)

|          | NAME     | DATE       |
|----------|----------|------------|
| DRAWN    | ASHUTOSH | 02-08-2024 |
| CHECKED  | PARVESH  | 30-08-2024 |
| APPROVED | J.N.RAI  | 30-08-2024 |

1. ALL DIMENSIONS ARE IN mm.
2. ROUND OFF ALL SHARP CORNERS WITH 0.40 mm.
3. TOLERANCES WILL BE AS PER BS:EN-755-9 , UNLESS OTHERWISE SPECIFIED

|                      |             |
|----------------------|-------------|
| SCALE                | 2:1         |
| AREA mm <sup>2</sup> | 152.623     |
| PERIMETER mm.        | 92.94       |
| WEIGHT kg/m          | 0.412       |
| DRAWING No.          | SECTION No. |
| P-JAL-B-673          | 7000002912  |
| G102704              | G102704     |
|                      |             |
|                      |             |

|                     |                                |                     |
|---------------------|--------------------------------|---------------------|
| PARTY'S NAME        | ANTARCTICA EQUIPMENT PVT. LTD. |                     |
| PARTY'S DRAWING No. | AS PER SAMPLE                  |                     |
| ALLOY & TEMPER      | 6063 T6                        | PRODUCT CODE:-082   |
|                     |                                | HSN CODE:- 76042990 |
| DESCRIPTION         | MISC. CHANNEL SECTION          |                     |