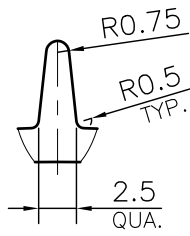
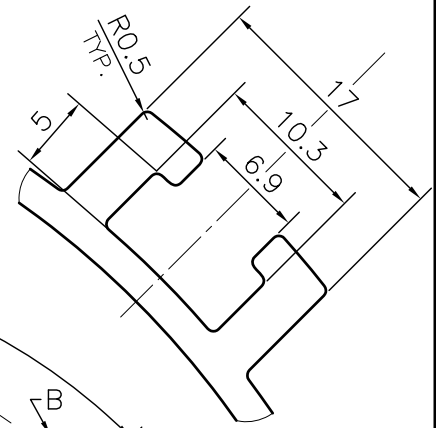


P-JAL-B-725

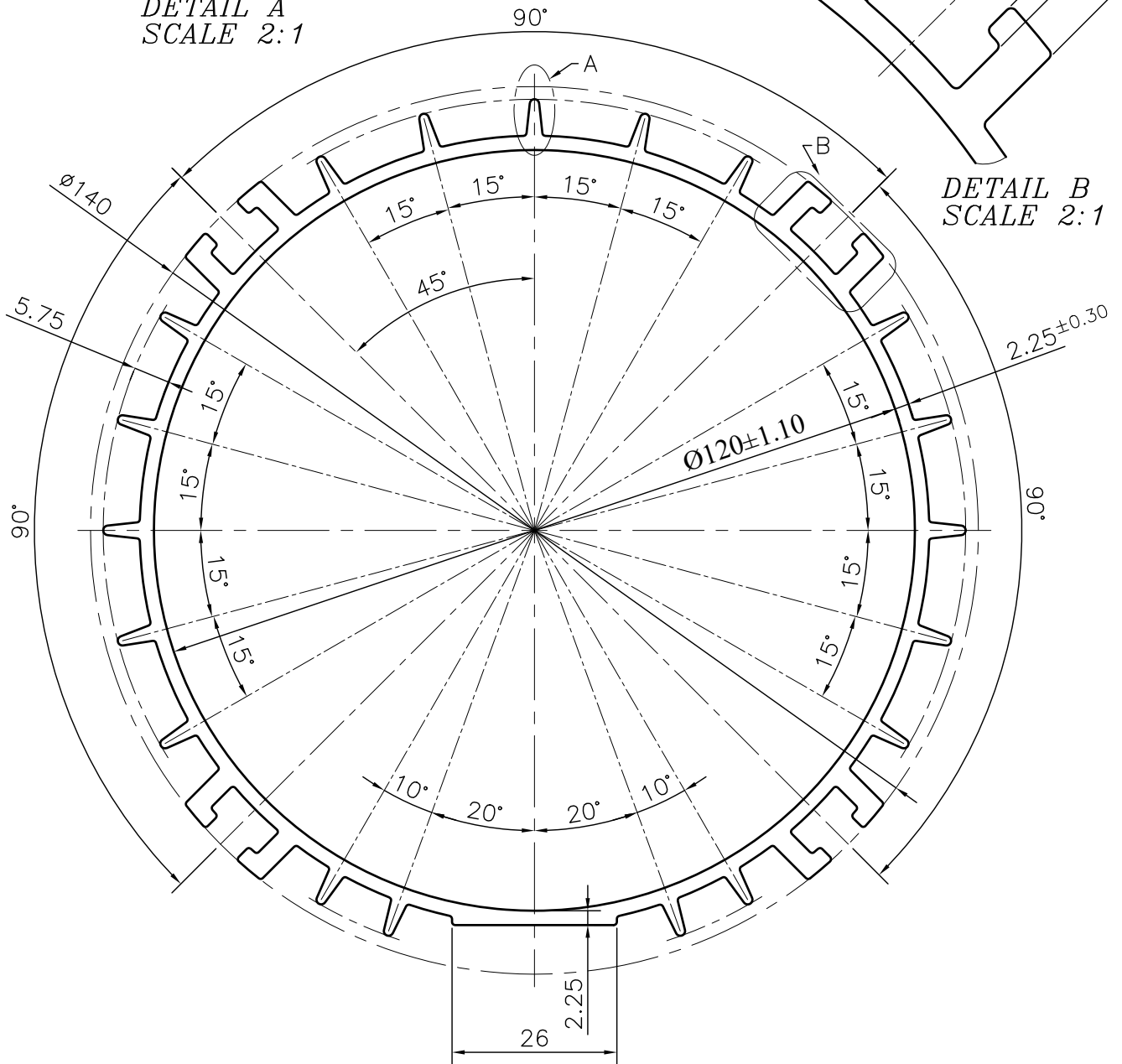
G102747



DETAIL A
SCALE 2:1



DETAIL B
SCALE 2:1



1. STRAIGHTNESS= 1.7mm/M
2. TWIST= 1.7mm/M
3. ANGULARITY= ±2°
4. FLATNESS= 0.007xWIDTH

Q02345

CONTROLLED COPY



SYMBOL OF QUALITY
AN ISO 9001 COMPANY

JINDAL ALUMINIUM LTD.
BHIWADI-301019 (INDIA)

	NAME	DATE
DRAWN	ASHUTOSH	04-09-2024
CHECKED	PARVESH	10-09-2024
APPROVED	J.N.RAI	10-09-2024
SCALE		1:1
AREA mm ²		1335.8
PERIMETER mm.		716.486
WEIGHT kg/m		3.607
DRAWING No.	SECTION No.	
P-JAL-B-725	7000002955	
G102747	G102747	

1. ALL DIMENSIONS ARE IN mm.
2. ROUND OFF ALL SHARP CORNERS WITH 0.40 mm.
3. TOLERANCES WILL BE AS PER BS:EN-755-9 , UNLESS OTHERWISE SPECIFIED

PARTY'S NAME	PANKAJ METAL WORKS	
PARTY'S DRAWING No.	AS PER PROPOSAL DRAWING	
ALLOY & TEMPER	6063 T6	PRODUCT CODE:-084
		HSN CODE:- 76042100
DESCRIPTION	MOTOR BODY SECTION	