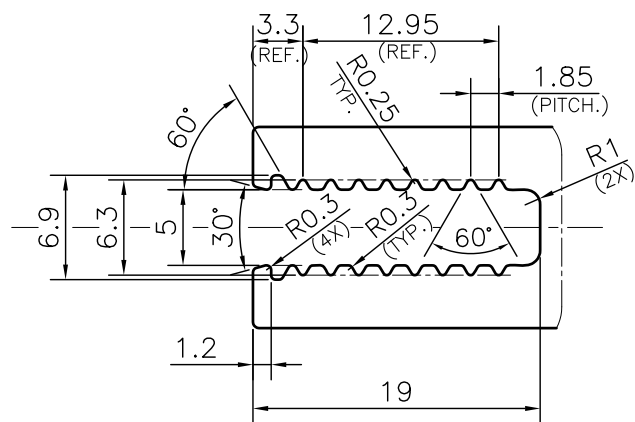
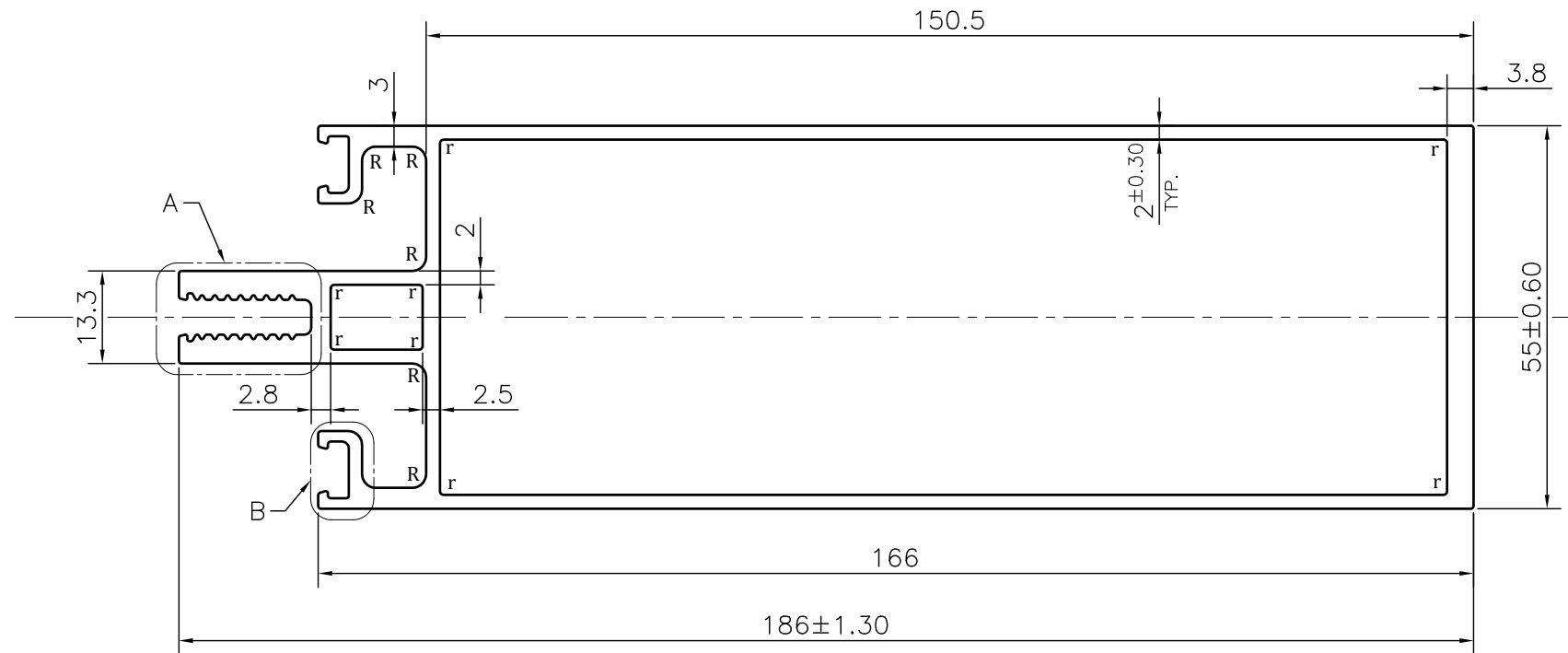
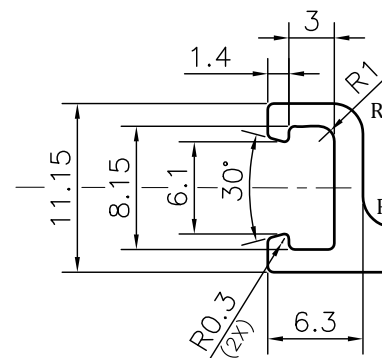


P-JAL-B-716

G102765



DETAIL A
SCALE 2:1



DETAIL B
SCALE 2:1

TOLERANCE CHART CD = CIRCUMSCRIBING CIRCLE


DIMENSION	CD ≤ 100	100 < CD ≤ 200	200 < CD ≤ 300	300 < CD ≤ 500
UPTO 10mm	±0.25	±0.30	±0.35	±0.40
10.0 - 25.0	±0.30	±0.40	±0.50	±0.60
25.0 - 50.0	±0.50	±0.60	±0.80	±0.90
50.0 - 100	±0.70	±0.90	±1.10	±1.30
100 - 150	-	±1.10	±1.30	±1.50
150 - 200	-	±1.3	±1.50	±1.80
200 - 300	-	-	±1.70	±2.10
300 - 450	-	-	-	±2.80

Q02337

CONTROLLED COPY

NOTE:-
r= 0.50 RADIUS (8 PLACES)
R= 2.0 RADIUS (8 PLACES)

1. STRAIGHTNESS= 1.7mm/M
2. TWIST= 1.7mm/M
3. ANGULARITY= ±2°
4. FLATNESS= 0.007xWIDTH

 SYMBOL OF QUALITY AN ISO 9001 COMPANY	JINDAL ALUMINIUM LTD. BHIWADI-301019 (INDIA)		NAME	DATE	
			DRAWN	ASHUTOSH	02-09-2024
1. ALL DIMENSIONS ARE IN mm. 2. ROUND OFF ALL SHARP CORNERS WITH 0.40 mm. 3. TOLERANCES WILL BE AS PER BS:EN-755-9 , UNLESS OTHERWISE SPECIFIED			CHECKED	PARVESH	12-09-2024
			APPROVED	J.N.RAI	13-09-2024
PARTY'S NAME ELITE WINDOW FACTORY			SCALE	1:1	
			AREA mm ²	1276.805	
PARTY'S DRAWING No. AS PER CAD DRAWING			PERIMETER mm.	639.481	
			WEIGHT kg/m	3.447	
ALLOY & TEMPER 6063 T6			DRAWING No.	SECTION No.	
			P-JAL-B-716	7000002982	
DESCRIPTION CURTAIN WALL SECTION			G102765	G102765	
			PRODUCT CODE:-055		
			HSN CODE:- 76042100		