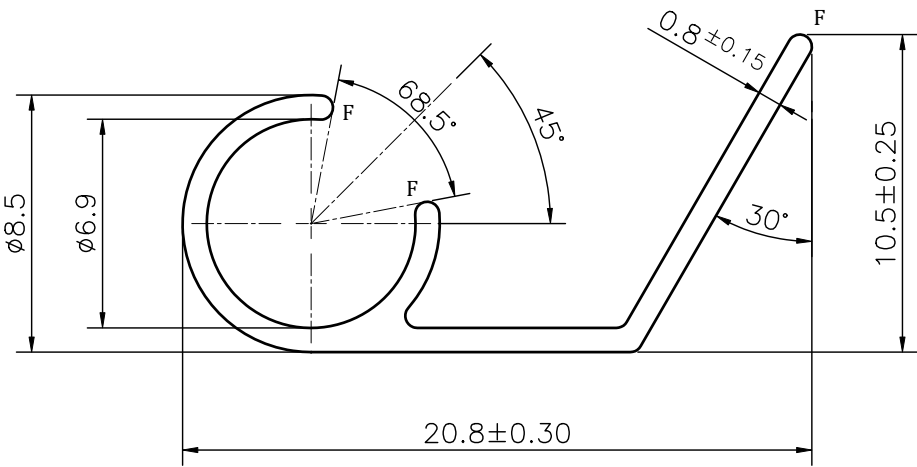


P-JAL-B-886		 SCALE 1:1
G103390		




NOTE:-

F= FULL RADIUS (3 PLACES)

1. STRAIGHTNESS= 1.7mm/M
2. TWIST= 1.7mm/M
3. ANGULARITY= $\pm 2^\circ$
4. FLATNESS= 0.007xWIDTH

Q02739

CONTROLLED COPY

<div></div> <div>SYMBOL OF QUALITY AN ISO 9001 COMPANY</div>		<div>JINDAL ALUMINIUM LTD.</div> <div>BHIWADI-301019 (INDIA)</div>			NAME	DATE	
				DRAWN	ASHUTOSH	31-12-2024	
				CHECKED	PARVESH	09-01-2025	
				APPROVED	J.N.RAI	09-01-2025	
<div>1. ALL DIMENSIONS ARE IN mm.</div> <div>2. ROUND OFF ALL SHARP CORNERS WITH 0.40 mm.</div> <div>3. TOLERANCES WILL BE AS PER BS:EN-755-9 , UNLESS OTHERWISE SPECIFIED</div>				SCALE		4:1	
				AREA mm ²		32.031	
				PERIMETER mm.		78.53	
				WEIGHT kg/m		0.086	
PARTY'S NAME		HARKRISHAN PLASTICS, DELHI		DRAWING No.		SECTION No.	
PARTY'S DRAWING No.				AS PER PROPOSAL DRAWING			
ALLOY & TEMPER		6063 T6		PRODUCT CODE:-047		P-JAL-B-886	7000003585
				HSN CODE:- 76042990			
DESCRIPTION		DISPLAY SECTION		G103390		G103390	