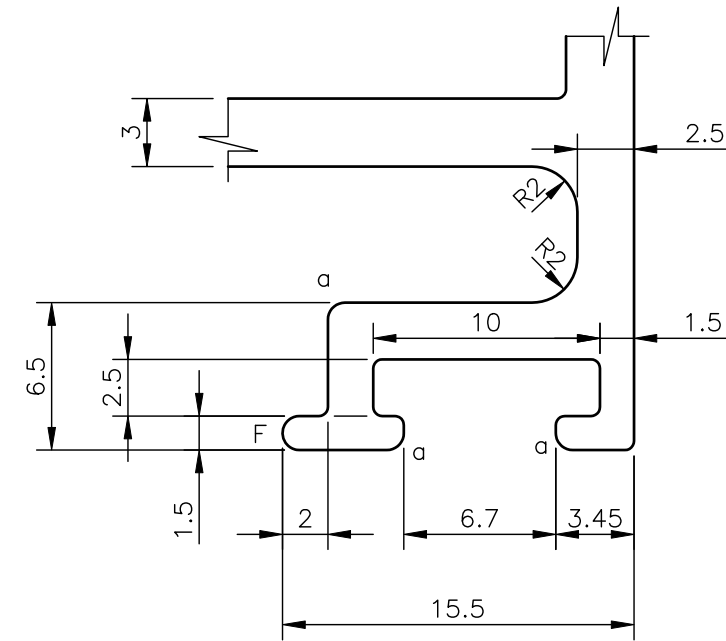
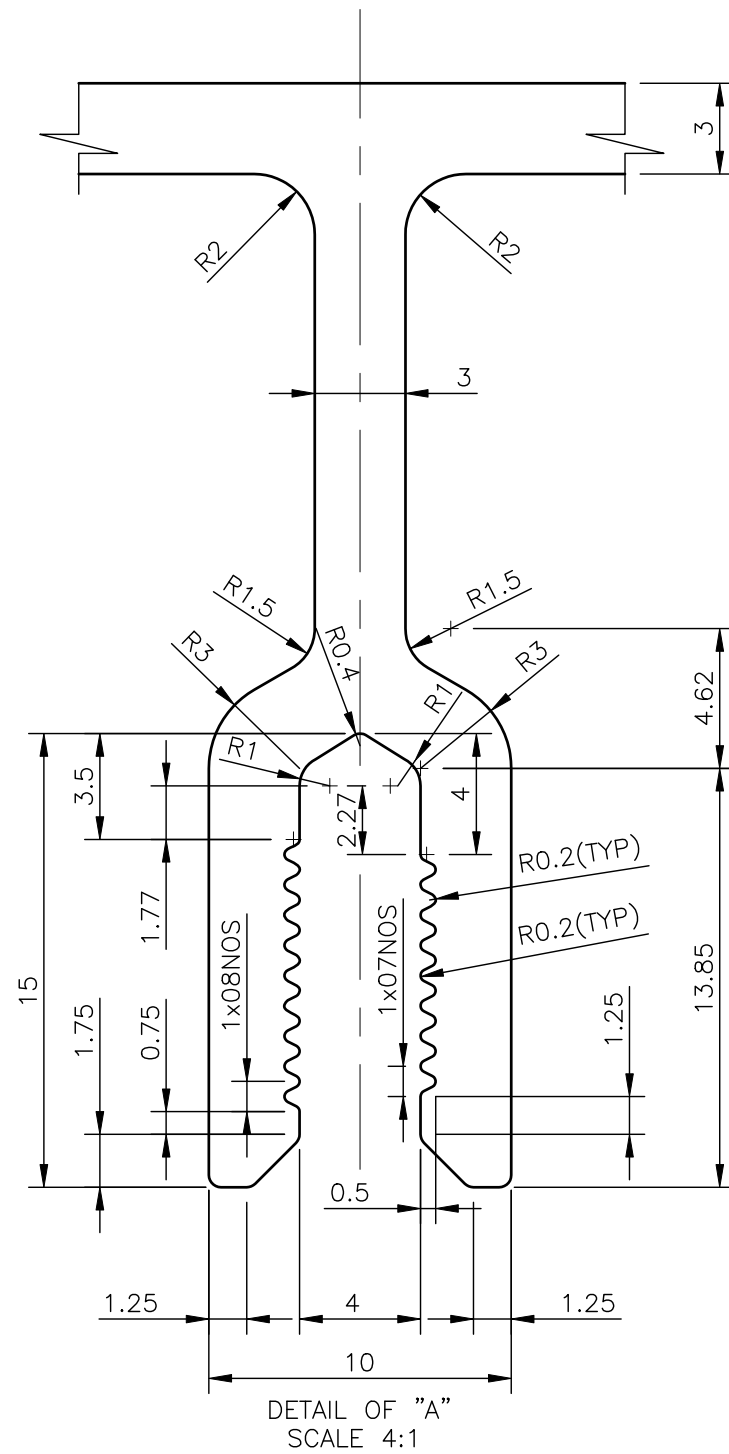
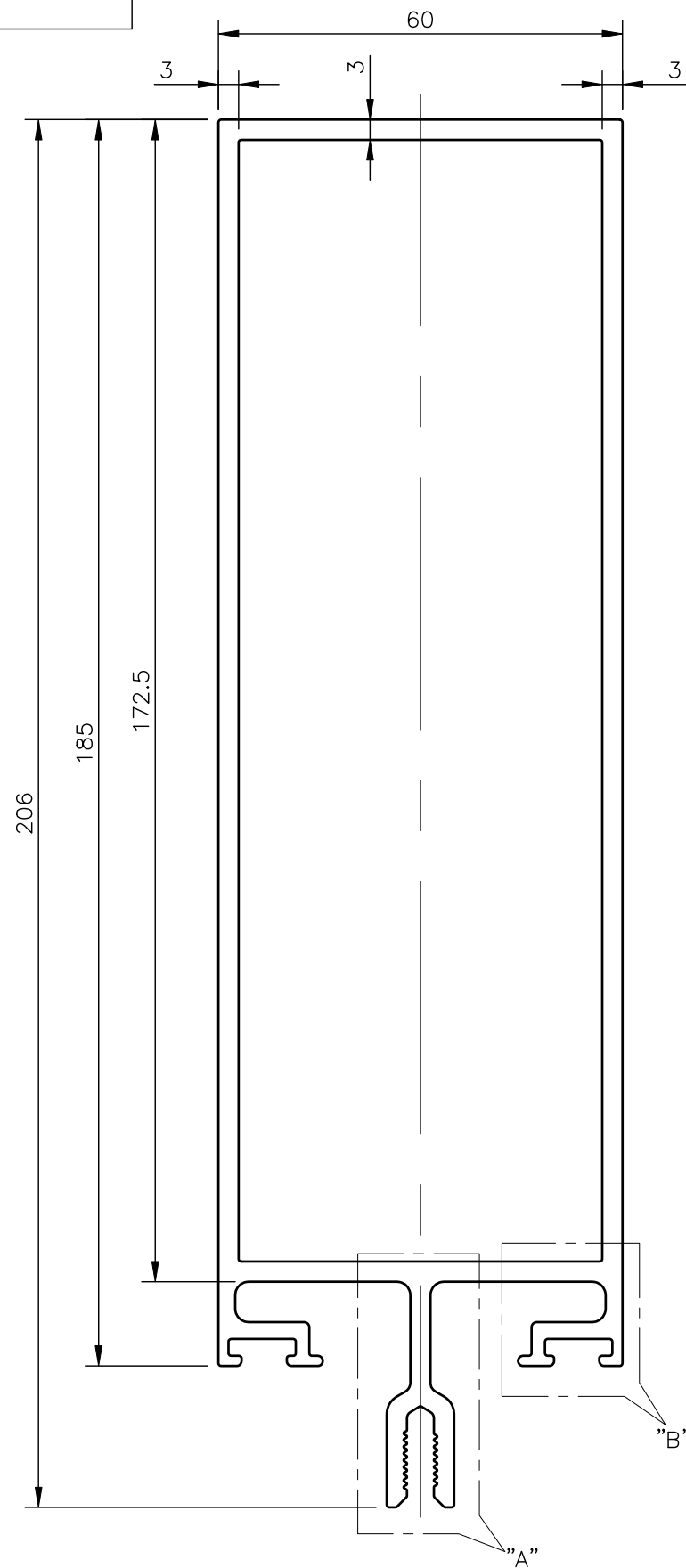


P-JAL-B-893

G103523



DETAIL OF "B"
SCALE 3:1

NOTE:-
a = R0.75 mm (6 PLACES)
F = FULL RADIUS (2 PLACES)

1. STRAIGHTNESS= 1.7mm/M
2. TWIST= 1.7mm/M
3. ANGULARITY= ±2°
4. FLATNESS= 0.007xWIDTH

CONTROLLED COPY



SYMBOL OF QUALITY
AN ISO 9001 COMPANY

JINDAL ALUMINIUM LTD.
BHIWADI-301019 (INDIA)

1. ALL DIMENSIONS ARE IN mm.
2. ROUND OFF ALL SHARP CORNERS WITH 0.40 mm.
3. TOLERANCES WILL BE AS PER BS:EN-755-9 , UNLESS OTHERWISE SPECIFIED

PARTY'S NAME S S CONSTRUCTION CO., GREATER NOIDA

PARTY'S DRAWING No. HEAVIER OF 22822

ALLOY & TEMPER HE9 WP

PRODUCT CODE:-055
HSN CODE:- 76042100

DESCRIPTION CURTAIN WALL SECTION

| | NAME | DATE |
|-------------|-----------------|------------|
| DRAWN | ASHUTOSH | 13-01-2025 |
| CHECKED | PARVESH | 10-02-2025 |
| APPROVED | J.N RAI | 10-02-2025 |
| SCALE | | 1:1 |
| AREA | mm ² | 1655.952 |
| PERIMETER | mm. | 696.363 |
| WEIGHT | kg/m | 4.471 |
| DRAWING No. | SECTION No. | |
| P-JAL-B-893 | 7000003752 | |
| G103523 | G103523 | |