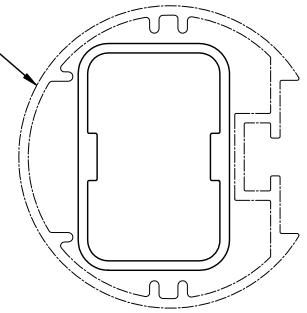


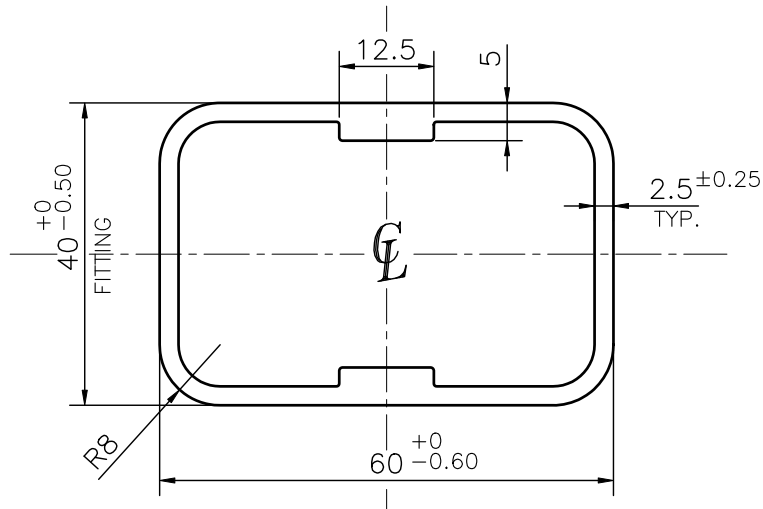
P-JAL-B-958

G103628

G103627



**MATCHING
SCALE 1:2**



- 1. STRAIGHTNESS= 1.7mm/M
- 2. TWIST= 1.7mm/M
- 3. ANGULARITY= ±2°
- 4. FLATNESS= 0.007xWIDTH

Q03023

CONTROLLED COPY



SYMBOL OF QUALITY
AN ISO 9001 COMPANY

JINDAL ALUMINIUM LTD.
BHIWADI-301019 (INDIA)

	NAME	DATE
DRAWN	ASHUTOSH	14-02-2025
CHECKED	PARVESH	03-03-2025
APPROVED	J.N.RAI	03-03-2025

- 1. ALL DIMENSIONS ARE IN mm.
- 2. ROUND OFF ALL SHARP CORNERS WITH 0.40 mm.
- 3. TOLERANCES WILL BE AS PER BS:EN-755-9 , UNLESS OTHERWISE SPECIFIED

SCALE	1:1
AREA mm ²	508.529
PERIMETER mm.	186.265
WEIGHT kg/m	1.373

PARTY'S NAME	SPORTS & SPORTS INTERNATIONAL, MEERUT	
PARTY'S DRAWING No.	AS PER PROPOSAL DRAWING	
ALLOY & TEMPER	6063 T6	PRODUCT CODE:-085
		HSN CODE:- 76042100
DESCRIPTION	INDUSTRIAL SECTION	

DRAWING No.	SECTION No.
P-JAL-B-958	7000003860
G103628	G103628