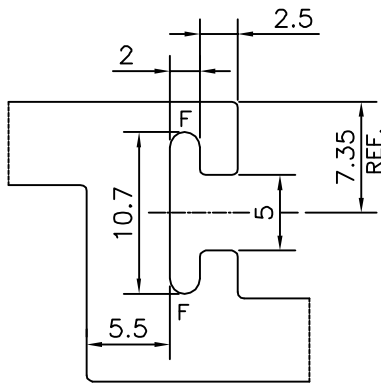
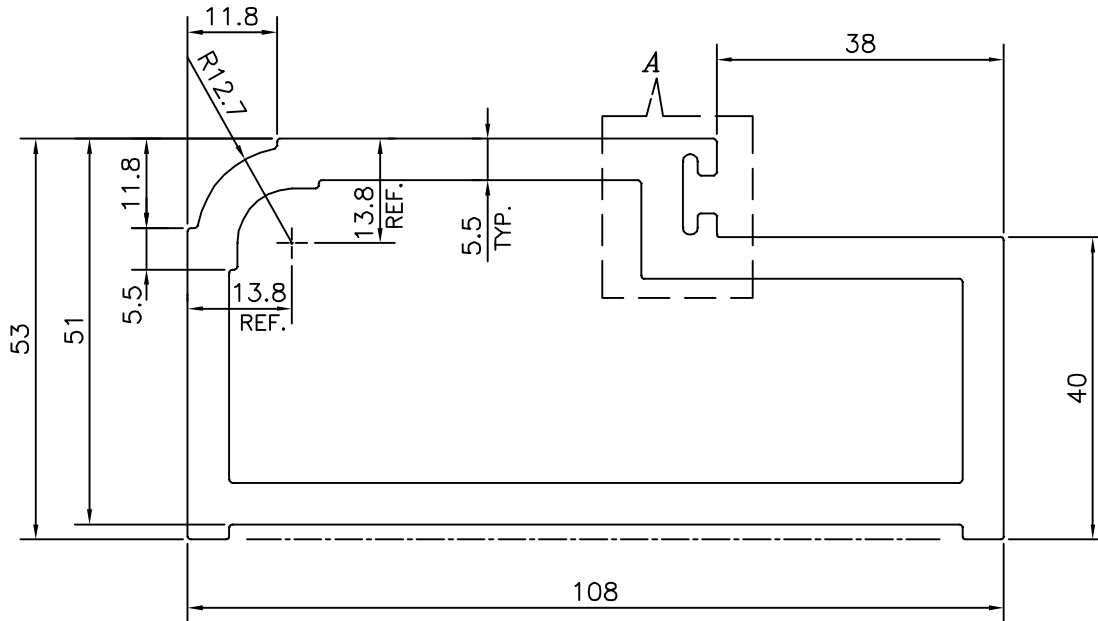


P-14258

S4361




DETAIL OF "A"
SCALE 2:1

F = FULL RADIUS (2 PLACES)

TOLERANCES ON OVERALL WIDTHS & WIDTHS ACROSS FLATS OF BARS, & REGULAR SECTIONS

UPTO 6.40mm - ±0.20	UPTO 32.0mm - ±0.38	UPTO 120.0mm - ±0.85	1. STRAIGHTNESS=1.7mm/M 2. TWIST=1.7mm/M 3. ANGULARITY= ±2° 4. FLATNESS =0.007xWIDTH
UPTO 10.0mm - ±0.23	UPTO 50.0mm - ±0.46	UPTO 160.0mm - ±1.02	
UPTO 12.0mm - ±0.25	UPTO 60.0mm - ±0.53	UPTO 200.0mm - ±1.14	
UPTO 16.0mm - ±0.28	UPTO 80.0mm - ±0.69	UPTO 250.0mm - ±1.40	
UPTO 25.0mm - ±0.30	UPTO 100.0mm - ±0.75	UPTO 300.0mm - ±1.65	

 SYMBOL OF QUALITY AN ISO 9001 COMPANY	JINDAL ALUMINIUM LTD. BANGALORE-560073 (INDIA)	NAME	DATE
		DRAWN	PARVESH
		CHECKED	
		APPROVED	S.S.GARG
		SCALE	1:1
		AREA mm ²	1652.02
		PERIMETER mm.	336.73
		WEIGHT kg/m	4.46
PARTY'S NAME	KAMALA ADITYA CONSTRUCTION PVT. LTD., PATNA	DRAWING No.	SECTION No.
PARTY'S DRAWING No.	AS PER DRAWING	P-14258	-
ALLOY & TEMPER	HE9 WP	S4361	S4361
DESCRIPTION	DOOR FRAME SECTION		