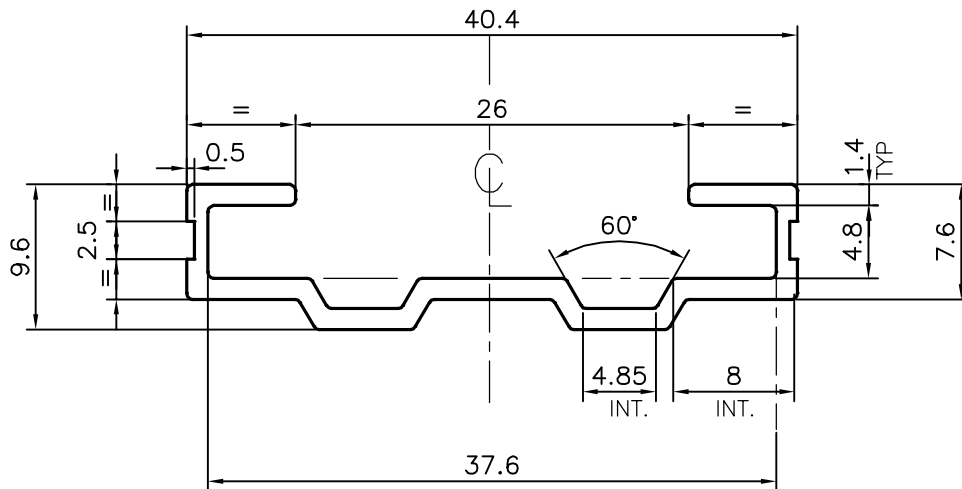
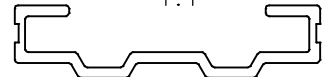


P-14469-2

S4420

1:1

**ISSUE-2**

THICKNESS CHANGED FROM 1.2 TO 1.40 mm

DIMENSION CHANGED FROM 40 TO 40.4, &amp; FROM 9.0 TO 9.6 mm &amp;

OTHER DIMENSION CHANGE ACCORDINGLY.

WEIGHT ALSO CHANGED FROM 0.193 kg/m TO 0.254 kg/m



SYMBOL OF QUALITY  
AN ISO 9001 COMPANY

**JINDAL ALUMINIUM LTD.**  
BANGALORE-560073 (INDIA)

	NAME	DATE
DRAWN	J.P.KAUSHIK	08-07-2016
CHECKED		
APPROVED	S.S. GARG	13-08-2016
SCALE		2:1
AREA mm <sup>2</sup>		93.989
PERIMETER mm.		140.089
WEIGHT kg/m		0.254
DRAWING No.		SECTION No.
P-14469-2		-
S4420		S4420(ISSUE-2)

1. ALL DIMENSIONS ARE IN mm.
2. ROUND OFF ALL SHARP CORNERS WITH 0.40 mm.
3. TOLERANCES WILL BE AS PER IS:3965-1981, UNLESS OTHERWISE SPECIFIED

PARTY'S NAME	ACCUMAX INTERIOR PRODUCTS PVT. LTD., JAMNAGAR
PARTY'S DRAWING No.	AS PER SAMPLE & REQUIREMENT
ALLOY & TEMPER	HE9 WP
DESCRIPTION	MISC. SECTION