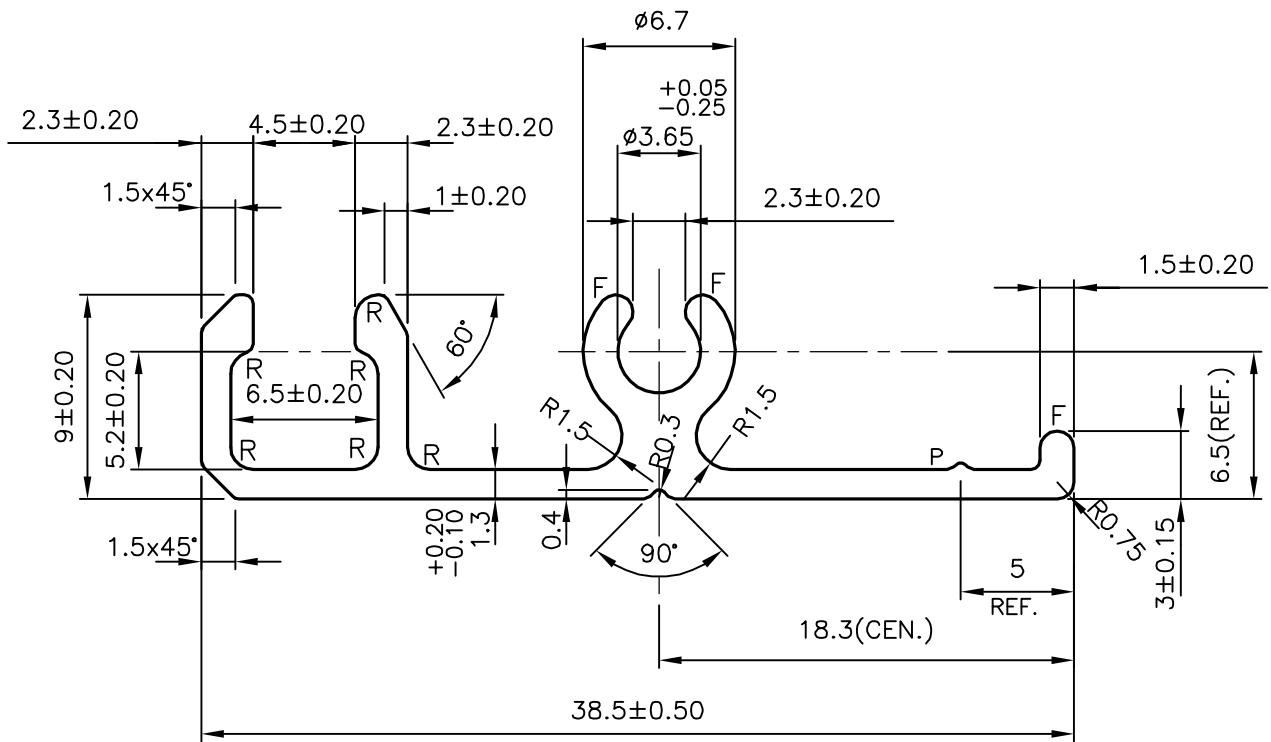
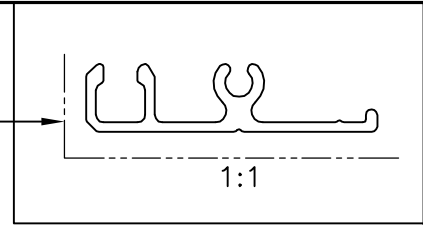


P-14792

S4509

EXPOSED SURFACE



P = PIP  $0.3 \times 90^\circ$   
 F = FULL RADIUS (3)  
 R = 1.0 RADIUS (6)



SYMBOL OF QUALITY  
AN ISO 9001 COMPANY

**JINDAL ALUMINIUM LTD.**  
 BANGALORE-560073 (INDIA)

	NAME	DATE
DRAWN	J.P.KAUSHIK	23-06-2015
CHECKED		
APPROVED	S.S.GARG	02-07-2015
SCALE		3:1
AREA mm <sup>2</sup>		102.53
PERIMETER mm.		136.565
WEIGHT kg/m		0.277
DRAWING No.	SECTION No.	
P-14792	-	
S4509	S4509	

1. ALL DIMENSIONS ARE IN mm.
2. ROUND OFF ALL SHARP CORNERS WITH 0.40 mm.
3. TOLERANCES WILL BE AS PER IS:3965-1981 UNLESS OTHERWISE SPECIFIED

PARTY'S NAME	G.V. ENTERPRISES, BANGALORE
PARTY'S DRAWING No.	AS PER DRAWING
ALLOY & TEMPER	6063 T6
DESCRIPTION	SOLAR SECTION