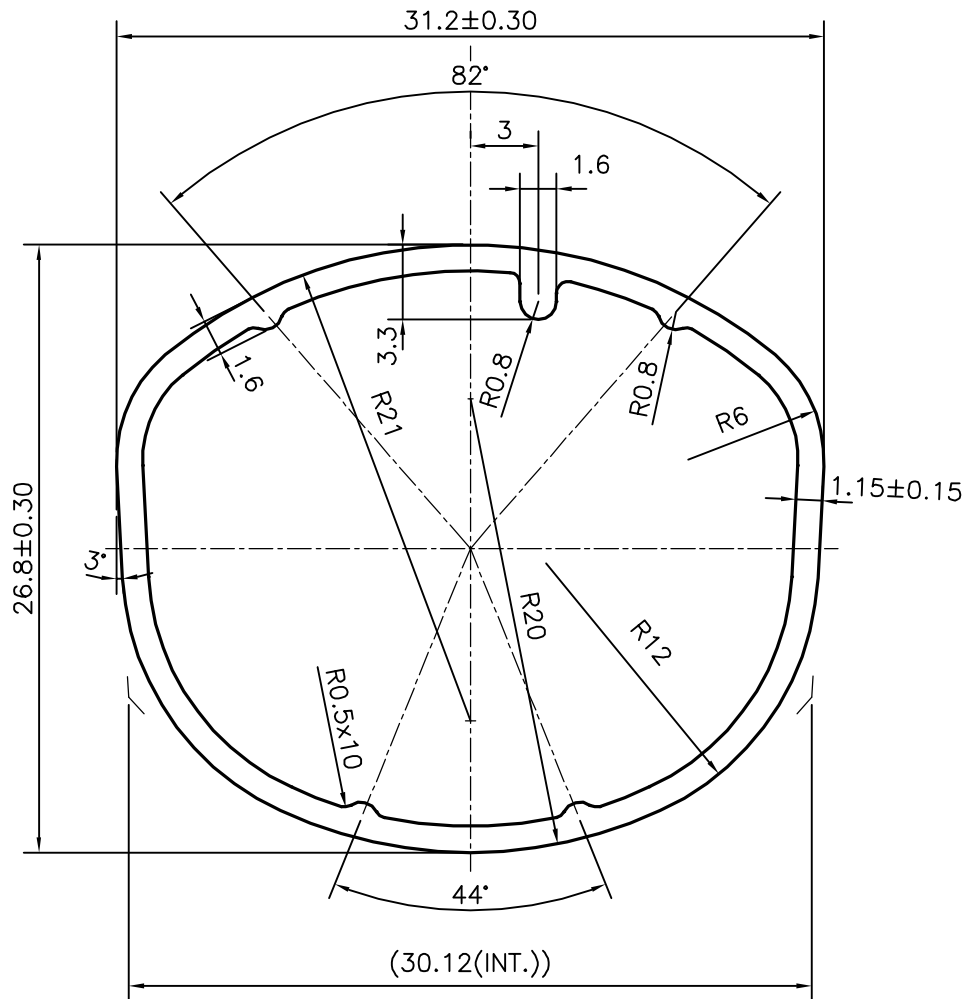
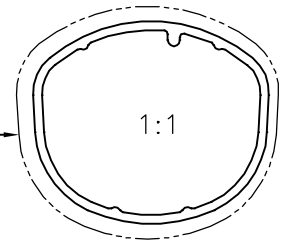


P-15085-1

S4629

EXPOSED SURFACE



SYMBOL OF QUALITY
AN ISO 9001 COMPANY

JINDAL ALUMINIUM LTD.
BANGALORE-560073 (INDIA)

| | NAME | DATE |
|----------------------|-------------|------------|
| DRAWN | J.P.KAUSHIK | 29-08-2015 |
| CHECKED | | |
| APPROVED | S.S.GARG | 04-09-2015 |
| SCALE | | 3:1 |
| AREA mm ² | | 108.192 |
| PERIMETER mm. | | 93.492 |
| WEIGHT kg/m | | 0.292 |
| DRAWING No. | SECTION No. | |
| P-15085-1 | - | |
| S4629 | S4629 | |
| | | |
| | | |

1. ALL DIMENSIONS ARE IN mm.
2. ROUND OFF ALL SHARP CORNERS WITH 0.40 mm.
3. TOLERANCES WILL BE AS PER IS:6477-1983 , UNLESS OTHERWISE SPECIFIED

| | |
|---------------------|---------------------------------|
| PARTY'S NAME | STOVEKRAFT PVT. LTD., BANGALORE |
| PARTY'S DRAWING No. | NG EXT 000 02 |
| ALLOY & TEMPER | 6063 T6 |
| DESCRIPTION | FLAME GUARD SECTION |