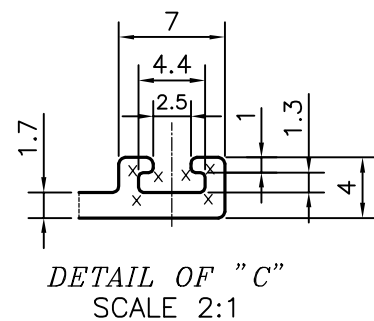
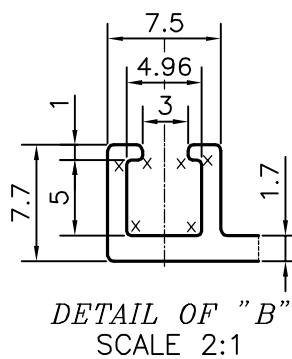
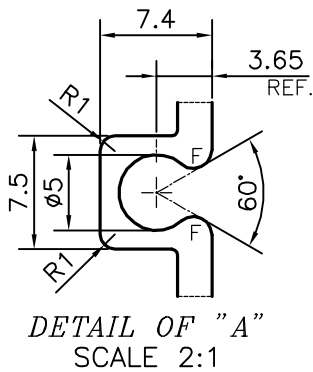
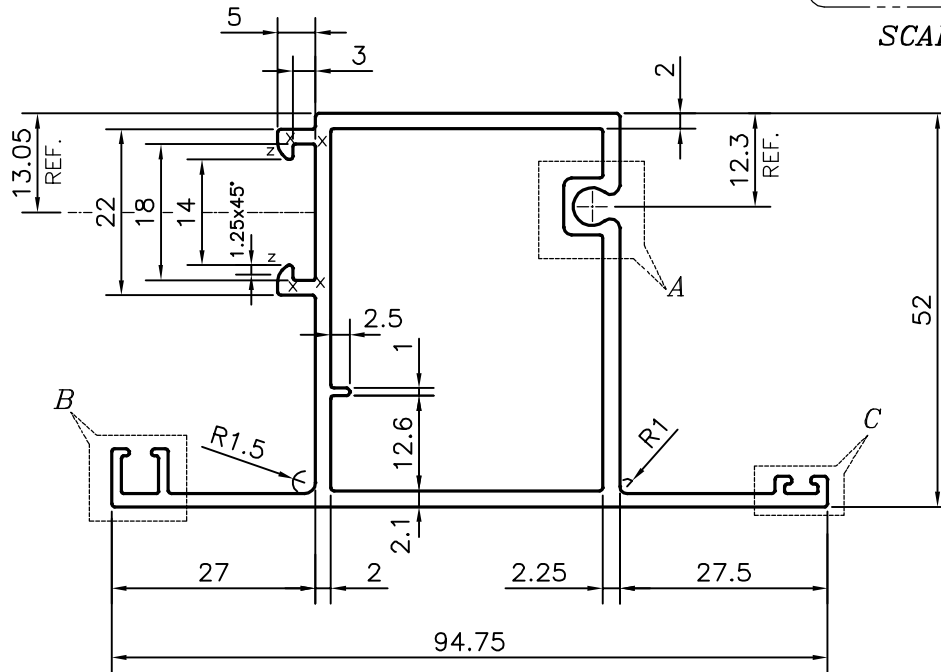


P-15137

S4656

EXPOSED SURFACE

SCALE: - 0.5:1



AVERAGE THICKNESS HAS TO BE MAINTAINED WITH IN ± 0.20 mm. OF THE NOMINAL VALUE.

Z = RADIUS 2 mm. (2 PLACES)
X = RADIUS 0.3 mm. (16 PLACES)
F = FULL RADIUS (2 PLACES)

TOLERANCES ON OVERALL WIDTHS & WIDTHS ACROSS FLATS OF BARS, & REGULAR SECTIONS

| | | | |
|--------------------------|---------------------------|---------------------------|---|
| UPTO 6.40mm - ± 0.20 | UPTO 32.0mm - ± 0.38 | UPTO 120.0mm - ± 0.85 | 1. STRAIGHTNESS=1.7mm/M 2. TWIST=1.7mm/M 3. ANGULARITY= $\pm 2^\circ$ 4. FLATNESS =0.007xWIDTH |
| UPTO 10.0mm - ± 0.23 | UPTO 50.0mm - ± 0.46 | UPTO 160.0mm - ± 1.02 | |
| UPTO 12.0mm - ± 0.25 | UPTO 60.0mm - ± 0.53 | UPTO 200.0mm - ± 1.14 | |
| UPTO 16.0mm - ± 0.28 | UPTO 80.0mm - ± 0.69 | UPTO 250.0mm - ± 1.40 | |
| UPTO 25.0mm - ± 0.30 | UPTO 100.0mm - ± 0.75 | UPTO 300.0mm - ± 1.65 | |



SYMBOL OF QUALITY
AN ISO 9001 COMPANY

JINDAL ALUMINIUM LTD.
BANGALORE-560073 (INDIA)

| | | |
|----------|----------|------------|
| | NAME | DATE |
| DRAWN | PARVESH | 03-09-2015 |
| CHECKED | | |
| APPROVED | S.S.GARG | 14-09-2015 |

- ALL DIMENSIONS ARE IN mm.
- ROUND OFF ALL SHARP CORNERS WITH 0.40 mm.
- TOLERANCES WILL BE AS PER IS:6477-1983 , UNLESS OTHERWISE SPECIFIED

| | |
|----------------------|---------|
| SCALE | 1:1 |
| AREA mm ² | 529.36 |
| PERIMETER mm. | 365.545 |
| WEIGHT kg/m | 1.429 |

| | |
|---------------------|--|
| PARTY'S NAME | OMKAR REALTORS & DEVELOPERS PVT LTD., MUMBAI |
| PARTY'S DRAWING No. | AS PER AUTOCAD DRAWING-AP-1607 |
| ALLOY & TEMPER | 6063 T6 |
| DESCRIPTION | WINDOW SECTION |

| | |
|-------------|-------------|
| DRAWING No. | SECTION No. |
| P-15137 | - |
| S4656 | S4656 |