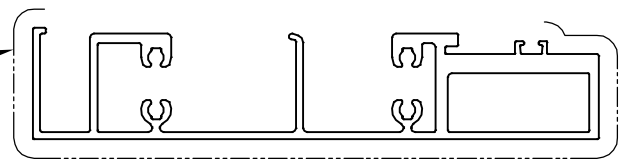


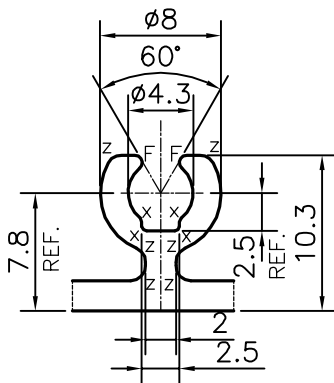
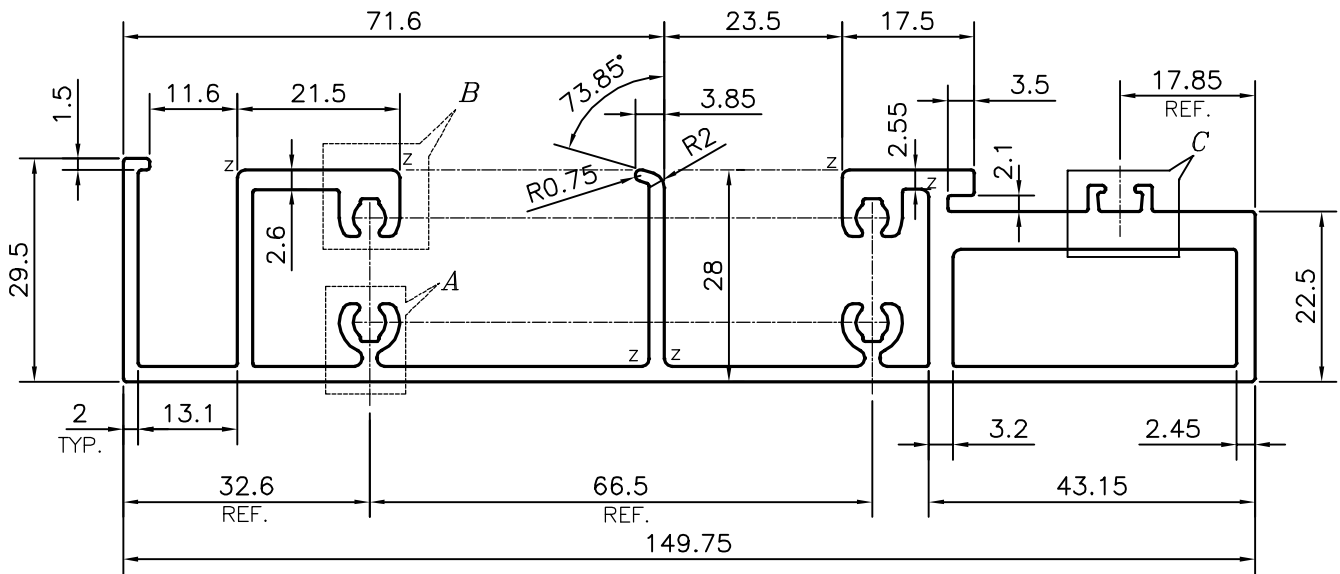
P-15140

S4659

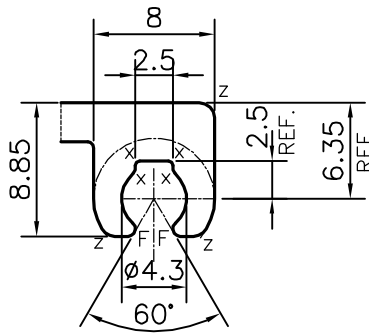
EXPOSED SURFACE



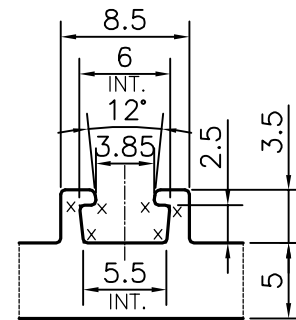
SCALE: - 0.5:1



DETAIL OF "A"
SCALE 2:1



DETAIL OF "B"
SCALE 2:1



DETAIL OF "C"
SCALE 2:1

AVERAGE THICKNESS HAS TO BE MAINTAINED WITH IN ±0.20 mm. OF THE NOMINAL VALUE.

Z = RADIUS 1 mm. (24 PLACES)
X = RADIUS 0.3 mm. (16 PLACES)
F = FULL RADIUS (8 PLACES)

TOLERANCES ON OVERALL WIDTHS & WIDTHS ACROSS FLATS OF BARS, & REGULAR SECTIONS

UPTO 6.40mm - ±0.20	UPTO 32.0mm - ±0.38	UPTO 120.0mm - ±0.85	1. STRAIGHTNESS=1.7mm/M 2. TWIST=1.7mm/M 3. ANGULARITY= ±2° 4. FLATNESS =0.007xWIDTH
UPTO 10.0mm - ±0.23	UPTO 50.0mm - ±0.46	UPTO 160.0mm - ±1.02	
UPTO 12.0mm - ±0.25	UPTO 60.0mm - ±0.53	UPTO 200.0mm - ±1.14	
UPTO 16.0mm - ±0.28	UPTO 80.0mm - ±0.69	UPTO 250.0mm - ±1.40	
UPTO 25.0mm - ±0.30	UPTO 100.0mm - ±0.75	UPTO 300.0mm - ±1.65	



SYMBOL OF QUALITY
AN ISO 9001 COMPANY

JINDAL ALUMINIUM LTD.
BANGALORE-560073 (INDIA)

	NAME	DATE
DRAWN	PARVESH	05-09-2015
CHECKED		
APPROVED	S.S.GARG	14-09-2015

- ALL DIMENSIONS ARE IN mm.
- ROUND OFF ALL SHARP CORNERS WITH 0.40 mm.
- TOLERANCES WILL BE AS PER IS:6477-1983 , UNLESS OTHERWISE SPECIFIED

SCALE	1:1
AREA mm ²	1008.035
PERIMETER mm.	707.541
WEIGHT kg/m	2.722

PARTY'S NAME	OMKAR REALTORS & DEVELOPERS PVT LTD., MUMBAI
PARTY'S DRAWING No.	AS PER AUTOCAD DRAWING-AP-1599 R1
ALLOY & TEMPER	6063 T6
DESCRIPTION	CURTAIN WALL SECTION

DRAWING No.	SECTION No.
P-15140	-
S4659	S4659