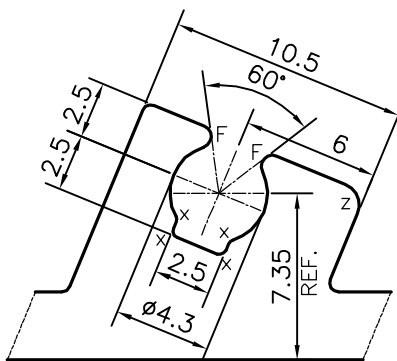
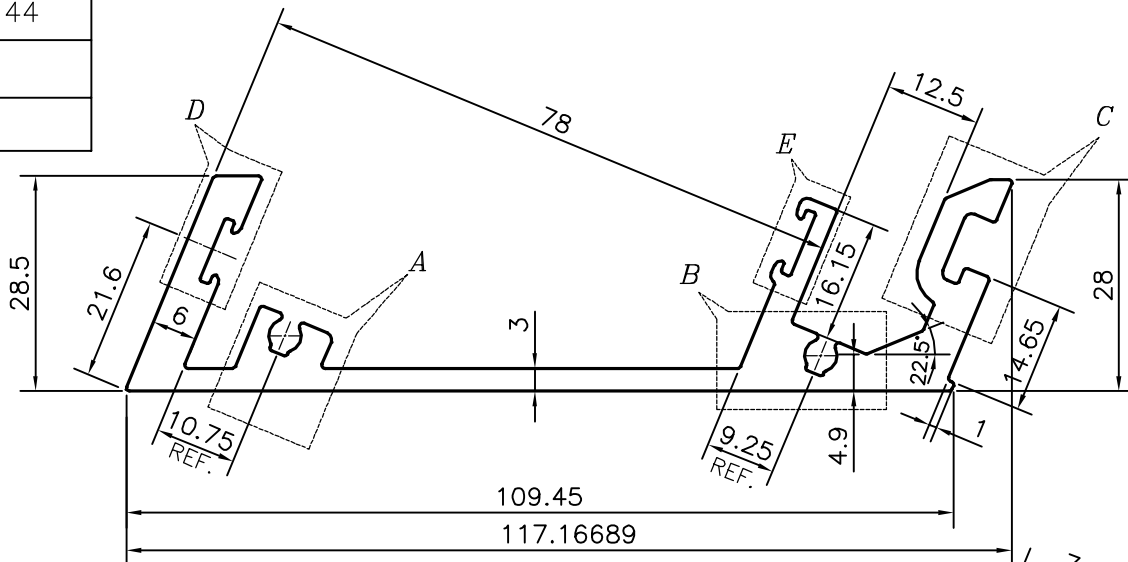
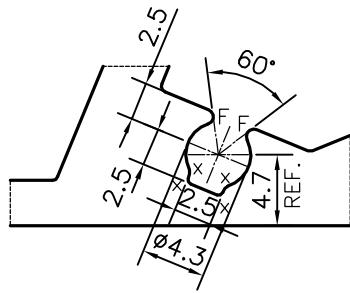


P-15144

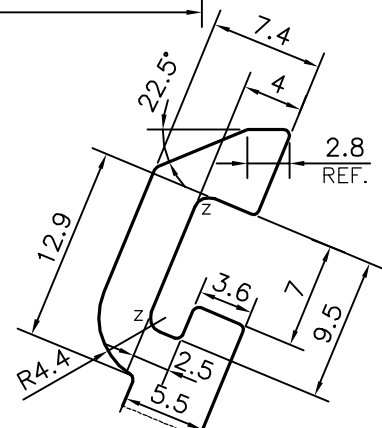
S4663



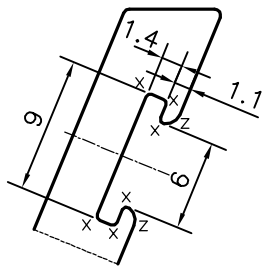
DETAIL OF "A"
SCALE 3:1



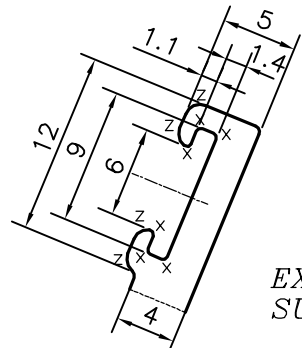
DETAIL OF "B"
SCALE 2:1



DETAIL OF "C"
SCALE 2:1



DETAIL OF "D"
SCALE 2:1



DETAIL OF "E"
SCALE 2:1

AVERAGE THICKNESS HAS TO BE MAINTAINED WITH IN ± 0.20 mm. OF THE NOMINAL VALUE.



EXPOSED SURFACE

- Z = RADIUS 1 mm. (9 PLACES)
- X = RADIUS 0.3 mm. (20 PLACES)
- F = FULL RADIUS (4 PLACES)

TOLERANCES ON OVERALL WIDTHS & WIDTHS ACROSS FLATS OF BARS, & REGULAR SECTIONS

UPTO 6.40mm - ± 0.20	UPTO 32.0mm - ± 0.38	UPTO 120.0mm - ± 0.85	1. STRAIGHTNESS=1.7mm/M 2. TWIST=1.7mm/M 3. ANGULARITY= $\pm 2^\circ$ 4. FLATNESS =0.007xWIDTH
UPTO 10.0mm - ± 0.23	UPTO 50.0mm - ± 0.46	UPTO 160.0mm - ± 1.02	
UPTO 12.0mm - ± 0.25	UPTO 60.0mm - ± 0.53	UPTO 200.0mm - ± 1.14	
UPTO 16.0mm - ± 0.28	UPTO 80.0mm - ± 0.69	UPTO 250.0mm - ± 1.40	
UPTO 25.0mm - ± 0.30	UPTO 100.0mm - ± 0.75	UPTO 300.0mm - ± 1.65	



SYMBOL OF QUALITY
AN ISO 9001 COMPANY

JINDAL ALUMINIUM LTD.
BANGALORE-560073 (INDIA)

	NAME	DATE
DRAWN	PARVESH	05-09-2015
CHECKED		
APPROVED	S.S.GARG	14-09-2015
SCALE		1:1
AREA mm ²		807.244
PERIMETER mm.		433.624
WEIGHT kg/m		2.180
DRAWING No.	SECTION No.	
P-15144	-	
S4663	S4663	

1. ALL DIMENSIONS ARE IN mm.
2. ROUND OFF ALL SHARP CORNERS WITH 0.40 mm.
3. TOLERANCES WILL BE AS PER IS:3965-1981, UNLESS OTHERWISE SPECIFIED

PARTY'S NAME	OMKAR REALTORS & DEVELOPERS PVT LTD., MUMBAI
PARTY'S DRAWING No.	AS PER AUTOCAD DRAWING-AP-1601
ALLOY & TEMPER	6063 T6
DESCRIPTION	CURTAIN WALL SECTION