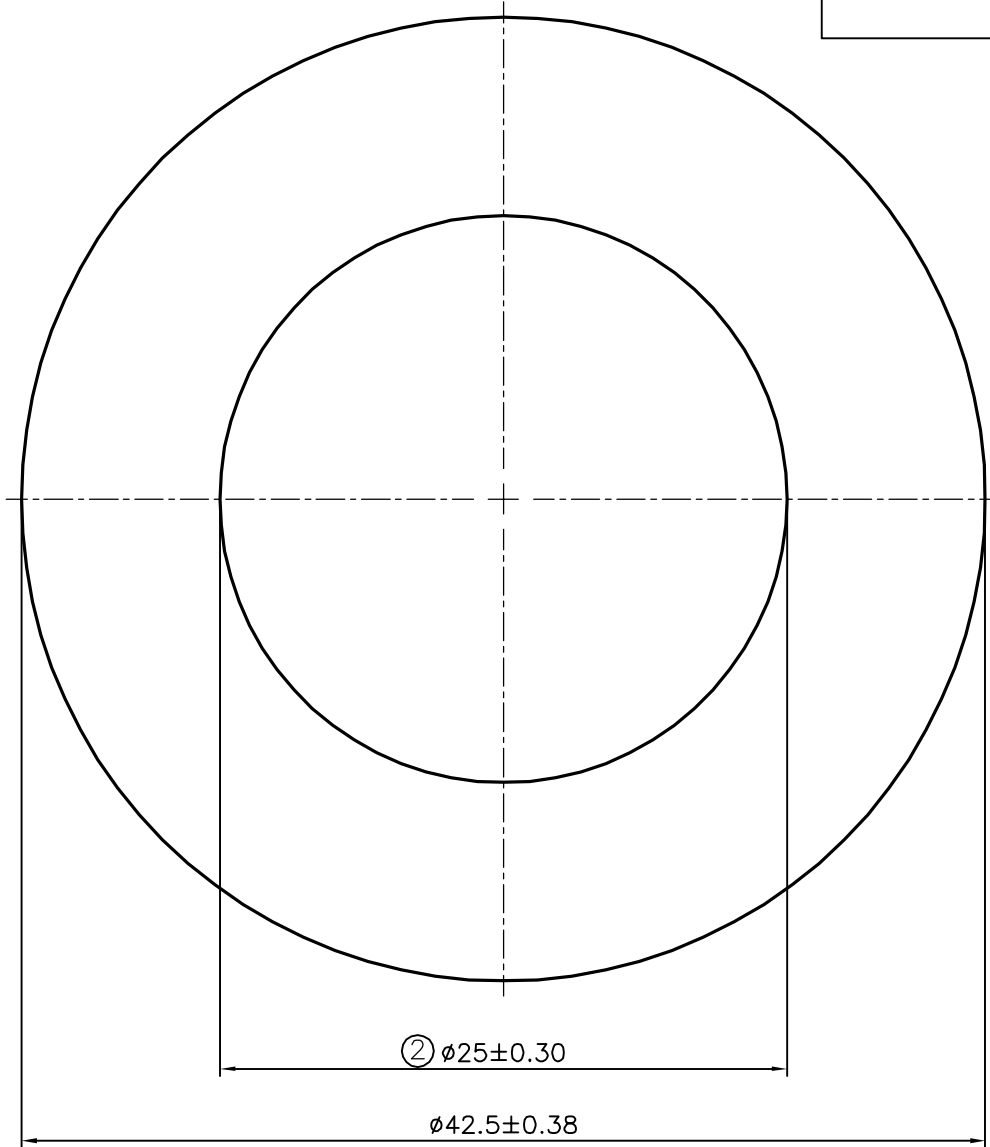
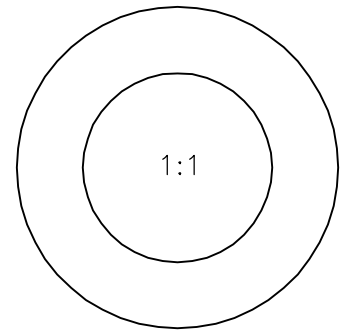


P-15124

S4682



**ISSUE-2**

DIMENSIONS CHANGED FROM  $\phi 25.8$  TO  $\phi 25$

WEIGHT ALSO CHANGED FROM 2.419 kg/m TO 2.505 kg/m



SYMBOL OF QUALITY  
AN ISO 9001 COMPANY

**JINDAL ALUMINIUM LTD.**  
**BANGALORE-560073 (INDIA)**

	NAME	DATE
DRAWN	J.P.KAUSHIK	07-11-2015
CHECKED		
APPROVED	S.S.GARG	12-11-2015
SCALE		3:1
AREA mm <sup>2</sup>		927.752
PERIMETER mm.		133.518
WEIGHT kg/m		2.505
DRAWING No.	SECTION No.	
P-15124	-	
S4682	S4682(ISSUE-2)	

1. ALL DIMENSIONS ARE IN mm.
2. ROUND OFF ALL SHARP CORNERS WITH 0.40 mm.
3. TOLERANCES WILL BE AS PER IS:2673-2002, UNLESS OTHERWISE SPECIFIED

PARTY'S NAME	ALPHA DESIGN TECHNOLOGIES PVT. LTD., BANGALORE
PARTY'S DRAWING No.	2000 5649 REV.No:-A.01
ALLOY & TEMPER	6082 T651
DESCRIPTION	ROUND TUBE